



HOME OF THE DEERHOLES

1931



The Woman's College
University of North Carolina

The LIBRARY



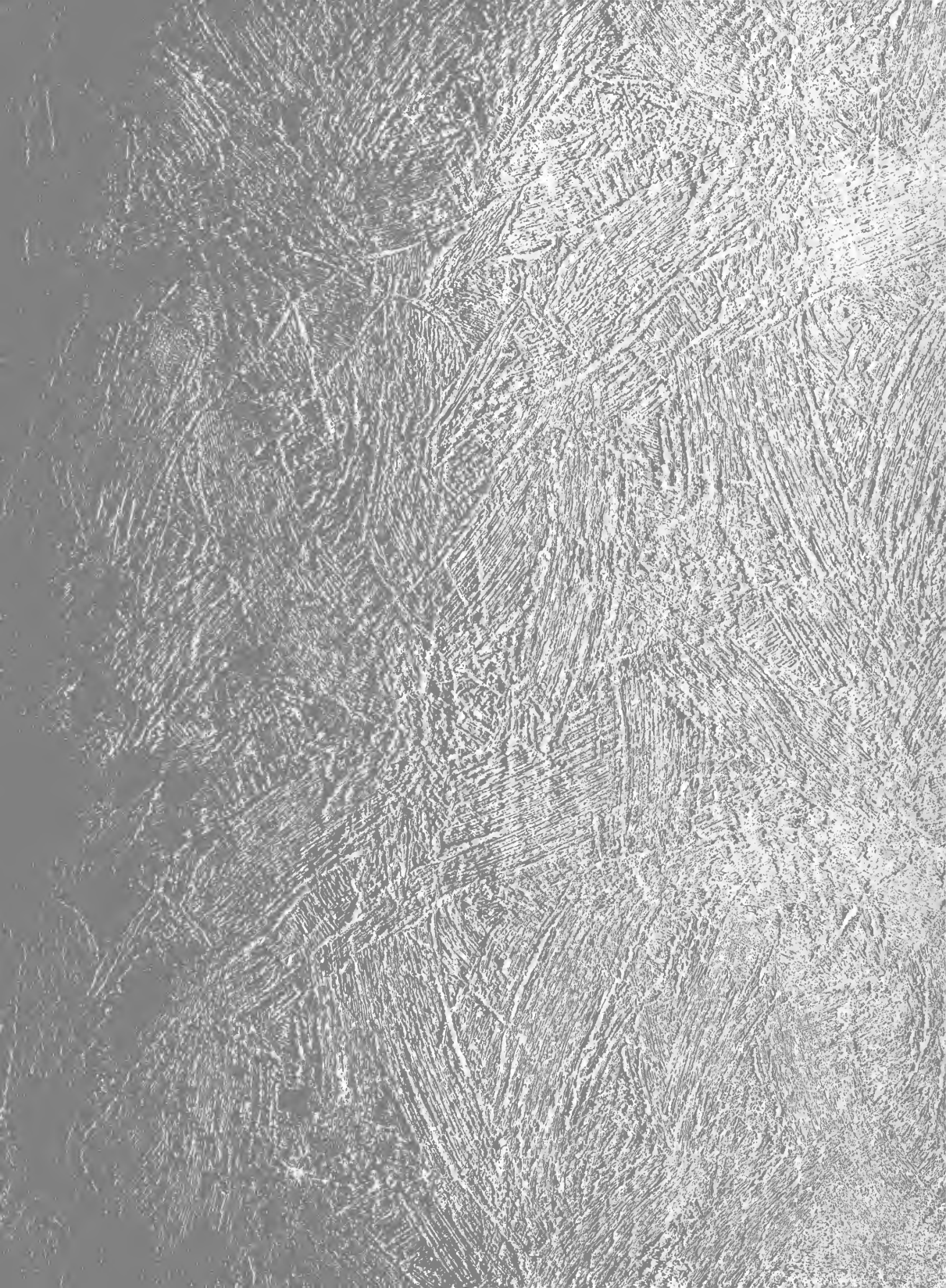
CO

N86 p


1937

c. 2

COLLEGE COLLECTION







Digitized by the Internet Archive
in 2010 with funding from
University of North Carolina at Chapel Hill

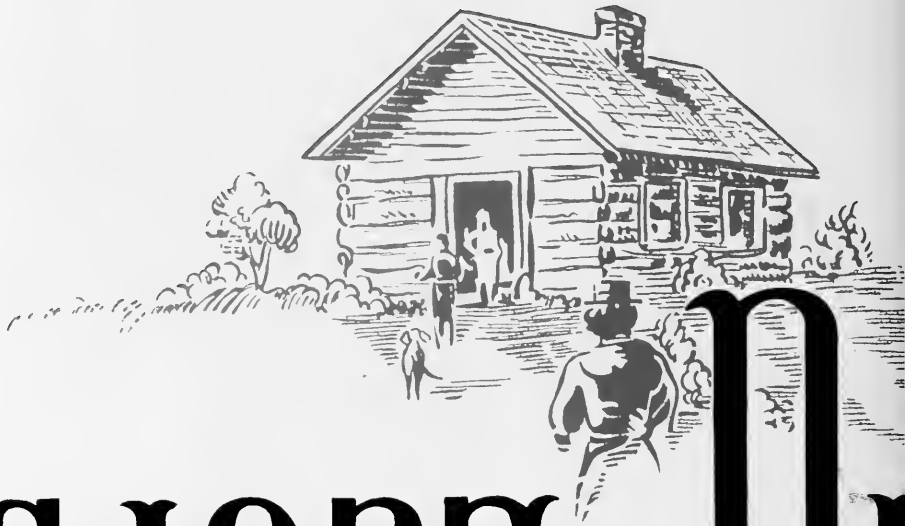
1937



THE *P*INE NEEDLES

JANET GRIFFIN • EDITOR
GWEN STEGALL • BUS. MGR.

SENIOR CLASS PUBLICATION OF WOMEN'S COLLEGE OF THE UNIVERSITY OF NORTH CAROLINA



THE 1937 P

GREENSBORO, N.C.

THE NEEDLES

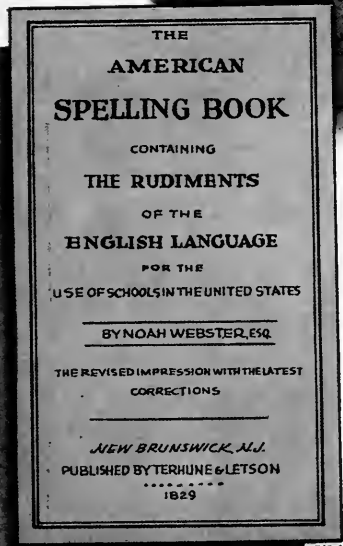
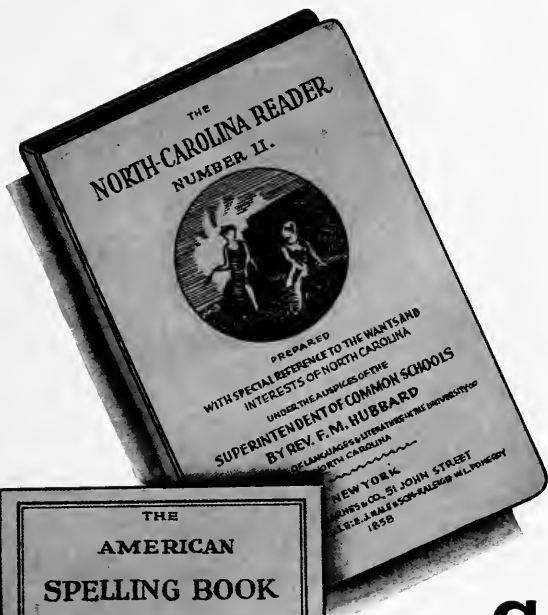


F OREWORD

In the 1937 PINE NEEDLES is set forth the story of a state's educational development—that unflinching standard for estimating advance or retreat along the line of human progress. We throw before you historic flashes of that history which we have gathered from musty documents, biographic tomes, and other treasured records. The presentation of our college year in the state's institution for women brings the story up to date.

Fashioned out of the industry and honest sweat, out of the love and patience, out of the genius and vision of those who have gone before, our present college year has emerged. Simple joys and serious endeavor are our heritage. To these yesterdays of our state and of our institution we look for the courage to go towards our tomorrows.

CC
N86p
1937
e. e



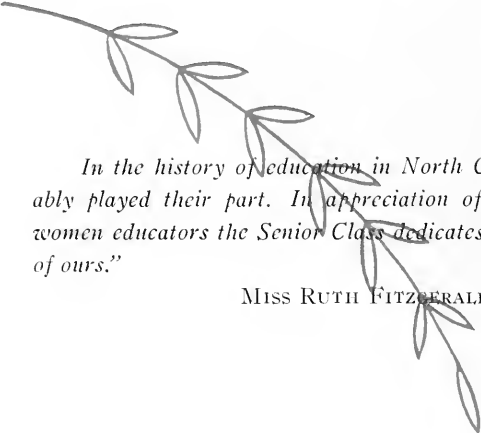
Contents

Book I COLLEGE
Book II CLASSES
Book III ORGANIZATIONS
Book IV ATHLETICS
Book V FEATURES





DEDICATION



In the history of education in North Carolina women have ably played their part. In appreciation of the contribution of women educators the Senior Class dedicates this Annual to "one of ours."

MISS RUTH FITZGERALD



- 1705—*The Society for Propagation of the Gospel in Foreign Parts sends Charles Griffin to Pasquotank County. Mr. Griffin was the first professional teacher in North Carolina.*
- 1760—*The first academics are established at Wilmington and at Crossfield, Mecklenburg County, near the present site of Davidson College.*
- 1770—*Queen's College is founded under the auspices of the Presbyterians. It is twice chartered by the Legislature and twice repealed by royal proclamation. It would seem that no compliments to his Queen could render Whigs in politics and Presbyterians in religion acceptable to George III. Queen's flourished, however, under the name of Liberty Hall Academy and was granted a Charter by the newly independent state legislature.*
- 1772—*The Moravians of Salem started a school for little girls which ultimately developed into Salem College.*

The teacher of today often fights economic slavery. There was a time when his bonds were even more tangible. We are told that in the earliest days of the colony, when a ship arrived with either redemptioners of convicts, school-masters were as regularly advertised for sale as were weavers, tailors, or members of any other trade. There was little difference except, perhaps, that the former did not usually bring so good a price as the latter.

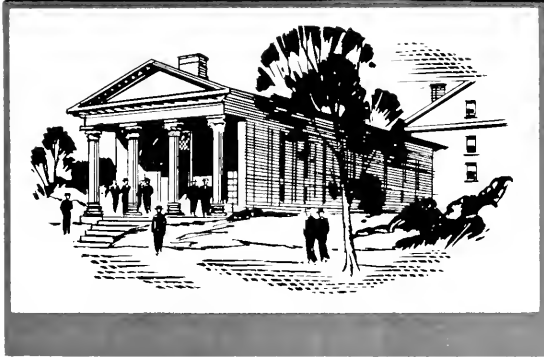
Old records yield the following advertisements concerning two indentured school-masters. The first one had run away; the second had carried the children as far as he was qualified to teach them.

"Ran away: A servant man ***** who had followed the profession of school-master. Much given to drink and gambling."

"To be sold: A school-master, an indentured servant who has got two years to serve. N.B. He is sold through no fault, any more than we are done with him. He can learn book-keeping and is an excellent scholar."

Book One

STATE NORMAL AND
INDUSTRIAL COLLEGE



UNIVERSITY OF NORTH CAROLINA

THE COLLEGE

In Memoriam

MARTHA ELIZABETH WINFIELD
(June 10, 1873—December 13, 1936)

Member of the Class of 1906
Professor of English 1906-1936

Distinguished teacher and Shakespeare scholar.

*"Her place is secure among those early Titans who have erected
the structure and moulded the spirit of this institution."*



ADMINISTRATION



GOVERNOR CLYDE HOEY
Chairman of the Board of Trustees



HOEY

EXECUTIVE COMMITTEE OF THE TRUSTEES

HENRY MAUGER LONDON, *ex-officio*, Secretary

1938: CHARLES WHEDBEE, WILLIAM D. FAUCETTE, LESLIE WEIL.

1940: JOHN SPRUNT HILL, WALTER MURPHY, JOHN J. PARKER.

1942: MRS. LAURA WEILL CONE, MISS EASDALE SHAW, HAYWOOD PARKER.

FRANK PORTER GRAHAM, Ph.D.
President of the University of North Carolina

WALTER CLINTON JACKSON, Ph.D.
Dean of Administration

MISS HARRIET W. ELLIOTT
Dean of Women



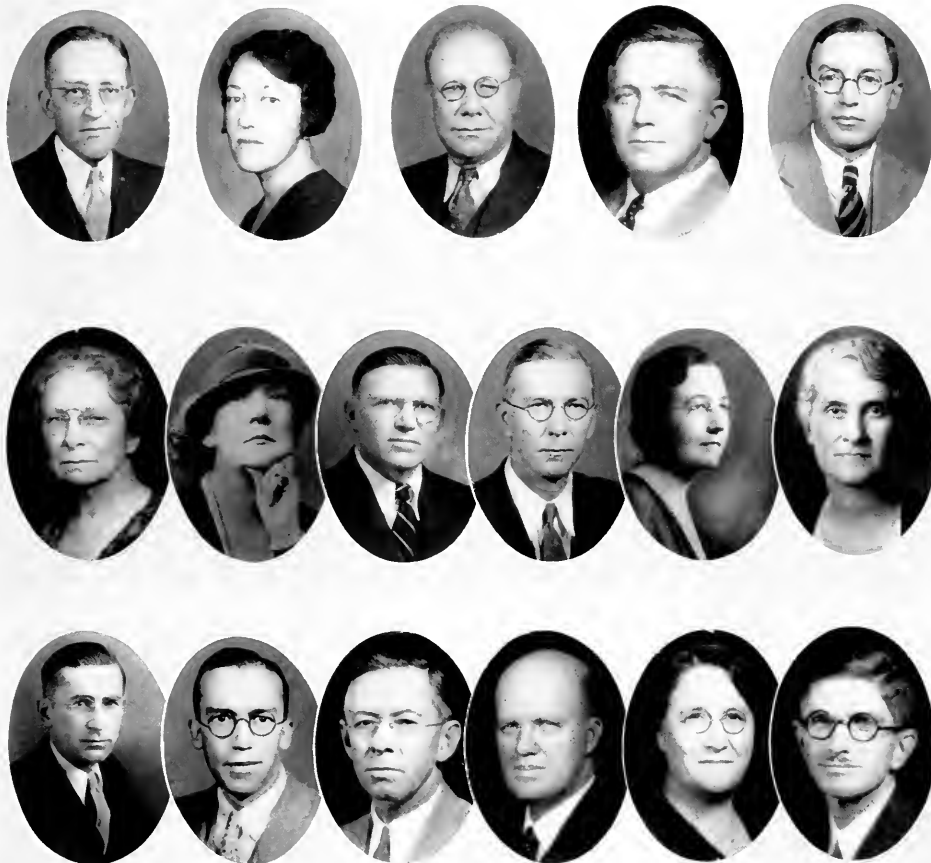
GRAHAM



JACKSON



ELLIOTT



HEADS OF DEPARTMENTS

JOHN PAUL GIVLER
Ph.B., M.A.
Professor of Biology
FLORENCE L. SCHAEFFER
B.A., M.A.
Professor of Chemistry
JOHN H. COOK
M.A., Ph.D.
Professor of Education
B. FRANK KYKER
B.A., B.S., M.A.
Professor of Secretarial Science
ALBERT S. KEISTER
M.A., Ph.D.
Professor of Economics

ANNA M. GOVE
M.D.
Professor of Hygiene and Physician
MARY CHANNING COLEMAN
B.S.
Professor of Physical Education
BENJAMIN B. KENDRICK
M.A., Ph.D.
Professor of History
GLENN R. JOHNSON
B.A., M.A.
Professor of Sociology
MARGARET M. EDWARDS
B.S., M.A.
Professor of Home Economics
HELEN BARTON
M.A., Ph.D.
Professor of Mathematics

H. HUGH ALTVATER
Ph.D.
Professor of Music
CALVIN N. WARFIELD
M.A., Ph.D.
Professor of Physics
JAMES ALBERT HIGHSMITH
M.A., Ph.D.
Professor of Psychology
WINFIELD S. BARNEY
M.A., Ph.D.
Professor of Romance Languages
CAROLINE SCHOCH
Ph.B., M.A.
Professor of German
GREGORY D. IVY
B.S., M.A.
Associate Professor of Art

FACULTY AND OFFICERS

1936-37

- FRANK PORTER GRAHAM, M.A., LL.D., D.C.L., D.Litt.
President
- WALTER CLINTON JACKSON, B.S., LL.D.
Dean of Administration
- ALICE K. ABBOTT, B.A., M.A.
Assistant Professor of Spanish
- LOUISE BREVARD ALEXANDER, B.A.
Assistant Professor of Political Science
- AMELIA C. ALTVATER, B.A.
Instructor in German
- H. HUGH ALTVATER, B.A., M.Mus.
Professor of Music and Dean of the School of Music
- MARY RUTH ANGLE
Circulation Department, Library
- HALLIE ANTHONY
Clerk
- ALEX MATTHEWS ARNETT, M.A., Ph.D.
Professor of History
- KEY L. BARKLEY, M.A., Ph.D.
Associate Professor of Psychology
- WINFIELD S. BARNEY, M.A., Ph.D.
Professor of Romance Languages
- EVA EUDORA BARROW, B.A., M.S.
Associate Professor of Chemistry
- HELEN BARTON, M.A., Ph.D.
Professor of Mathematics
- NEVA H. BENDIX, B.S.
Instructor in Commercial Department
- ESTELLE BOYD
Supervisor of Dormitories
- WADE R. BROWN, Mus.D.
Professor of Music
- MARY ELIZABETH BRUMMITT, B.A.
Assistant in Biology
- MAY DULANEY BUSH, B.A., M.A.
Instructor in English
- CLARA BOOTH BYRD, B.A.
Alumnae Secretary
- VICTORIA CARLSON, M.A., Ph.D.
Associate Professor of Hygiene
- ANNE FULTON CARTER, B.A.
Student Counselor
- DOROTHY LEE CLEMENT, B.S.
Instructor in Music
- OLIVER PERRY CLUTTS, B.S., M.A.
Associate Professor of Education
- LAURA H. COIT
Secretary of the College
- INEZ COLDWELL, B.A.
Associate Professor of Biology
- MARY CHANNING COLEMAN, B.S.
Professor of Physical Education
- RUTH M. COLLINS, B.A., M.D.
Director of the Department of Health and Physician
- ELIZABETH J. COOK, B.A., M.A.
Instructor in Chemistry
- JOHN H. COOK, M.A., Ph.D.
Professor of Education
- HOPE COOLIDGE, B.S., M.S.
Dietitian
- AGNES N. COXE, B.S., M.A.
Instructor in Home Economics
- BENNIE LEE CRAIG, B.A.
Assistant in Psychology
- CHARLES CRITTENDEN, B.A., M.A.
Assistant Professor of Geography
- HELEN FRANCES CUTTING, B.A., M.A.
Assistant Professor of Spanish
- DOROTHY DAVIS, B.A., M.A.
Instructor in Physical Education
- MARIE B. DENNEEN, B.A., M.A.
Associate Professor of Education
- BESSIE DOUB
Assistant Dietitian
- BERNICE EVELYN DRAPER, B.A., M.A.
Associate Professor of History
- ALICE DUNLAP, B.A.
Student Counselor
- J. ARTHUR DUNN, B.A., M.A.
Professor of English
- FLORA WHITE EDWARDS, B.S., M.S.
Assistant Professor of Home Economics
- MARGARET MESSENGER EDWARDS, B.S., M.A.
Professor of Home Economics
- HARRIET WISEMAN ELLIOTT, B.A., M.A.
Professor of Political Science and Dean of Women
- MARY EDWARDS ELLIS
Instructor in Commercial Department
- VIRGINIA C. FARINHOLT, M.A., Ph.D.
Assistant Professor in Romance Languages
- MARY LOIS FERRELL
Associate Professor Piano
- MARY FITZGERALD, B.A.
Assistant Professor of Education
- RUTH FITZGERALD, B.S., M.A.
Professor of Education
- ALDACE FITZWATER, B.S., M.A.
Assistant Professor of Physical Education
- MARGARET FLINTOM, B.A., M.A.
Instructor in Education
- EDNA A. FORNEY, B.A.
Assistant Treasurer
- E. J. FORNEY
Treasurer
- FRANCES FOSTER
Clerk
- JULIUS I. FOUST, Ph.B., LL.D.
President Emeritus
- HENRY H. FUCHS, B.A., B.Mus.
Professor of Music Theory
- ANNIE BEAM FUNDERBURK, B.A., M.A.
Instructor in Romance Languages and Student Counselor
- JOHN PAUL GIVLER, Ph.B., M.A.
Professor of Biology
- MILDRED RUTHERFORD GOULD, B.S., M.A.
Associate Professor of English
- ANNA M. GOVE, M.D.
Professor of Hygiene and Physician
- JONE H. GROGAN, B.A., M.A.
Student Counselor
- MAGNHILDE GULLANDER, B.A., M.A.
Associate Professor of History
- RUTH GUNTER, B.A., M.A.
Assistant Professor of Education
- ALONZA C. HALL, B.A., M.A.
Professor of English
- EARL H. HALL, B.S., M.S.
Professor of Botany
- EDITH HARBOUR, B.A.
Secretary to the Dean of Administration
- RENE HARDRE, C.E.N., C.A.P.
Associate Professor of Romance Languages
- MARY HARRELL, B.A.
Instructor in Commercial Department
- MILDRED PEARL HARRIS, B.A., M.A.
Assistant Professor of Hygiene
- EDITH HARWOOD, B.L.
Clerk in Registrar's Office
- MARTHA ELIZABETH HATHAWAY, B.S.
Student Counselor
- KATHLEEN PETTIT HAWKINS
Clerk
- MADELINE HEFFNER, B.A.
Assistant in Biology
- JOSEPHINE HEGE, B.A.
Instructor in History and Student Counselor
- SARA HENRY, B.A.
Clerk
- JAMES ALBERT HIGHSMITH, M.A., Ph.D.
Professor of Psychology
- BIRDIE HELEN HOLLOWAY, B.S., M.S.
Instructor in Music
- MARJORIE HOOD, B.A.
Head of Circulation Department, Library
- MALCOLM K. HOOKE, B.A., D. de l'Univ.
Professor of Romance Languages
- ANNIE H. HUGHES
Clerk
- CLYDE W. HUMPHREY, B.A., M.A.
Instructor in Secretarial Science
- EUGENIA McIVER HUNTER, B.A.
Instructor in Kindergarten
- ETHEL HASKIN HUNTER
Student Counselor
- LEONARD B. HURLEY, M.A., Ph.D.
Professor of English
- MINNIE MIDDLETON HUSSEY, B.A.
Readers' Adviser, Library
- HERBERT RICHARD HAZELMAN, B.A.
Instructor in Music
- HELEN INGRAHAM, B.S., M.S.
Associate Professor of Biology
- GREGORY D. IYV, B.S., M.A.
Associate Professor of Art
- MINNIE L. JAMISON
Counselor
- CHARLTON C. JERNIGAN, M.A., Ph.D.
Assistant Professor of Classical Civilization
- BETTY BROWN JESTER, B.A.
Manager of Book Store and Post Office
- CLARENCE D. JOHNS, B.A., M.A.
Professor of History
- GLENN R. JOHNSON, B.A., M.A.
Professor of Sociology

1937 PINE NEEDLES

- GEORGE M. JOYCE, B.S., M.S.
Assistant Professor, Commercial Department
- ALBERT S. KEISTER, M.A., Ph.D.
Professor of Economics
- ELIZABETH KELLAM
Secretary of Class Chairmen
- BENJAMIN B. KENDRICK, M.A., Ph.D.
Professor of History
- A. P. KEPHART, M.A., Ph.D.
Professor of Educational Practice
- HERBERT KIMMEL, Ph.M., Ph.D.
Associate Professor of Education
- CHARLOTTE KOHLER, M.A., Ph.D.
Instructor in English
- ANNA M. KREIMEIER, Ph.B.
Assistant Professor of Education
- HELEN KRUG, B.S., M.A.
Assistant Professor of Education
- B. FRANK KYRER, B.A., B.S., M.A.
Professor of Secretarial Science
- GERALDINE LADD, B.A., M.A.
Instructor in Education
- JESSIE C. LAIRD, B.A., M.A.
Associate Professor of Romance Languages
- BETTY AIKEN LAND, B.A., M.A.
Assistant Professor of Education
- VERA LARGENT, B.A., M.A.
Assistant Professor of History
- AUGUSTINE LAROCHELLE, B.A., M.A.
Associate Professor of Spanish
- MAY LATTIMORE
Clerk and Student Counselor
- MARY BETTY LEE
Clerk
- EDYTHE ORRELL LESLIE
Clerk
- EUNICE ANN LLOYD, B.A., M.A.
Assistant Professor of Education
- LILA BELLE LOVE, M.S.
Associate Professor of Bacteriology
- LILLIAN MEBANE LOVINGS
Clerk
- GUY R. LYLE, B.A., B.S., M.S.
Librarian
- MIRIAM MACFADYEN, G.S., M.A.
Assistant Professor of Education
- JESSIE R. MCLEAN, R.N.
Nurse
- EVELYN MARTIN, B.A.
Student Counselor
- WILLIAM WOODROW MARTIN, Ph.B., M.A.
Professor of Psychology
- ETHEL L. MARTUS, B.A., M.S.
Assistant Professor of Physical Education
- HARRIETT MEHAFFIE, Ph.B.
Assistant Professor of Education
- EVA COX MELVIN, B.L.
Clerk
- META HELENA MILLER, M.A., Ph.D.
Associate Professor of Romance Languages
- ALLEINE RICHARD MINOR, B.S.
Associate Professor of Piano
- MARY TAYLOR MOORE
Registrar
- GRACE VAN DYKE MORE, B.Mus., M.S.
Associate Professor of Public School Music
- KATHERINE MOSER, B.A., M.A.
Instructor in History
- ELBERT R. MOSER, JR., M.S., Ph.D.
Instructor in English
- MARIA S. NAPLES, M.D.
Assistant Physician
- HARRIET ALICE NAUMANN, B.A., M.S.
Assistant Professor of Home Economics
- MILDRED PENDLETON NEWTON, B.A.
Secretary to the Registrar
- JAMES W. PAINTER, B.A., M.A.
Associate Professor of English
- HERBERT W. PARK
Assistant in Physical Education, Training School
- MARY WELSH PARKER, B.A.
Assistant in Chemistry and Student Counselor
- JEAN SELLOX PECK, B.A.
Instructor in Chemistry
- MOLLIE ANNE PETERSON, Ph.B., M.A.
Associate Professor of Art
- MARY M. PETTY, B.S.
Professor of Chemistry
- EUGENE E. PFAFF, M.A., Ph.D.
Instructor in History
- KATHLEEN T. PFAFF, B.A.
Instructor in History
- CHARLES WILEY PHILLIPS, B.A., M.A.
Director of Public Relations
- HELEN LEE PICHARD
Secretary to the Assistant Comptroller
- VIVA M. PLAYFOOT, B.S., M.A.
Associate Professor of Home Economics
- DOWNING EUBANK PROCTOR, Ph.B., M.A.
Instructor in Sociology
- ANNA REGER, B.A., B.S.
Assistant Professor of Education and Librarian
Training School
- LAWRENCE S. RITCHIE, M.A., Ph.D.
Instructor in Biology
- BESS NAYLOR ROAS, B.S., M.A.
Assistant Professor of Home Economics
- KURT EDWARD ROSINGER, M.A., Ph.D.
Assistant Professor of Philosophy
- ABIGAIL E. ROWLEY, B.A., M.A.
Associate Professor of English
- E. ELIZABETH SAMPSON, B.A.
Head Cataloguer, Library
- FLORENCE LOUISE SCHAEFFER, B.A., M.A.
Professor of Chemistry
- EDYTHE D. SCHNEIDER, B.M.
Instructor in Music
- CAROLINE B. SCHOCH, Ph.B., M.A.
Professor of German
- SARAH GARDNER SEAGLE, B.A.
Order Assistant and Secretary to the Librarian
- ARCHIE D. SHAFTESBURY, B.A., Ph.D.
Associate Professor of Zoology
- ANNE SHAMBURGER
Instructor in Hygiene
- KATHERINE SHERRILL, B.A.
Student Counselor and Secretary to
Dean of Women
- LYDA GORDON SHIVERS, M.A., Ph.D.
Assistant Professor of Sociology
- CHARLES J. SHOHAN, B.A., M.A.
Instructor in Economics
- EMEVA PAUL SINGLETARY, B.S.
Instructor in Charge of Nursery School
- ROBERT M. SKELTON, B.A., M.A.
Instructor in Art
- J. A. SMITH, B.Ed., M.S.
Associate Professor of Education
- WILLIAM C. SMITH, Ph.B., L.H.D.
Professor of English Language and Literature
- SUE KYLE SOUTHWICK
Instructor in Music
- ALMA M. SPARGER, B.S., M.A.
Assistant Professor of Art
- ETTA R. SPIER, B.A., M.A.
Professor of Education
- PATTY SPRUILL, B.A.
Assistant Professor of Secretarial Science
- CORA JANE STANON, R.N.
Nurse
- FRANCES HONNET STERN, B.A.
Assistant in Dramatics
- MADLINE BLAKEY STREET, B.S., M.A.
Assistant Professor of Home Economics
- CORNELIA STRONG, B.A., M.A.
Professor of Mathematics
- FRANCES SUMMERELL, B.A., M.A.
Student Counselor
- JANE SUMMERELL, B.A., M.A.
Associate Professor of English
- BLANCHE TANSIL, B.S., M.A.
Associate Professor of Institutional Management
- KATHERINE TAYLOR, B.A., M.A.
Instructor in Romance Languages
and Student Counselor
- WILLIAM RAYMOND TAYLOR, B.A., M.A.
Professor of English
- CLAUDE EDWARD TEAGUE, B.A.
Assistant Comptroller
- MARY ALICE TENNENT, B.A.
Assistant Registrar
- ALBERT FREDERICK THIEL, M.A., Ph.D.
Associate Professor of Botany
- GEORGE M. THOMPSON, M.Mus.
Professor of Organ
- JOHN A. TIEDEMAN, M.S., Ph.D.
Assistant Professor of Physics
- NETTIE S. TILLEY, B.A., M.A.
Associate Professor of English
- HOPE TISDALE, B.A., M.A.
Assistant Professor of Physical Education
- VIRGINIA TRUMPER
In Charge of Periodicals, Library
- MARY TYLER, B.A.
Assistant in Chemistry
- GEORGE A. UNDERWOOD, M.A., Ph.D.
Professor of Romance Languages
- EDITH VAIL, B.S.
Instructor in Physical Education
- CALVIN N. WARFIELD, M.A., Ph.D.
Professor of Physics
- EMILY HOLMES WATRINS, B.A., M.A.
Assistant Professor of Mathematics
- ELIZABETH McJIVER WEATHERSPOON
Associate Professor of Art
- CHRISTINE WHITE, B.S.
Instructor in Physical Education
- TREVA WILKERSON, B.A.
Circulation Department, Library
- MAUDE WILLIAMS, B.A., M.S.
Associate Professor of Physiology
- SUE VERNON WILLIAMS, B.A., M.A.
Reference Librarian
- GEORGE P. WILSON, B.A., M.A.
Associate Professor of English
- *MARTHA ELIZABETH WINFIELD, B.S., M.A.
Professor of English
- RUTH WORLEY, B.A.
Assistant Cataloguer, Library
- MARY EDITH YORK, B.S., M.S.
Instructor in Home Economics

* Deceased.

STUDENT COUNSELORS

MISS KATHERINE SHERRILL, B.A.
Cotton Hall

MISS JOSEPHINE HEGE, B.A.
Shore Hall

MRS. J. S. HUNTER
Gray Hall

MISS VIRGINIA FARINHOLT, Ph.D.
Bailey Hall



SHERRILL
HUNTER

HEGE
FARINHOLT

MISS ELIZABETH HATHAWAY
Kirkland Hall

MISS MARY WELSH PARKER
Woman's Hall

MRS. ANNE CARTER
Spencer Hall

MRS. ANNIE BEAM FUNDERBURKE, B.A., M.A.
Mary Foust Hall

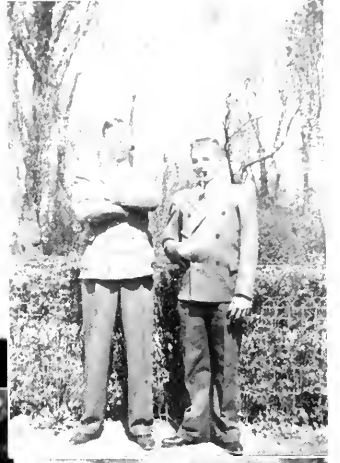
MISS IONE GROGAN, B.A., M.A.
East Hall

MISS KATHERINE TAYLOR, B.A., M.A.
New Guilford Hall



HATHAWAY
CARTER

PARKER
FUNDERBURKE




- 1776 *Constitutional provisions for legislative establishment of schools and for the first state university in the nation are adopted.*
- 1825 *The State Literary Fund in embryo form passes the Assembly vote. Comprised of the interest on certain state bonds, money from liquor licenses, criminal fines, and the like, and special appropriations, it soon amounts to two million dollars. This fund enables the modest beginning of public school support.*
- 1837 *The first Common School Law, dividing the counties into school districts, is drawn by W. W. Cherry.*

The bill creating the University of North Carolina was passed in the old Governor's Palace at New Bern. The house had been built at the request of Governor Tyrone in 1770 and is said to have cost about \$80,000.

After the state capital was moved from New Bern, one of the wings of the palace was used for dancing. In 1795 the New Bern Academy burned, and the Legislature granted the principal, Rev. Thomas P. Irvine, the use of the building for school purposes.

Mr. Irvine kept wood and hay in the cellar of the palace and lived in the upper part. In 1798 a negro woman servant of Mr. Irvine went to look for eggs in the hay, carrying a light-wood torch. The hay caught from a spark, and the palace was burned to the ground.



BOOK

Two



NEW CONSOLIDATED SCHOOL
BUILDING, DURHAM COUNTY



MANGUM TOWNSHIP, DURHAM
COUNTY LOG SCHOOL

CLASSES



SENIORS

SENIOR CLASS

OFFICERS

JOSEPHINE BUTLER
President of Senior Class

BETTY WINSPEAR
Vice-President

MILLIE YUNKER
Secretary

AILEEN PENDLETON
Treasurer



BUTLER



MILLER



SHIFFMAN

META HELENA MILLER, Ph.D.
Chairman of Senior Class

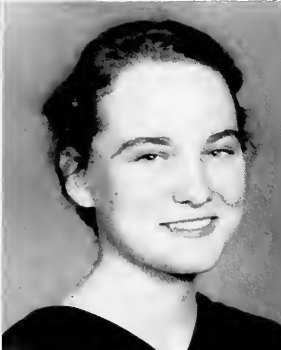
BETTY MARIE SHIFFMAN
Mascot of Senior Class



WINSPEAR



YUNKER



PENDLETON

1937 PINE NEEDLES



ABERNETHY
BARRIER

ANDREWS
BELL

ASHLEY
BELTON

BARNHARDT
BOATMAN

LAURA ABERNETHY, Hickory, N. C., *A.B.*; Cornelian Marshal (3); Junior Prom Chairman; Assistant Junior Shop Manager; Big Sister Chairman (2); Dolphin (1, 2, 3), Secretary (4); Swimming Varsity (1, 2, 3); Soccer Varsity (2, 3); Sociology Club (3, 4); International Relations Club (4); House President (4); Playlikers (3, 4); Tennis Varsity (3); French Club (1, 2).

MARTHA ANDREWS, Kinston, N. C., *A.B. English*; Dormitory Social Chairman (4); *Carolinian* (4); *Aletheian*; Education Club (3, 4).

MARGUERITE BARRIER, Jonas Ridge, N. C., *A.B.*; *Adelphian*; Chemistry Club (3, 4).

GRACE BELL, Murphy, N. C., *A.B.*; *Adelphian*; Freshman Commission; Speaker's Club (1); Clogging Club (2, 3); Square Dance Club (3); Chairman of Junior Advisors (3); Honor Roll (1, 2, 3); House President (4); Phi Beta Kappa (3, 4); Legislature; Education Club (4).

ELIZABETH ASHLEY, Westfield, Mass., *A.B.*; *Dikean*; *Carolinian* Staff (1); Chapel Committee (2); Daisy Chain (2); St. Mary's House Vestry (1, 2); German Club (1, 2); Education Club (3, 4); House Social Chairman (3); Marshal (4); Playlikers (1, 2, 3, 4), Cabinet (3), President (4); Masqueraders (3, 4); Cast of Commencement Play (2, 3).

MARGUERITE BARNHARDT, Rockwell, N. C., *B.S. Music*; *Dikean*; Catawba College; Choir (2, 3, 4); Madrigal Club (2, 3, 4), Secretary (3); Education Club (4).

ANNE BELTON, Winston-Salem, N. C., *B.S.S.A.*; *Cornelian*; Honor Roll (2); Playlikers; Education Club; *PINE NEEDLES* (4).

MARGARET BOATMAN, Greensboro, N. C.

1937 PINE NEEDLES



BOGER
BOST

BOHANNON
BOYD

BOLICK
BRAGG

BONKEMEYER
BRECKINRIDGE

CAMILLE BOGER, Morganton, N. C., *A.B.*; Adelpian; Y. W. C. A. (3, 4); Mitchell College.

HELEN BOLICK, Polkton, N. C., *A.B.*; Cornelian.

REBECCA BOHANNON, Virgilina, Va., *A.B.*; Aletheian; Averett College; Education Club; Y. W. C. A.

GERALDINE BONKEMEYER, Greensboro, N. C.

FANNY BOST, Newton, N. C., *A.B. History*; Aletheian; Baptist Student Union (1, 2, 3, 4), Council (2, 3); Y. W. C. A. (1, 2, 3, 4), Cabinet (3); Student Volunteer (1, 2, 3, 4), President (3); Education Club (4).

MATHILDA BRAGG, Pinetown, N. C., *B.S.S.A.*; Cornelian; Y. W. C. A. (3, 4); St. Mary's (1, 2, 3, 4); Education Club (4); Soccer; Orchesis (4).

WILLIE BOYD, Ayden, N. C., *A.B. Art*; Dikean; St. Mary's Vestry, Chairman (2, 3, 4), Vice-President (3, 4); Art Club (3, 4); Education Club (4).

MARY BRECKINRIDGE, Summersville, W. Va., *B.S.S.A.*; Dikean; French Club (1, 2); Chairman Senior Dance; House Vice-President (2).

1937 PINE NEEDLES

VIRGINIA BRITTMAN, Asheboro, N. C., *B.S.S.A.*; Dikean; Education Club (4); Square Dance Club (3); French Club (2); Society Contact Member (2).

MARGARET BUNN, Henderson, N. C., *A.B.*; Adelpian; Choir; Vesper Choir; Education Club; Treasurer of B.S.U.

ESTHER MAY BROWN, Gatesville, N. C., *A.B.*; Education; Cornelian; Louisburg College; Education Club.

LOUISE BURNETTE, Greensboro, N. C., *B.S.H.E.*; Cornelian; Home Economics Club (1, 2, 3, 4); Chemistry Club (2).

MARJORIE BURGESS, Old Trap, N. C., *A.B.*; Adelpian; Louisburg College; Education Club (4); Botany Club (4).

JULIA BUTLER, Savannah, Ga., *A.B.*; Dikean; Honor Roll (3); Finance Board (3, 4); Orchesis (4); Dolphin (1, 2, 3, 4); Dikean Treasurer (3); Jacket Committee (2).

JOSEPHINE BUTLER, Savannah, Ga., *A.B.*; Dikean; French Club (1, 2, 3, 4); Dolphin (1, 2, 3, 4); A.A. Cabinet (3, 4); Honor Roll (2, 3); Class President (4); Marshal (3); Legislature (2).

RUEL CAPEL, Greensboro, N. C., *B.S.S.A.*; Adelpian; *Carolinian* (1, 2, 3); *Coraddi* Advertising Manager (4); Math Club (1); German Club (1, 2); Honor Roll (2); Playlikers (4).



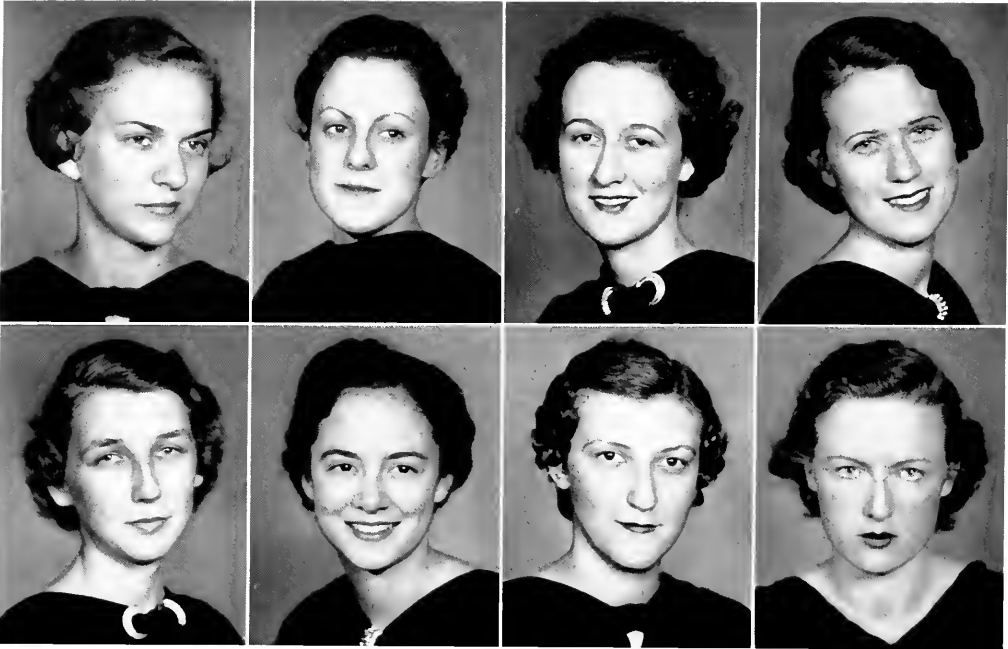
BRITTMAN
BURGESS

BROWN
BUTLER

BUNN
JULIA BUTLER

BURNETTE
CAPEL

1937 PINE NEEDLES



CARAWAY
COBURN

CARMICHAEL
COCKERHAM

CARPENTER
CODY

COBB
COLE

HERMINE CARAWAY, Wadesboro, N. C., *A.B.*; Education Club; Speaker's Club; Debating; Wesley Players; French Club; Virginia Intermont College.

GRACE CARMICHAEL, Rowland, N. C., *B.S. Music*; Dikean; Corresponding Secretary; Dikean Society (1, 2); Assistant Secretary College Choir (1, 2); Chairman College Choir (4); Honor Roll (1, 2, 3); College Chorus (1); Vesper Choir (1, 2, 3); College Choir (2, 3, 4); Madrigal Club (2, 3); Education Club (3, 4); Y Cabinet (3, 4).

TRANNIE COBURN, Raleigh, N. C., *B.S. Music*; Dikean; Meredith College.

DORIS COCKERHAM, Mount Airy, N. C., *B.S.-S.A.*; Altheian; Class Vice-President (1); Corresponding Secretary of Society (2); Intersociety Representative (3); President Altheian Society (4); Math Club (1, 2, 3, 4); Secretary-Treasurer Math Club (3); Playlikers (1, 2, 3); Education Club (3, 4); Daisy Chain (2); Honor Roll (1).

EDNA CARPENTER, Durham, N. C., *B.S.S.A.*; Altheian; Square Circle (1, 2); Junior-Freshman Wedding (3); College Choir (3, 4); Education Club (3, 4).

NELL COBB, Lumber Bridge, N. C., *A.B.*; Dikean; Education Club (4); Zoology Club (2, 3, 4), Vice-President (4); Botany Club (3, 4).

ETHEL CODY, Darlington, S. C., *B.S.S.A.*; Cornelian; St. Mary's Club (1); Honor Roll (2, 3); Business Staff *Carolinian*; Business Staff PINE NEEDLES.

ETHEL COLE, Biscoe, N. C., *B.S.H.E.*; Dikean; Home Economics Club; French Club (2); Soccer (3, 4); Basketball (1, 3); Education Club (4).

1937 PINE NEEDLES

MATALINE COLLETTE, Advance, N. C., *A.B., Chemistry*; Dikean; Mars Hill Junior College; Chemistry Club (3, 4); Education Club (4); Physics Club.

ELIZABETH COOKE, Florence, S. C., *B.S.H.E.*; Dikean; Playlikers (1, 2, 3, 4); Costume Mistress; Vice-President Home Economics Club; Dormitory Social Chairman (4); Society Nominations Chairman (4).

LOIS CORRELL, Cleveland, N. C., *A.B.*; Adelpian; Botany Club (2, 3, 4); Education Club (3, 4).

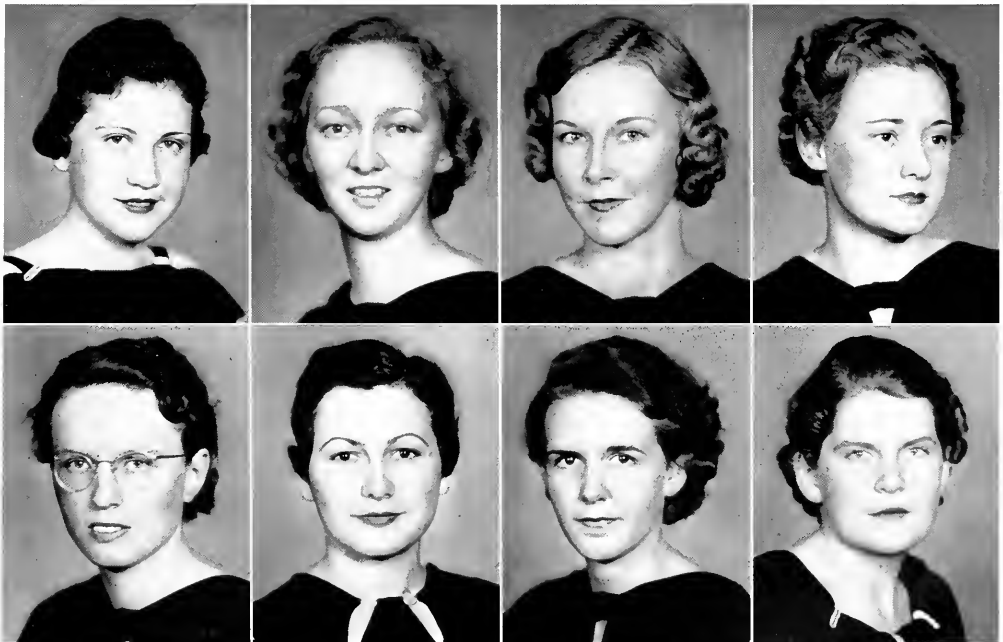
ANNICE CRAWFORD, Wilson, N. C., *B.S. Music*; Altheian; Education Club (4); Press Reporter Madrigal Club (2); President of Madrigal Club (4); College Choir (4); Librarian of College Choir (4); Y. W. C. A. (2, 3, 4).

ELIZABETH COPELAND, Marion, N. C., *B.S.S.A.*; Adelpian; Choir (1, 2); *Carolinian* Staff, Reporter (2); Associate Editor; Y Cabinet (4); Playlikers (2); International Relations Club (3, 4).

MARY C. CORNWELL, Lawndale, N. C., *A.B.*; Adelpian; Mars Hill (1, 2); Education Club (3, 4).

KATHERINE CROUCH, Stony Point, N. C., *B.S.-S.A.*; Dikean; Square Dance Club; Education Club; House Vice-President; Business Chairman A.A.

AILEEN CROWDER, Lattimore, N. C., *B.S.H.E.*; Adelpian; Education Club; College Choir (1, 2, 3); Y. W. C. A.; Home Economics Club (4); House Vice-President (1, 3).



COLLETTE
CORRELL

COOKE
CRAWFORD

COPELAND
CROUCH

CORNWELL
CROWDER



CRUTCHFIELD
DENNIS

CUMMINGS
DeVANY

DALTON
DICKINSON

DARDEN
DOWDY

HELEN CRUTCHFIELD, Greensboro, N. C., *A.B.*; Cornelian; Quill Club (2, 3, 4); French Club (2); Treasurer Day Students; Editor, *Coraddi* (4).

HELEN CUMMINGS, Guilford College, N. C., *B.S.H.E.*; Dikean; Home Economics Club.

RUTH DENNIS, Marshall, N. C., *B.S.S.A.*; Adelpian; Education Club (4); Clogging Club (2, 3); Y. W. C. A.; Wesley Foundation Council (2, 3), Vice-President.

MARGARET DeVANY, Norfolk, Va., *B.S.M.*; Adelpian; Freshman Commission; Secretary Vesper Choir; Varsity Soccer (1); House Vice-President (2, 3, 4); A.A. Cabinet (3); Vice-President Choir (3); Marshal (4); House President (4).

SARAH DALTON, Norton, Va., *A.B. Mathematics*; Adelpian; President Class (2); Sophomore Council (2); House President (3); Marshal (3); Chapel Committee (3); President Adelpian Society (4); Corresponding Secretary Society; Physics Club (3, 4); Square Circle Club (1, 2, 3, 4); Treasurer Education Club (4); Legislature (3); House Vice-President (2).

RACHEL DARDEN, Annapolis, Md., *A.B. Psychology*; Adelpian; St. Mary's Vestry (1, 2, 3, 4); Editorial Board *Carolinian* (4); International Relations Club (4); Alpha Kappa Delta Honorary Sociology Fraternity (4).

ALICE DICKINSON, Wilson, N. C., *B.S.P.E.*; Dikean; Secretary of Society; A.A. Cabinet; Orchestis; French Club; Home Economics Club; Committee Chairman Society; Square Dancing Club.

HILDA DOWDY, Durham, N. C., *B.S.M.*; Dikean; College Chorus (1); College Choir (3, 4); Y. W. C. A. (1, 2, 3, 4); Baptist Student Council (3).

1937 PINE NEEDLES

ELIZABETH DRAKE, Scotland Neck, N. C., *B.S. Music*; Aletheian; Soccer (1, 2, 3, 4), Manager (2), Coach (2), Varsity (2, 3); Gymnastics (1); Tennis (1); Choir (1, 2, 3, 4), Vice-President (4), Accompanist (3, 4); Legislature (3, 4); Point Committee (4); Honor Roll (3).

ELIZABETH DUPUY, Greensboro, N. C., *A.B.*; Cornelian; Y. W. C. A., Cabinet (2), Secretary (3), Vice-President (4); Secretary Cornelian Society (2); Student Volunteer Group, President (2); Speaker's Club, Secretary (3), President (4); Physics Club, Secretary (3); Editor-in-Chief College Handbook (4); *Carolinian* Staff (1, 2, 3); Honor Roll (2, 3).

KATHRYN ELLIS, Clayton, N. C., *A.B.*; Aletheian; Mars Hill College (1, 2); Education Club (3, 4).

ESTHER ELY, Jasper, Ala., *A.B.*; Cornelian; Averett College (1, 2); Education Club; Hockey; Field Ball; Y. W. C. A.

EDITH EDMONDSON, Plymouth, N. C., *B.S. Music*; Dikean; Choir (4); Madrigal Club (3).

ELOISE EFLAND, Efland, N. C., *B.S.S.A.*; Cornelian; Education Club (4); Daisy Chain (2); Volley Ball (4); Orchestis (3, 4).

HELEN ESHELMAN, High Point, N. C., *B.S.H.E.*; Cornelian; Home Economics Club; French Club.

BELVA FARMER, Marshall, N. C., *B.S.H.E.*; Adelpian; Home Economics Club (1, 2, 3, 4); French Club (2); Chemistry Club (3, 4); Clogging Club (2, 3); Education Club (4); Square Dance Club (3).



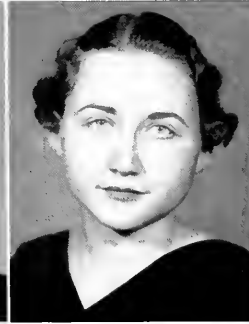
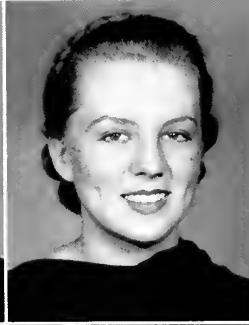
DRAKE
ELLIS

DUPUY
ELY

EDMONDSON
ESHELMAN

EFLAND
FARMER

1937 PINE NEEDLES



FELMET
GANT

FITZGERALD
GILBERT

FITZPATRICK
GIBSON

GAMBLE
GARDNER

MARY LEE FELMET, Asheville, N. C., *A.B.*; Dikean; Y. W. C. A. (3, 4); Education Club (4); Biltmore College (1, 2).

DOROTHY FITZPATRICK, Rougemont, N. C., *A.B.*; Altheian; Anderson College (1); Day Student (2); Marshal (4).

LOUISE FITZGERALD, Erwin, N. C., *A.B.*; *English*; Altheian; Education Club; French Club.

GLADYS GAMBLE, Savannah, Ga., *A.B.*; Dikean; Edgewood Park Junior College; Education Club; Vice-President Hall Committee of House Offenses.

ELIZABETH GANT, Burlington, N. C., *B.S.S.A.*; Adelpian; Salem College; Vice House President (2); Playlikers (2, 3, 4); Cabinet (4); St. Mary's Club (2, 3, 4).

EUGENIA GIBSON, Asheville, N. C.

KATHERINE GILBERT, Mount Airy, N. C., *B.S.-S.A.*; Altheian; Physics Club (1); *PINE NEEDLES* (1); *Carolinian* (1, 2, 3, 4); House Vice-President (2); Education Club (4); Y. W. C. A.

MARY LEE GARDNER, Warrenton, N. C., *A.B.*; *History*; Altheian; Campbell College (1, 2); Playlikers (3, 4); Education Club (4); Vice House President (4); Photo Editor *PINE NEEDLES* (4).

1937 PINE NEEDLES

ETTA MAE GODWIN, Durham, N. C., *A.B. Grammar Grade Education*; Dikean; Education Club; Botany Club.

JANE GOODWIN, Greensboro, N. C., *B.S.S.A.*; Cornelian; Playlikers; PINE NEEDLES (3, 4); *Carolinian* Staff; Y. W. C. A. (2); Committee Chairman Cornelian Dance (3); Committee Chairman Junior Dance (3); Education Club.

JANET GRIFFIN, Rich Square, N. C., *A.B. Education*; Adelphian; Botany Club (3, 4); Education Club (3, 4); Y. W. C. A. (2, 3, 4); House Vice-President (1, 2); French Club (2, 3); PINE NEEDLES Staff (2, 3); Editor-in-Chief (4); Wake Forest Summer School (2); Student Activities Committee (4).

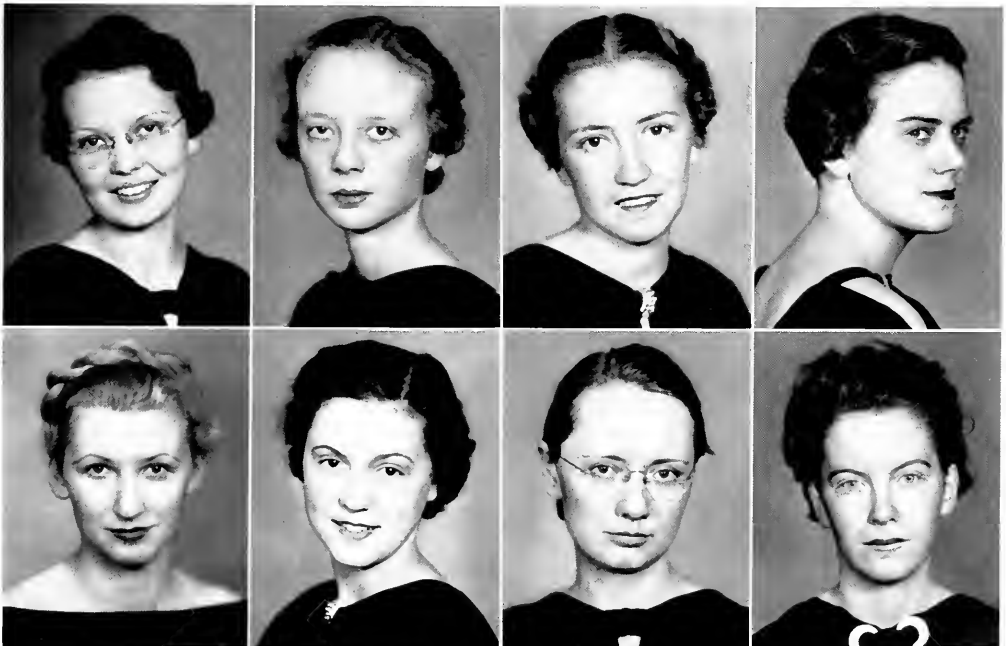
ALLEINE GRIMES, Greensboro, N. C., *B.S. Music*; Aetheian; College Choir (4); Education Club (4); Day Students' Advisory Board (2); Madrigal Club (3, 4), Vice-President (4).

JOSEPHINE GORHAM, Rocky Mount, N. C., *B.S.-S.I.*; Dikean; Swimming (1); Hockey (2); Dolphin (3, 4); Education Club (3, 4); Life Saving (3); Playlikers (4).

RUTH GORHAM, Battleboro, N. C., *A.B.*; Adelphian; President of Y. W. C. A. (4); Education Club; French Club; College Choir (2, 3).

ELIZABETH GRIMSLEY, Council, N. C., *A.B.*; Adelphian; Pineland College (1, 2); Education Club (4).

ELIZABETH GROVERMAN, Georgetown, S. C., *B.S.H.E.*; Dikean; Home Economics Club.



GODWIN
GRIFFIN

GOODWIN
GRIMES

J. GORHAM
GRIMSLEY

R. GORHAM
GROVERMAN

1937 PINE NEEDLES



GURLEY
HANKS

GWYN
HANKINS

HAMLIN
HARDISON

HAMRICK
HARRELL

SYBIL GURLEY, Hendersonville, N. C., *A.B.*; Cornelian; *Coraddi* Staff, Vice-President (3); Quill Club; Education Club.

SCOTT GWYN, Mount Airy, N. C., *B.S.S.A.*; Aletheian, House Vice-President; Education Club; Seal Club; Life Saver; Tennis Team (3); Soccer (2).

ELIZABETH HANKS, New Bern, N. C., *B.S.S.A.*; Adelpian; St. Mary's Junior College.

MARY HANKINS, Kemersville, N. C., *A.B.*; Dikean; Vice House President (1); French Club (3, 4); Education Club (3, 4).

SUSAN HAMLIN, Garden City, N. Y., *A.B.*; Cornelian; A.A. Cabinet (3, 4); Honor Roll (3); Judicial Board (4); President of St. Mary's Club; Clogging Club (2, 3); Orchesis (3, 4); Cornelian Dance Committee; Junior-Senior Dance Committee (3); President of Cornelian Society (4).

HELEN HAMRICK, Shelby, N. C., *A.B. History*; Dikean; Education Club (4).

WILMA HARDISON, Arapahoe, N. C., *B.S.H.E.*; Dikean; Home Economics Club (3, 4); Education Club (4).

LYNNE HARRELL, Marshville, N. C., *A.B.*; Aletheian; Wingate Junior College (1, 2); French Club; Education Club; Y. W. C. A.

1937 PINE NEEDLES

GRACE HARRIMAN, Asbury Park, N. J., *A.B. Psychology*; Dikean; Home Economics Club (2, 3, 4); Dolphin (1, 2, 3, 4); A.A. Cabinet (3, 4); Volley Ball Varsity (2, 3); Dikean Sports Day Chairman (3); Senior Unmusical (4); Dikean Society President (4).

REBECCA HARRISON, Williamston, N. C., *A.B.*; Aletheian; Salem College; Education Club (4); Botany Club (3, 4); Choir (3, 4).

FLORA HAYNES, Hays, N. C.

MILDRED HELLEN, Vanceboro, N. C., *A.B. Primary Education*; Dikean; Choir (4); Education Club; Mars Hill College.

LILLIAN HASSELL, Jamestown, N. C., *A.B.*; Guilford College (1, 2, 3).

ANNE HAYNES, Greensboro, N. C., *B.S.S.A.*; Adelpian; Marshal (3); Vice-President Adelpian Society (4); Junior Advisor (3); Playlikers (4).

MARY HESTER, Greensboro, N. C., *B.S.S.A.*; Cornelian; French Club (2); Day Student Advisory Board (1, 2, 3); Playlikers (4).

ETHALYN HICKS, Marion, N. C., *A.B. Primary Education*; Dikean; Playlikers (1, 2, 3, 4); Education Club; Business Staff of *Carolinian* (4); Circulation Staff of *Carolinian* (4); Business Staff of PINE NEEDLES (4); Botany Club (4); Wesley Players; Wesley Foundation; Y. W. C. A.



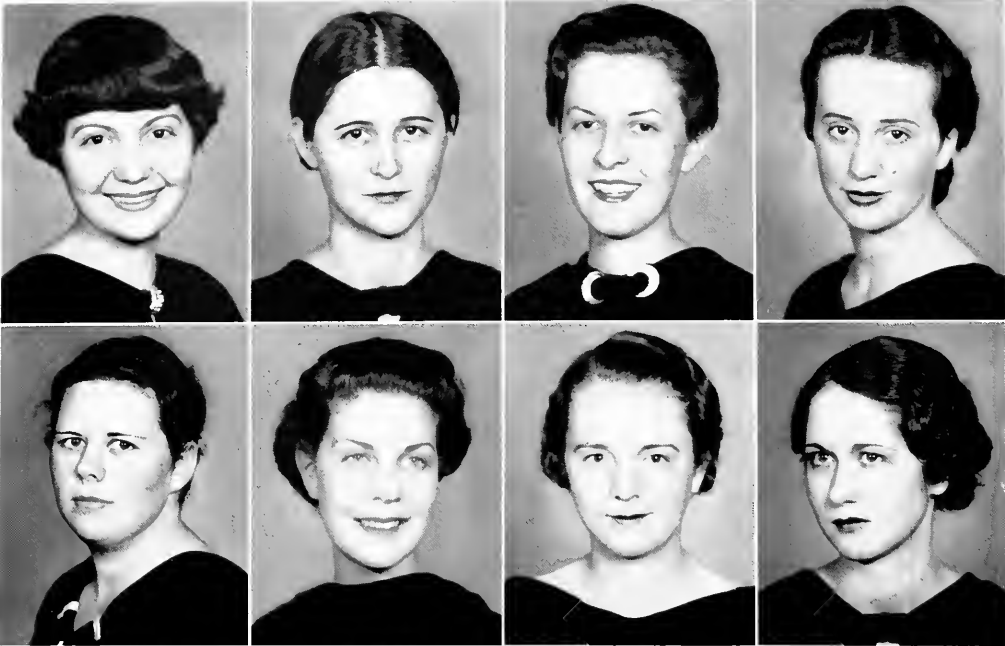
HARRIMAN
F. HAYNES

HARRISON
HELLEN

HASSELL
HESTER

A. HAYNES
HICKS

1937 PINE NEEDLES



HILL
JOHNSON

HOLLAND
HOUGH

HOLLOWELL
HOLTON

HOLT
JOHNSON

RUTH HILL, Greensboro, N. C., *A.B.*; Adelphian; Orchestra; Quill Club; Playlikers; *Coraddi* Staff (4); President of Day Students' Association (4); Business Manager of College Handbook (4).

MARGUERITE HOLLAND, Lumberton, N. C., *A.B.*; Aletheian.

EVELYN JOHNSON, Roanoke Rapids, N. C., *B.S.-S.A.*; Cornelian; Honor Roll (3); Education Club; Judicial Board; House Vice-President (3); Chairman of Chapel Committee; College Choir (1, 3); Soccer (3); *Carolinian* Staff; Circulation Manager of *Carolinian* (4).

ALETHEA HOUGH, Oak Ridge, N. C., *B.S.S.A.*; Dikean; Basketball (1); Tennis (1, 2); Education Club (3, 4); House Vice-President (3); Chairman of Junior-Freshman Wedding (3); Chairman of Junior-Senior Dance (3); Marshal (4); House President (4); *Carolinian* (3, 4); Circulation Manager *Carolinian* (4); Legislature (4).

KATHRYN HOLLOWELL, Hobbsville, N. C., *A.B.*; Cornelian; Mars Hill Junior College; President of Education Club (4); Y. W. C. A. (3, 4); Education Club (3, 4).

RUTH HOLT, Graham, N. C., *A.B.*; Dikean; Lees-McRea Junior College; Education Club; Y. W. C. A.; House Vice-President (3).

BETSY HOLTON, High Point, N. C., *A.B.*; *Sociology*; Adelphian; Sociology Club; Education Club.

WILMA JOHNSON, Conway, N. C., *A.B.*; Aletheian; Education Club; Mars Hill Junior College.

1937 PINE NEEDLES

SARAH JOHNSTON, Mooresville, N. C., *B.S. Music*; Aethelian; St. Mary's Club (1, 2, 3, 4); Daisy Chain (2); House Vice-President (3, 4); Botany Club (4); Hiking Club (2, 3); Y. W. C. A. (1, 2, 3, 4); French Club; Soccer (3, 4).

DOROTHY JONES, Kinston, N. C., *A.B. French*; Cornelian; Atlantic Christian College; French Club (3, 4); Education Club (4); College Choir (3, 4); Y. W. C. A.

BESSIE KELLOGG, Sunbury, N. C., *B.S.S.A.*; Cornelian.

THELMA KILLIAN, Asheville, N. C., *A.B.*; Cornelian; Mars Hill (1, 2); Education Club; Y. W. C. A.

HORTENSE JONES, Greensboro, N. C., *B.S.S.A.*; Dikean; Junior Orchesis (2, 3); Business Staff of *Carolinian*.

LILLIAN JORDAN, Hartsville, S. C., *A.B.*; Cornelian; Daisy Chain Chairman (2); Jacket Committee (2); Playlikers (3, 4); Secretary Orchesis (3, 4); Sociology Club (3, 4); Marshal (4); House President (4).

ELIZABETH KING, Annapolis, Maryland, *B.S.S.A.*; Adelpian; Education Club (3, 4); Orchestra (1, 2, 3); Swimming (1); House Vice-President (4).

MARY H. KING, Greensboro, N. C., *B.S.H.E.*; Aethelian; Honor Roll (1); Physics Club (1); Home Economics Club (1); Honor Roll (2, 3); Chemistry Club (2); Vice-President of Day Students; President Home Economics Club; Playlikers (4); Education Club (4).



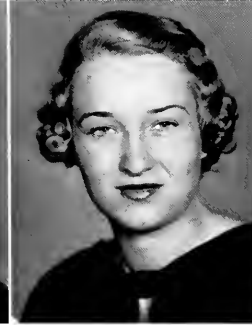
JOHNSTON
KELLOGG

D. JONES
KILLIAN

H. JONES
E. KING

JORDAN
M. KING

1937 PINE NEEDLES



KLUTTZ
A. LEE

KNOX
M. LEE

KUHN
S. LEE

LEAVITT
LeROY

BRYTE KLUTTZ, Salisbury, N. C., *A.B.*; Dikean; Education Club; Y. W. C. A.; French Club.

ROSEMARY KUHN, Greensboro, N. C., *B.S.S.S.*; Dikean; Speaker's Club; Playlikers.

CLARA KNOX, Bear Poplar, N. C.

MERLE LEAVITT, Exeter, New Hampshire, *A.B.*; Adelpian.

ANNABELLE LEE, Fallston, N. C., *A.B.*; Aletheian; Mars Hill College (1, 2); Square Circle (3, 4); Secretary-Treasurer Square Circle (4); Education Club (4).

SIDNEY LEE, Clinton, N. C., *B.S.S.A.*; Aletheian; French Club; Education Club.

MARJORIE LEE, Oriental, N. C., *B.S.S.A.*; Dikean; House Vice-President (1); Y. W. C. A.; Clogging Club (2); *Carolinian* (1, 2, 3, 4); Education Club; International Relations Club.

MARGARET LEROY, Elizabeth City, N. C., *A.B.*; Aletheian; Square Circle (1, 2, 3, 4), President (4); Chemistry Club (3); Education Club (4); Honor Roll (1, 2).

1937 PINE NEEDLES

MABEL LIVINGSTON, Laurel Hill, N. C., *A.B.*;
Dikean; Vice-President of Chemistry Club (3, 4);
Math Club (2, 3, 4); Physics Club (3, 4).

GLADYS LOWERY, Wingate, N. C., *A.B.*; Dikean;
French Club; Education Club; Baptist Student Union
Council.

LURA McCracken, Asheville, N. C., *A.B.*; Adel-
phian; Education Club; Mars Hill College (1, 2).

ROSSELL MacDONALD, Norton, Va., *B.S.S.A.*;
Altheian; Averett College (1, 2); Education Club;
Y. W. C. A.; Vice House President (3); Soccer, Field
Ball, Basketball.

JOSEPHINE LUCAS, Greensboro, N. C., *B.S.P.E.*;
Dikean; Vice-President A.A. (3); President A.A.
(4); Marshal (3); Hockey Varsity (1, 2, 3); Basket-
ball Varsity (3); Clogging Club (2, 3, 4); Orchesis
(3, 4); Chemistry Club (2); Secretary-Treasurer of
Clogging Club (3); Education Club (4).

ALMA McCAIN, High Point, N. C., *A.B. Sociology*;
Cornelian; Daisy Chain (2); Judicial Board (3);
Treasurer of Cornelian Society (3); Vice-President
of Cornelian (4); College Choir (2); Honor Roll
(3); Alpha Kappa Delta (3, 4); International Rela-
tions Club (3, 4); Sociology Club (3, 4); Chapel Com-
mittee (4); Education Club (4).

DOROTHY MacDOUGALD, Clarkton, N. C., *A.B.*;
Cornelian; Peace Junior College (1, 2); Y. W. C. A.;
College Choir (3); Education Club.

ELIZABETH McEACHERN, Concord, N. C., *A.B.*;
Adelphian; Sociology Club; Y. W. C. A.; President
Lutheran Student (3); Inter-Religious Council (3).



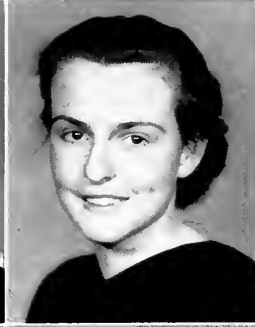
LIVINGSTON
McCracken

LOWERY
MacDONALD

LUCAS
MacDOUGALD

McCAIN
McEACHERN

1937 PINE NEEDLES



McRAE
MOORE

MACKIE
J. MORRISON

MALLO
L. MORRISON

MELCHOR
I. MOSELEY

MARTHA McRAE, Charlotte, N. C., *B.S.S.A.*; Adelphian; Freshman Commission (1); House Vice President (1); French Club (1); Sophomore Y Cabinet (2); Chapel Committee (2); Wesley Student Council (2, 3); Board of Offenses (3); Society Treasurer (3); Legislature (3); Finance Board (3); Society Dance Chairman (3); Honor Roll (3); Playlikers (4); College Social Chairman (4); Marshal (4).

ANNIE MACKIE, Granite Falls, N. C., *A.B. English*; Adelphian; Mars Hill Junior College (1, 2); Zoology Field Club (3, 4); President of Baptist Student Union (4); Education Club (3, 4).

MARIE MOORE, Washington, N. C., *A.B.*; Cornelian; St. Mary's Club (1, 2, 3, 4); Vestry (3, 4); Clogging Club (3); Education Club, Secretary (4); Chairman of Program Committee of Cornelian Society (4).

JANET MORRISON, Shelby, N. C., *B.S.P.E.*; Adelphian; Orchesis (3, 4); Education Club (3, 4); Soccer Varsity (2); Square Dance Club (3, 4); Soccer Head (4); A.A. Cabinet (4).

OLGA MALLO, Havana, Cuba, *A.B.*; Dikean; Vice-President Square Circle; Intersociety Representative; Vice-President Sophomore Class; Education Club; Honor Roll (1, 2).

SHIRLEY MELCHOR, Mooresville, N. C., *A.B. Biology*; Dikean; Honor Roll (1, 2, 3); Class Treasurer (2); Judicial Board (4); Honor Board (4); A.-A. Cabinet (2); PINE NEEDLES Staff (2); Square Circle (1); French Club (1, 2); Zoology Field Club (2); Botany Club (3); Chairman Social Committee (4); International Relations Club, Secretary (3), President (4); Chemistry Club (3, 4).

LAURA MORRISON, Mooresville, N. C., *B.S.S.A.*; Dikean.

ISABELLE MOSELEY, Kinston, N. C., *B.S.H.E.*; Adelphian; Home Economics Club (1, 2, 3, 4), Publicity Chairman (4); Baseball (1); Legislature (4); Orchesis (3); Physics Club (2, 3, 4); Marshal (4); Summer School House Vice-President; Education Club (4).

1937 PINE NEEDLES

VIRGINIA MOSELEY, Kinston, N. C., *B.S.S.A.*; Dikean; Vice-President of Class (3); Vice-President of Education Club (4).

RACHEL MOSER, Greensboro, N. C., *B.S.H.E.*; Adelpian; Home Economics Club (1, 2, 3, 4), Secretary (2); Vesper Choir (1, 2); College Choir (2, 3, 4); President of Day Students Council; President Lutheran Student Association; German Club (1, 2).

MARY NUNN, New Bern, N. C., *B.S.S.A.*; Adelpian; Vice-President of Sophomore Class (2); President of Junior Class; Finance Board (4); Daisy Chain (2); Playlikers; Student Activities Commission (3).

FLORENCE NELSON, New Britain, Conn., *B.S.-P.E.*; Dikean; Playlikers (1, 2, 3, 4); Clogging Club (2, 3, 4); Volley Ball (1, 2); Orchestra (3, 4); Cheer Leader (4); Hockey Varsity (3); Square Dance Club (2); Athletic Association (1, 2, 3, 4); Education Club (4); Hockey (1, 2, 3, 4).

RACHEL MOWER, Newberry, S. C., *A.B. History*; Aletheian; Coker College (1); Marshal (4); House Vice-President (4).

MARTHA NESBITT, Fairview, N. C., *A.B.*; Adelpian; Y. W. C. A. (3, 4); Sociology Club (3, 4); Biltmore College (1, 2).

GRETCHEN OSBORN, Guilford College, N. C., *A.B. Sociology*; Aletheian; Appalachian State Teachers College (1, 2); House Vice-President (3).

MARY PATE, Rowland, N. C., *B.S. Music*; Aletheian; Choir (1, 2); Vesper Choir (1, 2).



V. MOSELEY
NUNN

MOSER
NELSON

MOWER
OSBORN

NESBITT
PATE

1937 PINE NEEDLES



PENDLETON
POE

PERRY
POOSER

PHRYDAS
POWELL

PIPKIN
PRITCHARD

AILEEN PENDLETON, Hendersonville, N. C., *B.S.P.E.*; Altheian; Basketball Manager (2); Secretary A.A. (3, 4); Treasurer Senior Class (4); Orchestis (3, 4); Education Club (4).

IRENE PHRYDAS, Greensboro, N. C., *A.B.*; Adelpkian (1, 2); German Club (1); Chemistry Club (3, 4); Zoology Field Club (4).

MARGARET PERRY, Waynesville, N. C., *A.B.*; Cornelian; Milligan College.

CYNTHIA PIPKIN, Greensboro, N. C., *B.S.S.L.*; Adelpkian.

ALICE POE, Raleigh, N. C., *A.B.*; St. Mary's (1, 2); Meredith College (3).

LUCY POWELL, Whiteville, N. C., *A.B.*; Adelpkian; House Vice-President (1); French Club (3, 4); Education Club (4); Adelpkian Dance Committee (3).

HELEN POOSER, Gibson, N. C., *A.B.*; Adelpkian; Education Club (3, 4); Clogging Club (2); Young Voters Club (1, 2).

GLADYS PRITCHARD, Elizabeth City, N. C., *A.B.*; Altheian; Botany Club (3, 4); Education Club (3, 4); Zoology Club (3, 4).

1937 PINE NEEDLES

CAROLYN PROUT, Owings, Md., *B.S.S.A.*; Cornelian; Education Club (3, 4); Marshal (4); Soccer (3); A.A. Cabinet (3, 4); Tennis (2, 3, 4); Volley Ball (1); Treasurer Junior Class (3).

LAURA ALICE REED, Winston-Salem, N. C., *A.B.*; Cornelian; French Club (1, 2, 3, 4); A.A. (1, 2, 3, 4); Committee of Offenses (1); German Club (2, 3); College Hostess (4); Junior Advisor (3); Y. W. C. A.

LILLIAN PUGH, New Rochelle, New York, *A.B.*; Cornelian; Education Club; Honor Roll.

RUTH REID, Harmony, N. C., *B.S.S.A.*; Adelpian; Vice House President (3, 4); Education Club (4).

GRACE REYNOLDS, New York City, *A.B.*; Adelpian; Botany Club (3, 4); Physics Club (3, 4); *Carolinian* Staff (4); Education Club (4); Vesper Choir (1); Columbia S.S. (1).

MARIE ROBERTS, Bahama, N. C., *A.B.*; Adelpian; Physics Club (2, 3), President (4); Chemistry Club (3), Treasurer (4); Y. W. C. A. (3); A.A. (1, 2, 3, 4).

HELEN ROBERTS, Candler, N. C., *A.B.*; Adelpian; Education Club (4); Mars Hill College (1, 2); Botany Club (3, 4); Y. W. C. A. (3, 4).

FLORENCE ROBINSON, Greensboro, N. C., *A.B.*; Cornelian; Honor Roll (3); Education Club (3, 4); Botany Club (4).



PROUT
REYNOLDS

PUGH
H. ROBERTS

REED
M. ROBERTS

REID
ROBINSON

1937 PINE NEEDLES



ROLLINS
SAUNDERS

ROYALL
SAVAGE

RYAN
SCARBOROUGH

SANDERS
SCHLOSSER

WILLIE REE ROLLINS, Hickory, N. C., *A.B.*; Cornelian; Art Club; Education Club (4).

LETHA ROYALL, Salemburg, N.C., *A.B.*; Altheian; French Club (3); Education Club (4); Y. W. C. A. (3); Pineland College (1, 2).

MARY NEIL SAUNDERS, Rocky Mount, N. C., *B.S. Music*; Altheian; College Choir (1, 2, 3, 4); Vesper Choir (2); College Cheer Leader (4); Clog-ging Club (2); Dormitory Social Chairman (3).

DAPHNE SAVAGE, Norfolk, Va., *A.B.*; Cornelian; College Choir (2, 3, 4); Swimming Team (3); Tennis Team (3); Class Treasurer (2); House President (4); Sociology Club (3, 4); Alpha Kappa Delta (3, 4); *Carolinian* Staff (2, 3); Legislature (4); Point System Committee (3, 4).

ALICE RYAN, East Hampton, Mass., *A.B.*; Cornelian; French Club (1, 2, 3, 4); Chemistry Club (3, 4); Education Club (4); Vice House President (4).

MARY ELIZABETH SANDERS, Roxboro, N. C., *B.S. Music*; Cornelian; College Choir (1, 3, 4); Ger-man Club (1); Madrigal Club (2, 3, 4); Education Club (4); House President (4); Marshal (4); Point Committee (4).

LUCILE SCARBOROUGH, Annapolis, Maryland.

WILFRED SCHLOSSER, Greensboro, N. C., *B.S.-S..I.*; Cornelian; Greensboro College (1, 2); Play-likers (4).

1937 PINE NEEDLES

EVA MAE SCOTT, Lucama, N. C., *B.S.S.A.*; Adelphian; Education Club (4); PINE NEEDLES Staff (4); Carolinian Staff (4).

DOROTHY SHERWIN, Greensboro, N. C., *A.B. Chemistry*; Dikean; Chemistry Club (2, 3, 4), Secretary-Treasurer (3), President (4); Physics Club (1, 2, 3, 4), Vice-President (3), Secretary-Treasurer (4); Education Club (3, 4); Clogging Club (3); Basketball (1).

MARY SHEPARD, Liberty, N. C.

AUDREE SHORE, Cycle, N. C., *A.B.*; Cornelian; Education Club (4); Y. W. C. A. (4); Long Beach College (1).

CORRYE SHORES, Spartanburg, S. C., *B.S.S.A.*; Aethelian; Coker College (1, 2); Education Club (4).

DOROTHY SILVERMAN, Morristown, New Jersey, *A.B.*; Adelphian; Speakers Club (4); Honor Roll (3).

MILDRED SHUMATE, Charlotte, N. C., *A.B.*; Aethelian; Education Club (4); Square Dance Club (2, 3, 4); Basketball (2, 3, 4).

ERLEAN SLOOP, Mooresville, N. C., *A.B.*; Adelphian; College Choir (1); College Chorus (2); Chemistry Club (3); French Club (2); Education Club (4).



SCOTT
SHORES

SHEPARD
SHUMATE

SHERWIN
SILVERMAN

SHORE
SLOOP

1937 PINE NEEDLES



SMITH
STEWART

SOLOMON
STRICKLAND

SPINKS
STURDIVANT

STEELE
SWAIN

DOROTHY SMITH, Pikeville, N. C., *B.S.H.E.*; Cornelian; Home Economics Club (3, 4); Education Club (4).

GERALDINE SPINKS, Raleigh, N. C., *A.B.*; Altheian; House President (3); Marshal (4); Vice-President Student Government (4).

GLADYS SOLOMON, Fort Valley, Ga., *B.S.S.A.*; Altheian; Speakers Club (4); University of Ga. (1, 2).

MAUDE STEELE, Wagram, N. C., *A.B.*; Dikean; Education Club (4); A.S.T.C. Boone (1, 2).

JULIA STEWART, Clinton, N. C., *B.S.S.A.*; Adelpian; College Choir (3, 4); Pineland College (1, 2); Dormitory Social Chairman (4).

PATRICIA STURDIVANT, Marshville, N. C., *A.B.*; Altheian; Education Club (4); Y. W. C. A. (3, 4); House Vice-President (4); Wingate College (1, 2).

MAXINE STRICKLAND, Stedman, N. C., *A.B.*; Cornelian; Vesper Choir (1); Education Club (4); College Chorus (1, 2).

LENORE SWAIN, Asheville, N. C., *A.B.*; Cornelian; Education Club (4); French Club (2).

1937 PINE NEEDLES

BULUS SWIFT, Montezuma, N. C., *A.B.*: Dikean; Honor Roll (1, 3); Business Manager *Coraddi* (4); Y. Cabinet (1); Treasurer Student Government (2); Treasurer of Class (1); *Carolinian* Staff (1).

MILDRED SWIFT, Red Bank, New Jersey, *A.B.*: Aletheian; Soccer (1, 2, 3, 4); Judicial Board (3, 4); Tennis (1, 2, 3, 4); President French Club (4); Little French Club (3, 4); Secretary of Playlikers (3); *Carolinian* Staff (2, 3).

KATHRYN TATE, Wichita, Kansas, *B.S. Music*: Aletheian; Freshman Commission (1); College Choir (1, 2, 3, 4); Vesper Choir (2); Orchesis (3, 4).

JUNE TORIAN, Asheville, N. C., *A.B.*: Aletheian; St. Genevieve of the Pines (1, 2); Art Club; Education Club (4).

NANCY TALBERT, Rock Hill, S. C., *A.B.*: Cornelian.

EVELYN TART, Dunn, N. C., *B.S.P.E.*: Aletheian; Clogging Club (2, 3, 4), Vice-President (3), President (4); Orchesis (2, 3, 4); Playlikers (2, 3, 4); Treasurer Aletheian Society (4); A.A. Cabinet (3, 4).

WILLA TOWNE, Stanford, Conn., *B.S.H.E.*: Dikean; Y. Cabinet (2, 3); House Vice-President (2); Honor Roll (1); Home Economics Club (1, 2, 3, 4).

SARAH TRICE, Fayetteville, N. C., *A.B.*: Dikean; Playlikers (1, 2); Botany Club (2, 3, 4); Education Club (4); Y. W. C. A. (1, 2, 3, 4); Tennis (1, 2).



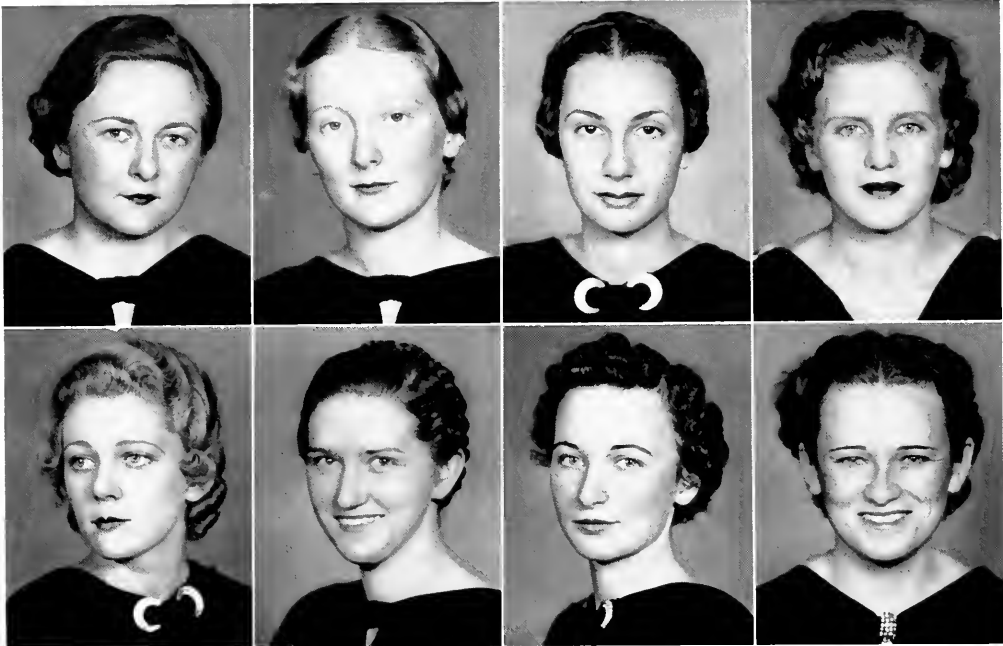
B. SWIFT
TATE

M. SWIFT
TORIAN

TALBERT
TOWNE

TART
TRICE

1937 PINE NEEDLES



ULLRICH
WAGNER

URQUHART
WAKEFIELD

VICTOR
De W. WARD

VUNCANNON
M. W. WARD

JUSTINE ULLRICH, Mt. Clemens, Mich., *B.S.S.A.*: Dikean; Class President (2); Y. W. C. A. Council (2), Cabinet (2, 3); Playlikers (2, 3, 4); Business Manager (3); Masqueraders (3, 4); Daisy Chain (2); Student Activities Committee (2, 4); Secretary Student Government (3), President (4); Judicial Board (3, 4); Administrative Board (4); Chapel Committee (4).

KATE URQUHART, Woodville, N. C., *A.B. English*: Dikean; Freshman Commission (1); A.A. Cabinet (2, 3); PINE NEEDLES Staff (1, 2); Quill Club (2, 3, 4); Honor Roll (1, 2); *Carolinian* Staff (1, 2, 3, 4), Managing Editor (3), Editor-in-Chief (4); Baseball (1, 2, 4); Hockey (2).

JOSEPHINE WAGNER, West Chester, Penn., *B.S.-S.A.*: Dikean; Duke University (1, 2); PINE NEEDLES Staff (4).

KATHLEEN WAKEFIELD, Guilford, N. C., *A.B.*: Adelpian.

LILLA VICTOR, Savannah, Ga., *A.B.*: Aetheian; Orchesis (1, 2, 3, 4), Secretary-Treasurer (2); Honor Roll (1, 2); French Club (1, 2); Alpha Kappa Delta.

HAZEL VUNCANNON, Ellerbe, N. C., *A.B.*: Adelpian; Y. W. C. A. (3, 4); Education Club (3, 4); French Club (3).

DE WILLA WARD, Whitakers, N. C., *B.S.H.E.*: Cornelian; Home Economics Club (2, 3, 4); Education Club (4).

MARY WILLIAMS WARD, Burgaw, N. C., *A.B.*: Aetheian; Botany Club (3, 4); Zoology Field Club (4); Education Club (4).

1937 PINE NEEDLES

ANNE WATKINS, Salisbury, N. C., *B.S.S.A.*: Cornelian; Marshal (3); Orchesis (3, 4); Dolphin (3, 4); Education Club (3, 4); Playlikers (4).

ANN WEBER, Statesville, N. C., *A.B.*: Adelphian; College Choir (3, 4); Education Club (4).

SARAH WHITESIDE, Rutherfordon, N. C., *B.S.-S.A.*: Cornelian.

ELIZABETH WESTERVELT, Hempstead, N. Y., *B.S.P.E.*: Dikean; House President (4); A.A. Cabinet (4); Orchesis (3, 4); Clogging Club (2, 3); Square Dance Club (2, 3).

RUTH WEITZEL, Manheim, Penn., *A.B.*: Aletheian; Education Club (4); Speakers Club (1, 2, 3); Junior Advisor (3); Secretary Junior Class; Aletheian Dance Committee (3), Vice-President (4).

ELIZABETH WENZ, Asheville, N. C., *B.S.S.A.*: Aletheian; *Carolinian* Staff (4); German Club (1); Y. W. C. A. (1, 2, 3, 4).

ROWENA WILKINSON, Whiteville, N. C., *B.S.-P.E.*: Dikean; Education Club (3, 4); A.A. Cabinet (4); Square Dance Club (3, 4), President (4).

BETSY WILLIAMS, New Bern, N. C., *A.B.*: Adelphian; Y. W. C. A. (1, 2); Treasurer of Y. (2); Legislature (2); House President (3); Judicial Board (4); Honor Board (4); A.A. (2, 3, 4); Dolphin Club (1, 2, 3, 4); Playlikers (1, 2, 3, 4), Stage Manager (3), Production Manager (4); Masqueraders (3, 4).



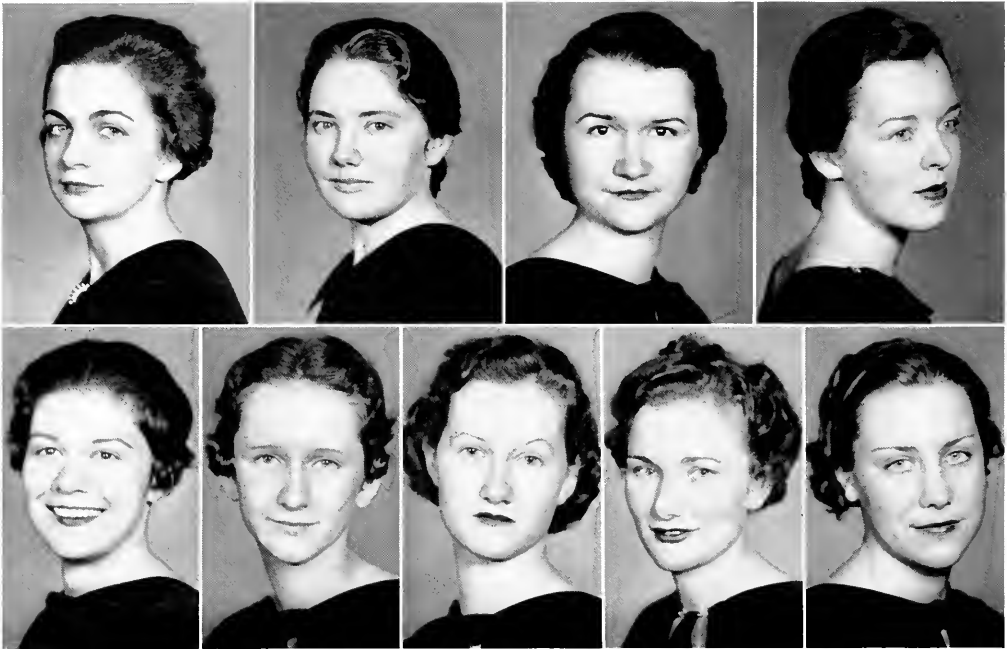
WATKINS
WHITESIDE

WEBER
WESTERVELT

WEITZEL
WILKINSON

WENZ
B. WILLIAMS

1937 PINE NEEDLES



E. WILLIAMS
WISWALL

F. WILLIAMS
WITHERSPOON

WOMBLE

R. WILLIAMS
YOUNG

WINSPEAR
YUNKER

ESTHER WILLIAMS, Wilmington, N. C., *A.B.*; *Altheian*.

FAE WILLIAMS, Stokestale, N. C., *B.S.H.E.*; *Cornelian*; Education Club (4); Home Economics Club (4).

MARTHA WISWALL, Asheville, N. C., *A.B.*; *Cornelian*; Honor Roll (3); Botany Club (4); Chemistry Club (4); Zoology Club (3, 4).

MARY WITHERSPOON, Murphy, N. C., *A.B.*; *Cornelian*; Honor Roll (1); Y. W. C. A.; *Playlikers* (1, 2, 3, 4); Education Club (3, 4); Botany Club.

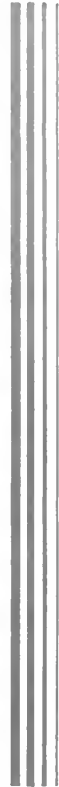
REBECCA WILLIAMS, Monroe, N. C., *A.B. History*; *Adelphian*; Y. W. C. A. (3, 4); Education Club (4); Wingate College (1, 2).

ELIZABETH WINSPEAR, Buffalo, N. Y., *A.B.*; *Cornelian*; Vice-President (4); Quill Club President (4); Legislature (3); Class Secretary (2); *Carolinian* Staff (3, 4); *Coraddi* (2, 3, 4).

JANE WOMBLE, Greensboro, N. C., *B.S.H.E.*; *Dikean*; Home Economics Club (1, 2, 3, 4); German Club (1, 2); Junior Advisor.

MARIE YOUNG, Canton, N. C., *A.B.*; *Cornelian*; Mars Hill College (1, 2); Education Club (3, 4).

MILLY YUNKER, Springfield, Mass., *B.S.S.A.*; *Cornelian*; House Vice-President (1); Soccer (1, 2, 3, 4); Tennis (3); Life Saving (1); Junior Shop Manager (3); Class Secretary (4); German Club (1, 2); Honor Roll (1); Archery (2).



JUNIORS



JUNIOR CLASS

OFFICERS

VIVIAN ROTHACHER
President of Junior Class

LILLYAN MILLER
Vice-President

MARY BONEY
Secretary

RUTH WESCOTT
Treasurer



ROTHACHER



MILLER



INGRAHAM

MISS HELEN INGRAHAM
Chairman of Junior Class

ALICE ELIZABETH CRITTENDEN
Mascot of Junior Class



WESCOTT

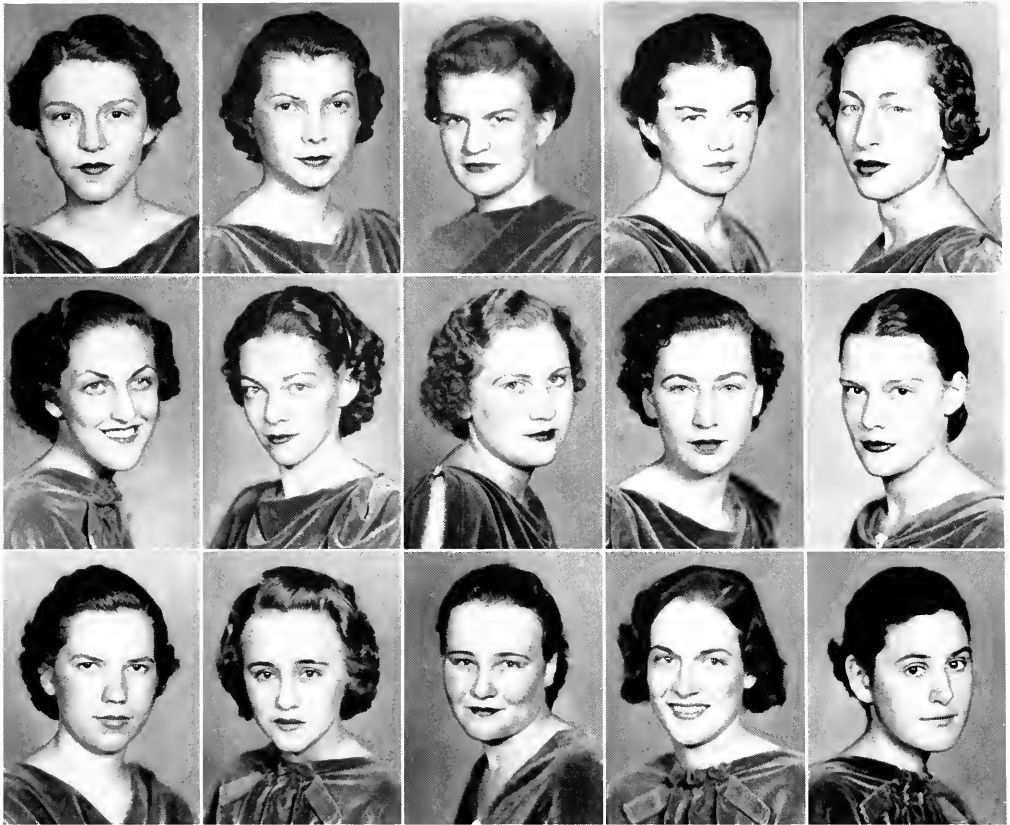


BONEY



CRITTENDEN

1937 PINE NEEDLES



ABBITT
ARCHIBALD
K. AYCOCK

ABBOTT
ARNETT
AYERS

ADAMS
ARNEY
BAILEY

AGNEW
AVERY
BAISE

APPLEBAUM
E. AYCOCK
BARNES

JEAN ABBITT

Wilson, N. C.

GLADYS ARNEY

Morganton, N. C.

LUCY ABBOTT

Winterville, N. C.

RUTH AVERY

Selma, N. C.

FLORA ADAMS

Dillon, S. C.

ELIZABETH AYCOCK

Fremont, N. C.

MARY AGNEW

Detroit, Mich.

KATHERINE AYCOCK

Selma, N. C.

GERTRUDE APPLEBAUM

Huntington, N. Y.

RUTH AYERS

Pine Hall, N. C.

MARY ARCHIBALD

Concord, N. C.

MURIEL BAILEY

Zebulon, N. C.

GEORGIA ARNETT

Greensboro, N. C.

PAULINE BAISE

Reidsville, N. C.

HAZEL BARNES

Taylorsville, N. C.

1937 PINE NEEDLES



BARRETT
BELL
BONEY

BATEMAN
BENTON
BRISTOL

BATTE
BIEBIGEISER
BROCK

BEARD
BLAKE
BROOKS

BEASLEY
BLAND
C. BROTHERS

FRANCES BARRETT

LAURA BATEMAN

SUE BATTE

EDITH BEARD

MARY FULLER BEASLEY

HELEN BELL

RUTH BENTON

Kinston, N. C.

Columbia, N. C.

Concord, N. C.

Charlotte, N. C.

Henderson, N. C.

Mooresville, N. C.

Elizabeth City, N. C.

CALEXA BROTHERS

INA BIEBIGEISER

CATHERINE BLAKE

FRANCES BLAND

MARY BONEY

SARAH BRISTOL

IDA BROCK

VIRGINIA BROOKS

Rocky Mount, N. C.

Reynolds, N. C.

Emerson, N. J.

Pittsboro, N. C.

Wilmington, N. C.

Statesville, N. C.

Elizabeth City, N. C.

Monroe, N. C.

1937 PINE NEEDLES

MARGARET BROTHERS	Rocky Mount, N. C.	JACQUELINE CAMERON	Lexington, N. C.
MARGUERITE BROWER	Siler City, N. C.	EDITH CARDWELL	Elk Park, N. C.
THELMA BRYAN	Roseboro, N. C.	CATHERINE CARPENTER	Cherryville, N. C.
SARAH BURDGE	Red Bank, N. J.	KATHERINE CAUSEY	Liberty, N. C.
BETTY CALDER	Springfield, Pa.	JANE CHADWICK	Schenectady, N. Y.
BERNICE CALLAHAN	Rutherfordton, N. C.	LUCILLE CHANDLER	Broadway, N. C.
HELEN CAMDEN	Lynchburg, Va.	HESTER CHRISMAN	Holcomb Rock, Va.
GERTRUDE CLARK		High Point, N. C.	



M. BROTHERS
CALLAHAN
CAUSEY

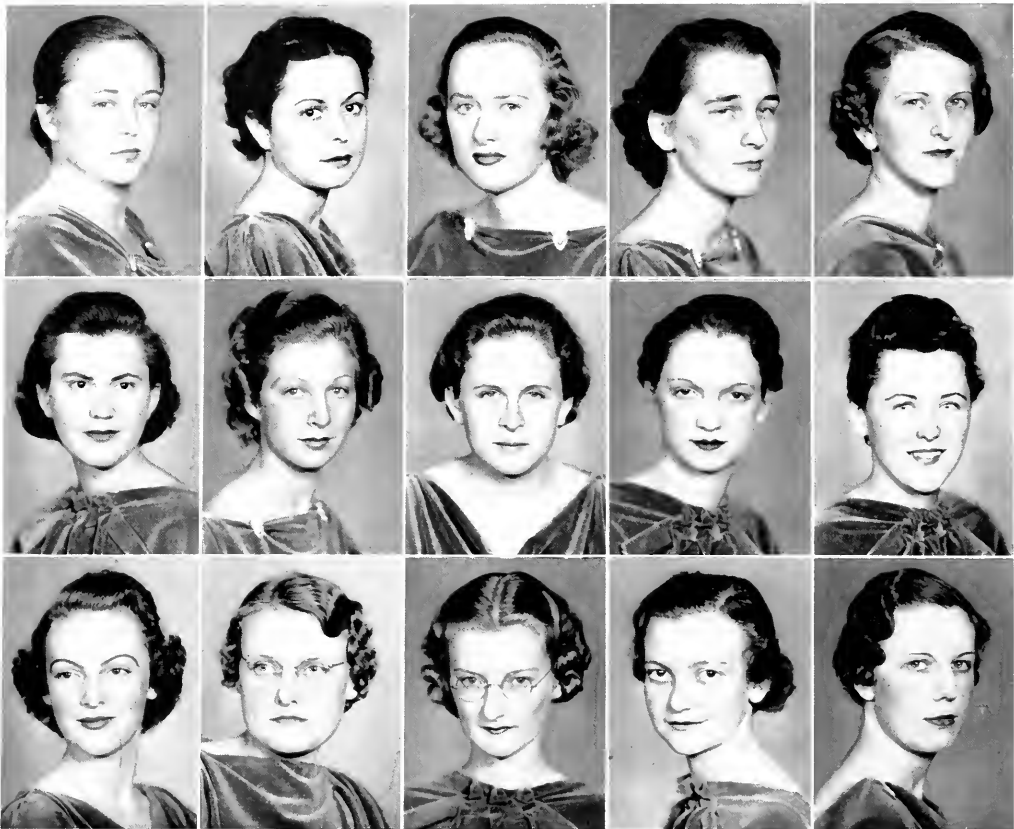
BROWER
CAMDEN
CHADWICK

BRYAN
CAMERON
CHANDLER

BURDGE
CARDWELL
CHRISMAN

CALDER
CARPENTER
CLARK

1937 PINE NEEDLES



CLAY
COOPER
CREECH

CLEIN
CORNELL
CRESSON

CLICK
COX
CROSLAND

COBURN
CRAVER
CRUMP

CONNOR
CREAN
CUMMINGS

ELIZABETH CLAY

Oxford, N. C.

GERALDINE COX

Robersonville, N. C.

REVIE CLEIN

Greensboro, N. C.

ALTA MAE CRAVER

Lexington, N. C.

SARAH CLICK

Elkin, N. C.

FRANCES CREAN

New Britain, Conn.

ROSINA COBURN

Raleigh, N. C.

DOROTHY CREECH

Smithfield, N. C.

EDWINA CONNOR

Chandler, N. C.

FAYE CRESSON

Lenoir, N. C.

KATHERINE COOPER

Raleigh, N. C.

ANNE CROSLAND

Bennettsville, S. C.

NETTIE CORNELL

Asheville, N. C.

SARAH CRUMP

Sunbury, N. C.

ELIZABETH CUMMINGS

High Point, N. C.

1937 PINE NEEDLES

FRANCES CUTHBERTSON	Monroe, N. C.	LEXA DAVIS	Youngsville, N. C.
BARBARA CUTHRELL	Goldsboro, N. C.	SLOCUMB DAVIS	Dunn, N. C.
FANNIE DANIEL	Wilson, N. C.	ISOLAND DEBOE	Greensboro, N. C.
LEWIS DAVIES	Augusta, Ga.	MARION DICKSON	High Point, N. C.
CATHERINE DAVIS	Charlotte, N. C.	ELIZABETH DOTGER	Charlotte, N. C.
ELIZABETH DAVIS	Pikeville, N. C.	EDNA DOUGLAS	High Point, N. C.
GRACE DAVIS	Tobaccoville, N. C.	JUDITH ELLER	Greensboro, N. C.
	LOUISE ELLER		Charlotte, N. C.



CUTHBERTSON
E. DAVIS
DICKSON

CUTHRELL
C. DAVIS
DOTGER

DANIEL
L. DAVIS
DOUGLAS

DAVIES
S. DAVIS
J. ELLER

C. DAVIS
DEBOE
L. ELLER

1937 PINE NEEDLES



ELLIOTT
FONDREN
GAMBLE

EUBANK
FOSTER
GARLAND

FARMER
FOWLER
GASKINS

FEIMSTER
FULTON
GATHINGS

FLEET
FULTZ
GIBSON

RUTH ELLIOTT

ELIZABETH EUBANK

LENNIS FARMER

BESS FEIMSTER

CATHERINE FLEET

DORIS FONDREN

HELEN FOSTER

Hertford, N. C.

Scots Hill, N. C.

Greensboro, N. C.

Newton, N. C.

Greensboro, N. C.

Greensboro, N. C.

Asheville, N. C.

HELEN GIBSON

MINNIE FOWLER

VIRGINIA FULTON

MARY FULTZ

EILEEN GAMBLE

BERNICE GARLAND

DOROTHY GASKINS

EDNA GATHINGS

Lumberton, N. C.

Hickory, N. C.

Walnut Cove, N. C.

Lexington, N. C.

Savannah, Ga.

Bakersville, N. C.

Asheville, N. C.

Pageland, S. C.

1937 PINE NEEDLES

RUTH GILL	Kittrell, N. C.	ALMA HALL	New Bern, N. C.
MARJORIE GLENN	Marion, N. C.	HELEN HALL	Woodsdale, N. C.
MIRIAM GOODRUM	Davidson, N. C.	VIRGINIA HALL	Oxford, N. C.
JEAN GRAHAM	Rowland, N. C.	EVELYN HAMMOND	Rowland, N. C.
BETTY GRIFFIN	Rocky Mount, N. C.	LOUISE HARRIS	Farmville, N. C.
HATTIE PEARL GRISSETTE	Valdese, N. C.	VIRGINIA HARRIS	Farmville, N. C.
CAROLINE HAGY	Imboden, Va.	VIRGINIA HARRISON	Williamston, N. C.
	SELMA HART		Norfolk, Va.



GILL
GRISSETTE
HAMMOND

GLENN
HAGY
L. HARRIS

GOODRUM
A. HALL
V. HARRIS

GRAHAM
H. HALL
HARRISON

GRIFFIN
V. HALL
HART

1937 Pine Needles



HASKINS
HENDERSON
HEWETT

HAYES
HENDRICK
HIGGSMITH

HEATH
HENDRIX
HOBBS

B. HEFFNER
HENRY
HODGES

M. HEFFNER
HERRING
HOFFMAN

ELIZABETH HASKINS

PIM HAYES

HARRIET HEATH

BERNICE HEFFNER

MARY HEFFNER

CRYSTAL HENDERSON

PATTIE HENDRICK

Summerfield, N. C.

Fremont, N. C.

Greensboro, N. C.

Maiden, N. C.

Hamlet, N. C.

Lumberton, N. C.

Norlina, N. C.

ESGLE HOFFMAN

MARGARET HENDRIX

ABBIE FAY HENRY

HAZEL HERRING

VIRGINIA HEWETT

JULIA HIGGSMITH

CONRADE HOBBS

MARTHA HODGES

Mount Airy, N. C.

Asheville, N. C.

Waynesville, N. C.

Goldsboro, N. C.

Wilmington, N. C.

Durham, N. C.

Sunbury, N. C.

Lexington, N. C.

1937 PINE NEEDLES

IRIS HOWELL	Troy, N. C.	JOSEPHINE JAMES	Purcellville, Va.
MARIE HUDNELL	Royal, N. C.	SARAH JARRETT	Andrews, N. C.
BETTY HUNT	Wilmington, N. C.	RUTH JENKINS	Franklinton, N. C.
RUTH IVEY	Mount Olive, N. C.	CAROLINE JOHNES	Freehold, N. J.
EDITH JACKSON	Franklinton, N. C.	CAMILLA JOHNSON	Siler City, N. C.
EVELYN JACKSON	Edenton, N. C.	ELIZABETH JOHNSON	North Wilkesboro, N. C.
LILLIAN JACKSON	Greensboro, N. C.	CLARICE JONES	Timberlake, N. C.
LOUISE JORDAN		Teaneck, N. J.	



HOWELL
EVELYN JACKSON
JOHNES

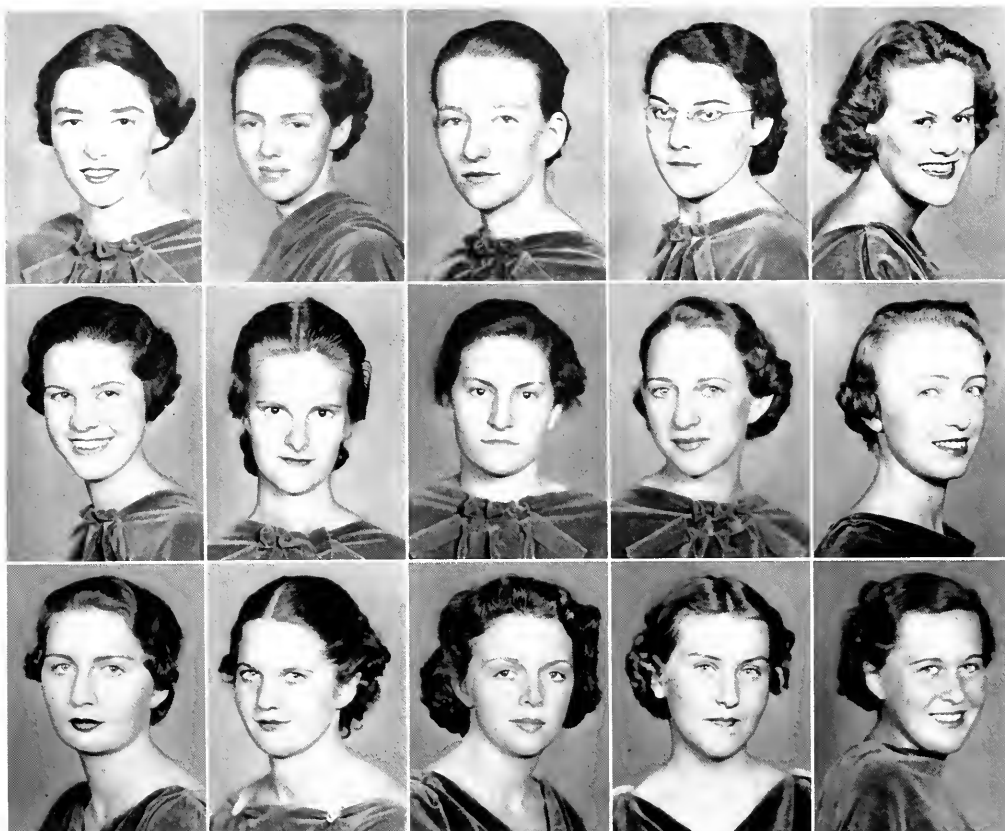
HUDNELL
LILLIAN JACKSON
C. JOHNSON

HUNT
JAMES
E. JOHNSON

IVEY
JARRETT
JONES

EDITH JACKSON
JENKINS
L. JORDAN

1937 PINE NEEDLES



M. JORDAN
KERNODLE
LANDEN

JUDD
KLEEMEIER
LANDRETH

KALLAM
KNOX
LASSITER

KATZ
KOEHLER
LAUDER

KINNEY
LAMBERTH
D. LEWIS

MARION JORDAN

Elizabethtown, N. C.

MILDRED KNOX

Bear Poplar, N. C.

FRANCES JUDD

Varina, N. C.

SELMA KOEHLER

Albien, Pa.

HANNAH KALLAM

Pleasant Gardens, N. C.

ALICE LAMBERTH

Jonesboro, N. C.

LILLIAN KATZ

Morganton, N. C.

KATHERINE LANDEN

Chinquapine, N. C.

MARJORIE KINNEY

Charlotte, N. C.

MARTHA LANDRETH

Greensboro, N. C.

EVELYN KERNODLE

Greensboro, N. C.

JEAN LASSITER

Spring Hope, N. C.

HELEN KLEEMEIER

Greensboro, N. C.

KATHLEEN LAUDER

Ruffin, N. C.

DOROTHY LEWIS

Asbury Park, N. J.

1937 PINE NEEDLES

HELEN LEWIS	Ransonville, N. C.	LOIS LOWDER	Winston-Salem, N. C.
MARGARET LEWIS	Wendell, N. C.	BLAIR LYLE	Keysville, Va.
ELIZABETH LILES	Garland, N. C.	BELLE MCBEE	Spruce Pine, N. C.
ELIZABETH LINK	Mount Pleasant, N. C.	NANCY MCCALL	Norton, Va.
MARTHA LOFTIN	Gastonia, N. C.	MYRTIE MCCASKILL	East Rockingham, N. C.
HORTENSE LONG	Tobaccoville, N. C.	VIRGINIA MCCHESENEY	Gastonia, N. C.
JULIA LOVELACE	Macclesfield, N. C.	JOYCE MCGLOHON	Grifton, N. C.
MONTIEN MCKAUGHAN		Greensboro, N. C.	



H. LEWIS
LONG
MCCALL

M. LEWIS
LOVELACE
MCCASKILL

LILES
LOWDER
MCCHESENEY

LINK
LYLE
MCGLOHON

LOFTIN
MCBEE
MCKAUGHAN

1937 PINE NEEDLES



McKEE
MASHBURN
MAUNEY

MacMULLIN
MASTERS
MAYER

McNEELY
G. MATTHEWS
MAYFIELD

MACKIE
J. MATTHEWS
MEERS

MEHLAFFEY
S. MATTHEWS
MEYEROWITZ

JANE McKEE

GWENDOLYN MacMULLIN

MARIE McNEELY

MILDRED MACKIE

MARGARET MEHLAFFEY

MILDRED MASHBURN

LELAH NELL MASTERS

Milwaukee, Wis.

Ramseur, N. C.

Greensboro, N. C.

Yadkinville, N. C.

Hickory, N. C.

Greensboro, N. C.

Greensboro, N. C.

GLADYS MEYEROWITZ

GERALDINE MATTHEWS

JANE MATTHEWS

SARA MATTHEWS

MARTHA MAUNEY

AGNES MAYER

KATHERINE MAYFIELD

VIRGINIA MEERS

Belhaven, N. C.

Durham, N. C.

Matthews, N. C.

Randleman, N. C.

Lincolnton, N. C.

Newberry, S. C.

Norlina, N. C.

Rocky Mount, N. C.

1937 PINE NEEDLES

MARY MIDDLETON	Walnut Cove, N. C.	FRANCES MOSELEY	La Crosse, Va.
LILLYAN MILLER	Concord, N. C.	JULIA MOSELEY	Kinston, N. C.
MARGARET MILLS	Scotland Neck, N. C.	MARIETTA MULLER	Dillon, S. C.
ARTHEALIA MITCHELL	Winston-Salem, N. C.	FRANCES MULLICAN	Walnut Cove, N. C.
ELIZABETH MOORE	Graham, N. C.	MARIE NEIKIRK	Charlotte, N. C.
MARTHA MOORE	Statesville, N. C.	NAN NORWINE	Flat River, Mo.
NAIOMA MOORE	Marshville, N. C.	RACHEL NYE	Fayetteville, N. C.
DOROTHY OLIVER		Marietta, N. C.	



MIDDLETON
M. MOORE
MULLICAN

MILLER
N. MOORE
NEIKIRK

MILLS
F. MOSELEY
NORWINE

MITCHELL
J. MOSELEY
NYE

E. MOORE
MULLER
OLIVER

1937 PINE NEEDLES



OLSEN
PEARSALL
PELLETIER

PAINE
PEDEN
PERSON

PALMER
PEEDIN
PHILLIPS

PARKER
A. PEELE
PINNER

PARKS
L. PEELE
PLONK

VIRGINIA OLSEN

ELEANOR PAINE

MARGARET PALMER

GRACE PARKER

FLORENCE PARKS

FLORA PEARSALL

ELIZABETH PEDEN

Chattanooga, Tenn.

Newport, Vermont

Charlotte, N. C.

Raeford, N. C.

Lenoir, N. C.

Greensboro, N. C.

Fayetteville, N. C.

DOUGLAS PLONK

GOLDA PEEDIN

ADELE PEELE

LINA JOE PEELE

MARY BARKER PELLETIER

HELENE PERSON

ELIZABETH PHILLIPS

HARRIET PINNER

Kings Mountain, N. C.

Selma, N. C.

Laurinburg, N. C.

Lewiston, N. C.

Mayesville, N. C.

Pikeville, N. C.

Spruce Pine, N. C.

Peak, S. C.

1937 PINE NEEDLES

HELEN POINTER	Blanche, N. C.	FRANCES REDFERN	Peachland, N. C.
ROSALIE POLK	Rockingham, N. C.	ELINOR REECE	Springfield, Mass.
EVELYN POLIAKOFF	Kinston, N. C.	ELIZABETH REEVES	Sanford, N. C.
ANNE PRICE	Spartanburg, S. C.	EDITH RITCHIE	Richfield, N. C.
YLLA PUIG	Greensboro, N. C.	CHLOE ROBERSON	Robersonville, N. C.
MELBA QUINN	Magnolia, N. C.	ELIZABETH ROBINSON	Matthews, N. C.
ELNORA RAIFF	Roxboro, N. C.	REBECCA ROGOL	Williston, S. C.
JULIA ROOT		Pittsfield, Mass.	



POINTER
QUINN
RITCHIE

POLK
RAIFF
ROBERSON

POLIAKOFF
REDFERN
ROBINSON

PRICE
REECE
ROGOL

PUIG
REEVES
ROOT

1937 PINE NEEDLES



ROSS
SHANKLE
SLOAN

ROTHACHER
C. SHAW
SLOOP

SAWYER
M. E. SHAW
D. SMITH

SCHMIDT
SIGMAN
J. SMITH

SETTE
SISK
V. SMITH

LYNDELL ROSS

Hamlet, N. C.

MARY ELIZABETH SHAW

Broadway, N. C.

VIVIAN ROTHACHER

Longmeadow, Mass.

KATHRYN SIGMAN

Newton, N. C.

NANCY HALL SAWYER

Elizabeth City, N. C.

ANNIE HOWARD SISK

Belmont, N. C.

ELAINE SCHMIDT

Plainfield, N. J.

MIRIAM SLOAN

Greensboro, N. C.

MARIE SETTE

Jackson Heights, N. Y.

ANNIE LOUISE SLOOP

Mt. Ulla, N. C.

MARY ELIZABETH SHANKLE

Mount Gilead, N. C.

DORIS SMITH

Kernersville, N. C.

CARLOTTA SHAW

Richlands, N. C.

JUANITA SMITH

Whiteville, N. C.

VIRGINIA SMITH

Greensboro, N. C.

1937 PINE NEEDLES

ALMEDA SNYDER	Winston-Salem, N. C.	HANNAH STEELE	Statesville, N. C.
ROSEMARY SNYDER	West Lawn, Pa.	GWEN STEGALL	Marshville, N. C.
FRANCES SOWELL	Greensboro, N. C.	SARAH STEWART	Pinehurst, N. C.
LUCY SPINKS	Raleigh, N. C.	LORENA STROHM	Annapolis, Md.
ANNIE LEE SPOON	Burlington, N. C.	EDITH SURRETT	Warsaw, N. C.
ELIZABETH STARNES	Washington, D. C.	MARGARET SWAIN	Creswell, N. C.
SARA STEAGALL	Maruen, N. C.	SUSAN SWETT	Southern Pines, N. C.
ANNABELLE TART		Dunn, N. C.	



A. SNYDER
STARNES
STROHM

R. SNYDER
STEAGALL
SURRETT

SOWELL
STEELE
SWAIN

SPINKS
STEGALL
SWETT

SPOON
STEWART
TART

1937 PINE NEEDLES



TATUM
TYSON
WATTS

THOMPSON
UZZELLE
WESTCOTT

THOMPSON
WALTERS
WHALIN

TOLER
A. WATKINS
WHITE

TRUITT
P. WATKINS
WHITEHURST

VIRGINIA TATUM
KATHRYN THOMPSON
BARBARA THOMPSON
DOROTHY TOLER
FRANCES TRUITT
MARGARET TYSON
ELIZABETH UZZELLE

Raleigh, N. C.
Richmond, Va.
Spartanburg, S. C.
Rocky Mount, N. C.
Greensboro, N. C.
Georgetown, S. C.
Durham, N. C.
MARGARET WHITEHURST

ALICE WALTERS
ALYNE WATKINS
PENELOPE WATKINS
EDITH WATTS
RUTH WESTCOTT
RUTH WHALIN
MARGARET WHITE
New Bern, N. C.

Greensboro, N. C.
Andrews, N. C.
Henderson, N. C.
Huntington, N. Y.
Annapolis, Md.
Middleboro, Ky.
Durham, N. C.

1937 PINE NEEDLES

MARY WHITLEY	Blount's Creek, N. C.	LOETTA WILLIS	Greensboro, N. C.
JOSEPHINE WILEY	Charlotte, N. C.	HELEN WILSON	Lynwood, N. C.
MAY STEVENS WILEY	Bryn Mawr, Pa.	JUNE WILSON	Wanamassa, N. J.
NELLIE WILLETTS	Winnabow, N. C.	VIRGINIA WILSON	Asheville, N. C.
CHARLOTTE WILLIAMS	Faison, N. C.	LOUISE WINGATE	Charlotte, N. C.
HELEN WILLIAMS	Kings Mountain, N. C.	MARY WITHERS	Davidson, N. C.
MARY WILLIAMSON	Turkey, N. C.	WILMA WOLFE	Swannanoa, N. C.
FRANCES WOMBLE		Greensboro, N. C.	



WHITLEY
H. WILLIAMS
V. WILSON

J. WILEY
WILLIAMSON
WINGATE

S. WILEY
WILLIS
WITHERS

WILLETTS
H. WILSON
WOLFE

C. WILLIAMS
J. WILSON
WOMBLE

1937 PINE NEEDLES



WOOLARD

WORMSER

YERGER

YOUNG

ZEOCK

RACHEL WOOLARD

Rocky Mount, N. C.

FRANCES YERGER

Shoemakersville, Pa.

ADRIENNE WORMSER

New York, N. Y.

NANCY YOUNG

Newton, N. C.

HELEN ZEOCK

Mt. Penna, Pa.



SOPHOMORES



SOPHOMORE CLASS

OFFICERS

EMILY HARRIS
President of Sophomore Class

MARY ELLEN HARRISON
Vice-President

ELIZABETH SNYDER
Secretary

DOROTHY ROSSELAND
Treasurer



HARRIS



DRAPER



TEAGUE

MISS BERNICE DRAPER
Chairman of Sophomore Class

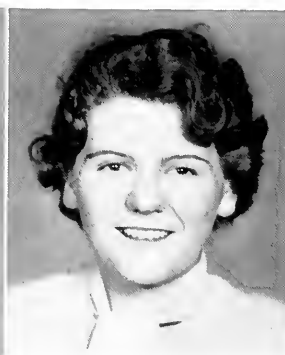
HAMPTON TEAGUE
Mascot of Sophomore Class



HARRISON

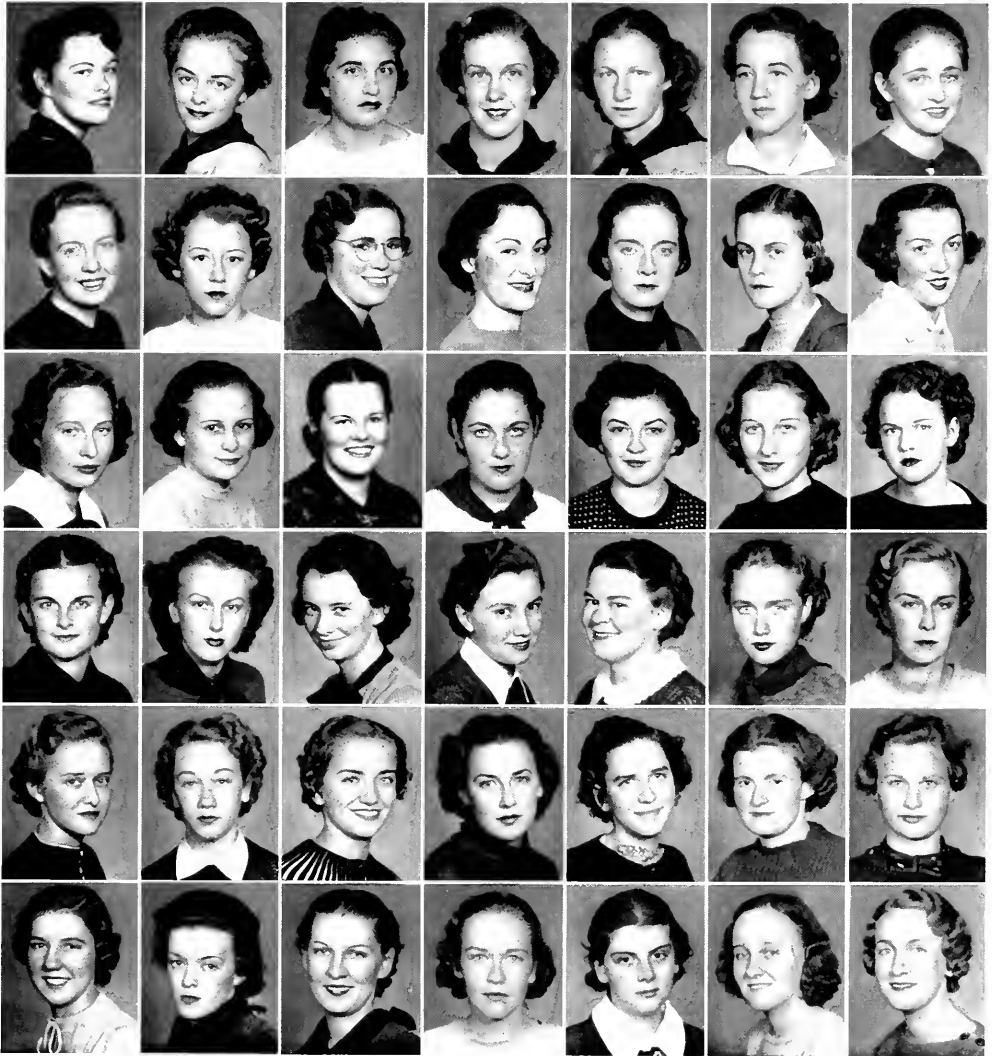


SNYDER



ROSSELAND

1937 PINE NEEDLES



First row: ADAMS, ALBRIGHT, ALDRICH, ALLEN, ALTSHULER, ANDOE, ANDREWS.

Second row: ANTHONY, ADKINSON, AUSTIN, AYCOCK, BAILLIE, BAIN, BANKS.

Third row: BARKSDALE, BARNES, BEMAN, BECK, BERGER, BERNARD, BEST.

Fourth row: BETHEA, BIZZELL, BLADES, BLANCHARD, BALDERSON, BOLLING, BONHAM.

Fifth row: BOOK, BOSTICK, BOWMAN, BRABBLE, BRADLEY, BRANTON, BRICK.

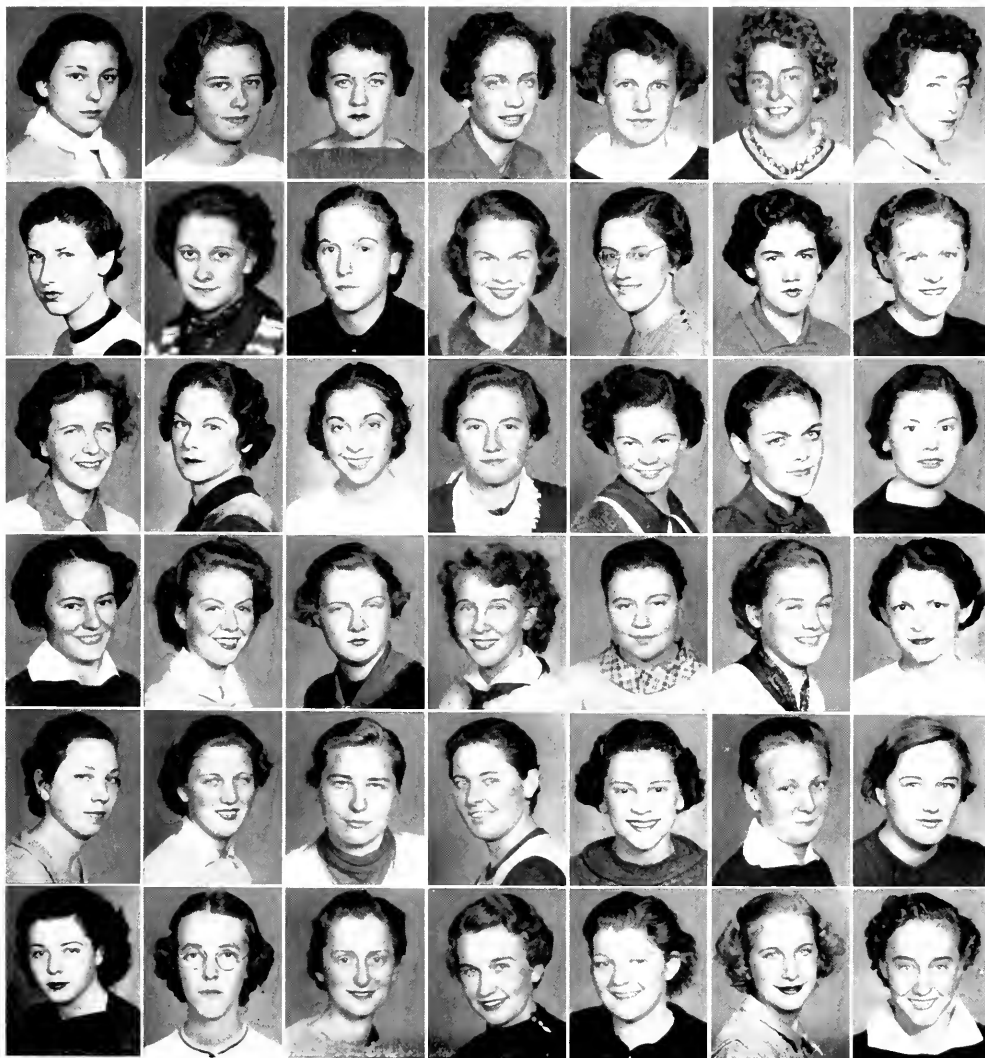
Sixth row: BRINKLEY, E. BROWN, M. E. BROWN, BUCILANAN, BUNCH, BUNDY, BYLERLY.

1937 PINE NEEDLES



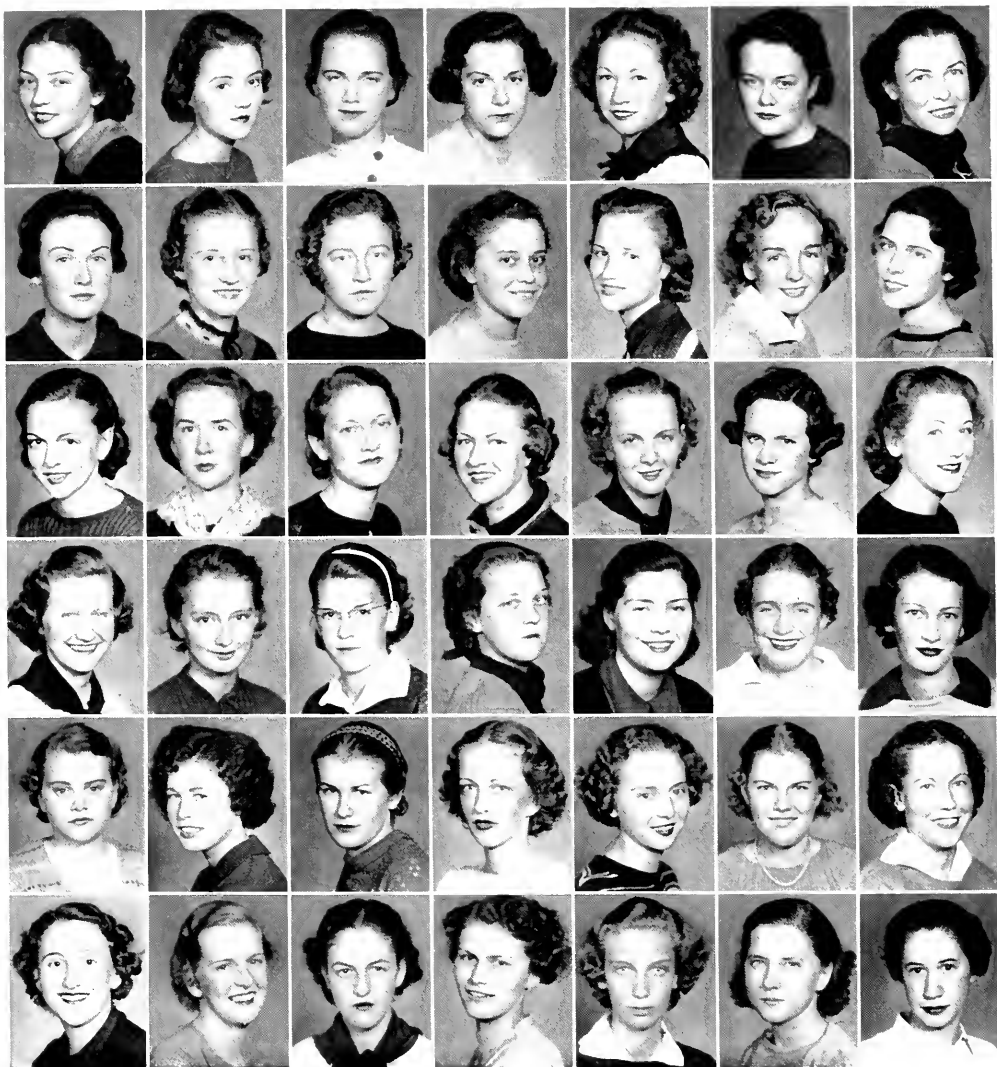
First row: BURDGE, BURFORD, BURNSIDE, CALDWELL, CALLAHAN, CARTER, CANNON,
Second row: CAREY, CARROTHERS, CARTWRIGHT, CARTHREN, CHAMBLER, CHAMBERS, CLICK,
Third row: CLINE, COCHRANE, COLE, CONSTABLE, COOKE, CAUGHEN AM, COWHERD,
Fourth row: COYKENDALL, CROFT, CRAWFORD, CROCKETT, CROWELL, CRUMPLER, CURRIN,
Fifth row: DALE, N. DANIELS, E. DANIELS, L. DARDEN, M. DARDEN, DEES, DELBRIDGE,
Sixth row: DENNIS, DIBBLE, DOZIER, DRAUGHTON, DUKES, DUNLAP, DUPUY.

1937 PINE NEEDLES



First row: DZVONCHIK, M. L. EDWARDS, V. EDWARDS, ELEY, ELKINS, ENNETT, ENDFIELD.
Second row: EPDS, B. EVERETT, J. EVERETT, M. EVERETT, FAIRBANKS, FEUTRESS, FIELDS.
Third row: FICKER, FINCHER, FINKLESTEIN, FISHER, FLOWERS, FLOYD, FOY.
Fourth row: FREELAND, FURR, GALBREATH, GALLAWAY, GARNER, GAULT, GILL.
Fifth row: GILLIAM, GODWIN, GRADECK, GRAY, GREENBURG, GREEN, GYLES.
Sixth row: HAFFER, HAYNES, HALL, HAMILTON, HARGETT, HARGROVE, HARRIS.

1937 PINE NEEDLES



First row: HARRISON, HARWARD, HEIDINGER, HELD, HELMS, E. HENDERSON, H. HENDERSON.

Second row: M. HENDERSON, HEWITT, L. HILL, M. HILL, HOBBS, HORGOOD, HOBSON.

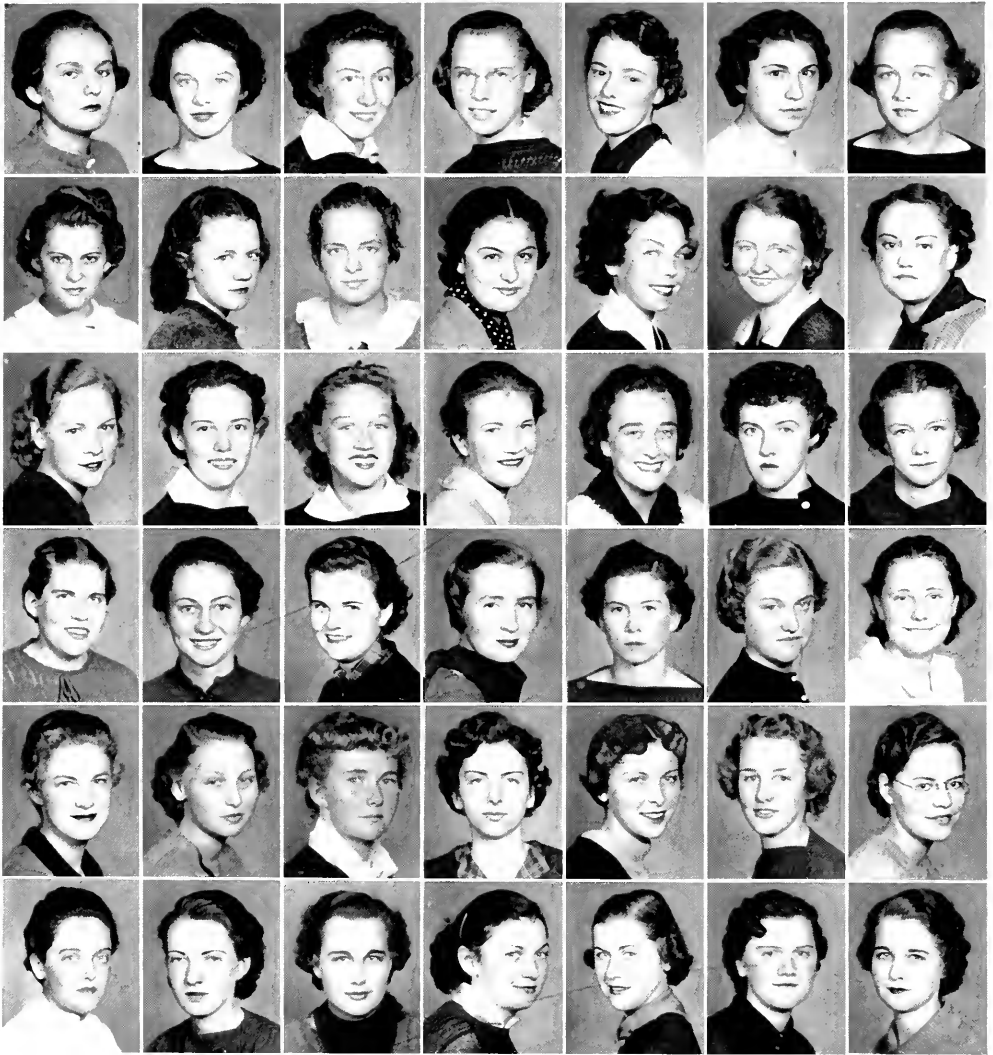
Third row: HOLLAND, HOLMES, HORN, HORNADAY, HORNER, HOWARD, HOWELL.

Fourth row: HUST, HURDLE, D. HUTCHINSON, L. HUTCHINSON, IDAL, IRWIN, JAMES.

Fifth row: D. JOHNSON, M. M. JOHNSON, M. JONES, S. JONES, JORDAN, JOSEY, JOYNER.

Sixth row: KAPLAN, KEISTER, KELLER, KERCHNER, KIKER, KING, KOHLER.

1937 PINE NEEDLES



First row: KOLMAN, KOONCE, KORNGAY, A. LANIER, E. LANIER, LA SPENA, LAWS.
Second row: LEACH, LEE, LEONARD, E. LEVINE, W. LEVINE, CAROLINE LEWIS, CLAUDALINE LEWIS.
Third row: LILES, LINDSAY, LIPE, LITTLE, LITTLEFIELD, LIVINGSTON, LLOYD.
Fourth row: LAPP, LOVE, LAWRANCE, LUCAS, McADAMS, McALLISTER, McBRAVER.
Fifth row: McCABE, McLAUGHLIN, McCLAIN, McKNIGHT, McLEAN, McLENDON, McMANAWAY.
Sixth row: McMILAN, MAGUIRE, MALLONEE, MANGET, MANN, MARSTON, MARTIN.

1937 PINE NEEDLES



First row: MARSHBURN, MAUPIN, MERRITT, MEWBORN, MURBORN, MICHAEL, MICHLIN.

Second row: MILES, MIMS, MITCHELL, MOON, A. MOORE, B. MOORE, C. MOSELEY.

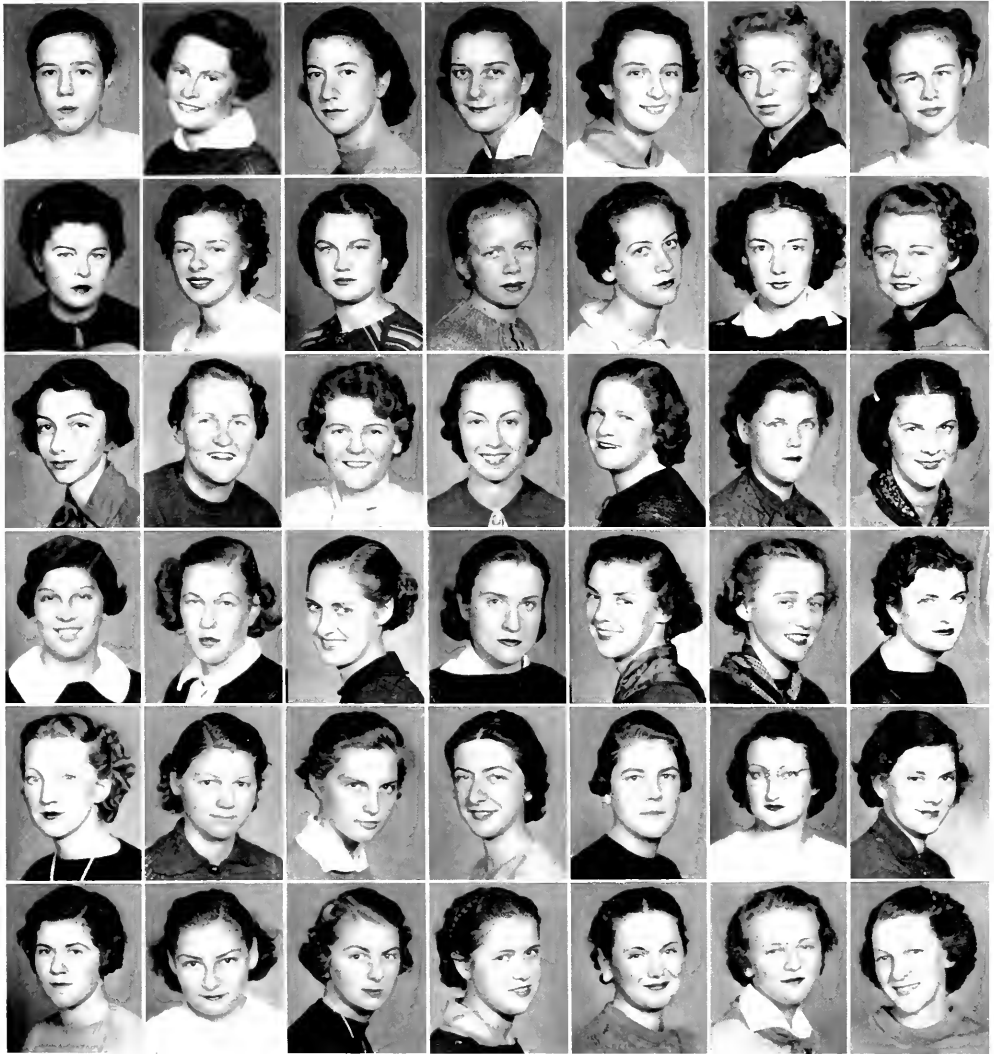
Third row: M. MOSELEY, MOSELEY, MURDOCK, MURPHY, B. MEYERS, R. MEYERS, NEWSOME.

Fourth row: NIBLOCK, NORWOOD, NOWELL, ORMOND, OVERMAN, OWEN, E. PARKER.

Fifth row: M. PARKER, R. PARKER, PATRICK, PATTERSON, PEARSON, PEASE, PELTON.

Sixth row: B. PHILLIPS, E. PHILLIPS, M. PHILLIPS, PLATT, PINNIX, POSPISIL, PLAYER.

1937 PINE NEEDLES



First row: POWELL, POYNOR, PRINDLE, PURVIS, PUTNAM, PYEN, QUINN.

Second row: RAY, REAGAN, REAVIS, REHM, RETLEU, RICHARDSON, ROBERTSON.

Third row: ROBINSON, ROGERS, ROSSELAND, ROSENTHAL, RETHA, RUDD, SAGE.

Fourth row: SEIBERT, SUNDSTROM, SELLERS, L. SHARP, B. SHARPE, G. SHARPE, SHAW.

Fifth row: SHEAKEN, SHOAF, SHEPARD, SILBIGER, SHUFORD, SIMPSON, M. SMITH.

Sixth row: P. SMITH, SMITHERMAN, E. SYNDER, H. SYNDER, SOUTHARD, SPAINHOUR, SPRULL.

1937 PINE NEEDLES



First row: STANLEY, E. STANTON, M. STANTON, STEELE, STEPHENS, STOKER, STRAWN.
Second row: STURKEY, SUITT, SWAIN, TAPLIN, B. E. TAYLOR, J. TAYLOR, M. E. TAYLOR.
Third row: TEAGUE, THOMAS, K. THOMASON, M. THOMASON, TOLAR, TRIMBLE, TRIPP.
Fourth row: TRUESDELL, TRUITT, TURBEVILLE, TURNER, TOUTEN, TYLER, TYNDALE.
Fifth row: D. TYSON, N. TYSON, UMSTEAD, UPTCHURCH, VANN, VEASEY, VENNING.
Sixth row: HAZEL WALKER, HILDA WALKER, WARREN, WATSON, WATTS, WEEKS, WESTBROOK

1937 PINE NEEDLES



First row: WESTCOTT, WHARTON, WHITTAKER, WHITEHEAD, WHITLEY, WIGGINS, E. WILKINSON.

Second row: E. P. WILKINSON, WINKENSON, WILLIAMS, WILSON, WINBOURNE, WINSLOW, WOLFE.

Third row: WOODSON, A. WRIGHT, M. WRIGHT, ZIEL.

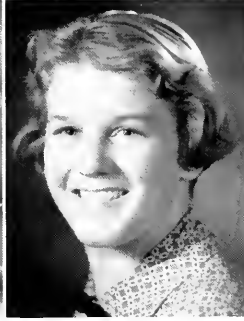
1937 PINE NEEDLES



PAINTER



SCHAEFER



SUITER



CHANGARIS

FRESHMAN CLASS

MR. JAMES PAINTER
Chairman of Freshman Class

OFFICERS

SOPHIE SCHAEFER
ALICE SUITER
CHRISTINE CHANGARIS
CELIA HALL

President
Vice-President
Secretary
Treasurer

Abel, Anna
Abernethy, Margaret
Adams, Martha
Adams, Pearl
Akers, Ann
Alexander, Janet
Allen, Jane
Allen, Janet
Alverson, Virginia
Ambrose, Virginia
Ammons, Bertha
Anderson, Blanche
Anderson, Rebecca
Anderson, Sarah
Andrews, Jeanne
Anthony, Christine
Armstrong, Jeannette
Ashby, Leticia
Atkinson, Tula Nell
Austin, Sarah

Avery, Emma Sharpe
Backer, Edith
Baer, Rosa
Bailey, Leopla
Baldridge, Frances
Baldwin, Mary
Balance, Aldena
Barfoot, Anna Jean
Barksdale, Beverly
Barnes, Lois
Barnes, Sarah
Barnwell, Ruth
Belinkoff, Harriet
Bell, Dorothy
Bell, Eleanor
Benton, Margaret
Benton, Nell
Berliner, Miriam
Biederman, Esther
Bissette, Camilla

Black, Kate
Black, Margaret
Blackwelder, Dorothy
Blair, Elizabeth
Boaz, Betty Lou
Boger, Virginia
Boles, Pauline
Bornstein, Ruth
Bourne, Elizabeth
Bowman, Phyllis
Bryette, Charlotte
Bradford, Jane
Brady, Hilda
Branie, Hazel
Brawley, Nan Lynn
Breckenridge, Jean
Bretney, Dorothy
Buckhouse, Myra
Briggs, Olive
Bright, Rachel

Britt, Dorothy
Britten, Kathryn
Brock, Dorothy
Broit, Mary Evelyn
Bronson, Mary Jean
Brooks, Geraldine
Brooks, Lucille
Brothers, Dorothy
Broughton, Elizabeth
Brown, Barbara
Brown, Dorothy
Brown, Marjorie
Brown, Martha
Brown, Mary Betty
Browne, Nancy
Budd, Mary Dell
Bundy, Eleanor
Burns, Betty
Burrows, Rachel
Busch, Eleanor

Byerly, Helen
Caddell, Mable
Caldwell, Frances L.
Carlton, Mary
Carmen, Joy
Caroon, Elicia
Carter, Ruth
Cecil, Virginia
Cely, Jean
Chadwick, Ruth
Chaffee, Margaret
Chaffin, Helen
Chamblee, Joyce
Chamness, Daisy
Chance, Virginia
Changaris, Christina
Childs, Annette
Church, Elizabeth
Clark, Elizabeth
Clark, Marguerite

Clegg, Christine
Clem, Bernice
Clifton, Louise
Clatts, Betty
Cobb, Evelyn
Coben, Helen
Coleman, Mildred
Coley, Dorothy
Coley, Mary
Conking, Louise
Connor, Virginia
Cooke, Maureen
Cooney, Jean
Covington, Marie
Cox, Dorothy
Cox, Marian
Coykendall, Muriel
Craft, Louise
Cratt, Pauline
Craver, Virginia



1937 PINE NEEDLES

- | | | | | | | |
|----------------------|---------------------|---------------------|-----------------------|----------------------|-----------------------|------------------------|
| Crawley, Irene | Gay, Mary Taylor | Herring, Jane | Lassiter, Mary | Morrison, Mary G. | Rives, Mary Irma | Summers, Ruth |
| Crook, Carolyn | Gaylord, Virginia | Hewitt, Lillian | Lathrop, Ruth | Moss, Margaret | Roberson, Eloise | Sundstrom, Sylvia |
| Crookes, Amy | Gentles, Avril | Ileyward, Betsy | Lecreiner, Elizabeth | Moss, Lynette | Robinson, Elaine | Sutton, Elizabeth |
| Croom, Leah | Gilbert, Rebecca | Higgins, Mary | Lewis, Elizabeth | Moss, Ruth | Roeg, Blanche | Sutton, Mary Page |
| Crotty, Ruth | Gilkeson, Helen | Hill, Lula Kate | Lewis, Helen | Mueller, Annie | Rogers, Geraldine | Sutton, Mary Ruth |
| Cashwa, Annette | Gillam, Bessie | Hobson, Jean | Lisk, Ruth | Mue, Elsie | Rogers, Virginia | Swanson, Marjorie |
| Cuthrell, Barbara | Gilliland, Jane | Holman, Kathryn | Lohr, Mabel | Munday, Sue | Rose, Annie Lea | Sweeney, Sue |
| Caniell, Edith | Gillmore, Alta | Holmes, Mary | Londoner, Esther | Murphy, Mary E. | Rosenbaum, Miriam | Sykes, Pearl Lindley |
| Darden, Gertrude | Gillmore, Ruth | Hornor, Eleanor | Lopp, Sarah | Nachman, Ruth | Ross, Eleanor | Talley, Alice |
| Davenport, Florence | Glaser, Lonette | Horton, Blanche | Love, Bobby Jean | Nelson, Lillian | Ross, Rebecca | Talley, Rebecca |
| Davidson, May | Godby, Maurine | Hourwitz, Evelyn | Lovell, Dorothy | New, Doris | Rudd, Edith | Tandy, Betty Lloyd |
| Davis, Cornell | Goldman, Myrtle | Howard, Betsy | Loving, Grace E. | Newsome, Ernestine | Rudd, Mary Dell | Tates, Nettie |
| Davis, Grace | Goodsmith, Helen | Howard, Carol | Lyerly, Elizabeth | Noel, Jean | Ruddy, Mary Sue | Taylor, Margaret |
| Davis, Louise | Goodnight, Ethelene | Howard, Elinor | Lyons, Virginia | Nolen, Lorene | Russell, Marguerite | Teague, Edna Louise |
| Dayson, Elizabeth | Goodwin, Esther | Howard, Genevieve | McAlister, Nancy | O'Keil, Marion | Saltman, Kathryn | Thomas, Eleanor |
| Dawson, Katherine | Gordian, Katherine | Howell, Evelyn | McArthur, Elisabeth | Oveman, Mary | Sanders, Elsyn | Thompson, Elsie |
| Day, Mary | Gordan, Margaret | Howell, Virginia | McBane, Margaret | Oveman, Mary | Schoefer, Sophie | Thornton, Jeannette |
| DeBoos, Marjorie | Jose, Josephine | Hoyle, Jeanne | McBride, Rebekah | Owens, Boyd | Schoellkopf, Dorothy | Tillghast, Anne |
| DeGroot, Marian | Goslen, Annie Maud | Hudson, Louise | McBryde, Kathleen | Pagan, Thelma | Schoen, Betty | Tingle, Nellie |
| Dennis, Dorothy | Gond, Marie | Hugg, Barbara | McBryde, Mary | Palmer, Eleanor | Schultz, Madelyn | Toler, Margaret |
| DeVault, Lena | Gradecck, Viola | Huffaker, Ethyl | McCollum, Marguerite | Palmer, Isabel | Scott, Cora Lea | Tomlinson, Dorothea |
| Dewey, Jean | Graham, Agnes | Hughes, Claire | McDaniels, Elizabeth | Palmer, Ruth | Scott, Edna | Tomlinson, Eileen |
| Dickinson, Marjorie | Gray, Anne | Hughes, Mary F. | McDonald, Sarah | Pardo, Sarah | Seren, Robbie | Tomlinson, Mildred |
| Dickson, Carmelita | Gray, Eula | Hughes, Mary L. | McDowell, Alice | Pardue, Clara | Sears, Harrie | Tucker, Naomi |
| Dimmette, Marie | Gray, Margaret G. | Hunnicut, Elizabeth | McEaden, Lena | Parker, Oma Lee | Seawell, Sara Frances | Tupper, Joyce |
| D'Lugin, Evelyn | Greenwood, Shirley | Hunt, Barbara | McGalliard, Anne | Parkman, Jane | Sears, Ruth | Turner, Edith |
| Doggett, Talulah | Greeson, Evelyn | Hunt, Elizabeth | McIver, Hazel | Parks, Lucille | Sharp, Carrie E. | Turner, Estelle |
| Dowd, Carolyn | Griffin, Alta | Hunter, Virginia | McKee, Jo Ann | Patterson, Dorothy | Shaw, Florence | Twitty, Bess |
| Dunlap, Roberta | Griffin, Clela | Hutchinson, Barbara | McKnight, Katherine | Payne, Mertle | Shell, Winifred | Uhl, Barbara |
| Dunlap, Winifred | Griffin, Ellen | Hutchison, Mary L. | McLean, Barbara | Pearson, Minora | Sheppard, Sarah | Usher, Alma |
| Dunn, Nancy | Griffin, Katharine | Imberman, Ruth | McLean, Martha | Pegram, Dorothy | Sherard, Adell | Vance, Josephine |
| Dunn, Selma | Grimes, Gertrude | Ingram, Frances | McLean, Rosemary | Pendleton, Alice | Sherrill, Ann | Vinson, Julia |
| Durham, Celia | Grodin, Beverly | Jackson, Henrietta | McMillan, Annie K. | Penland, Pauline | Sherron, Corrina | Walton, Frances |
| Dyonchik, Nadia | Gronet, Janet | Johnson, Merla | McMillen, Peggy | Person, Anne | Shoaf, Charlotte | Warren, Florence |
| Edgerton, Sara | Grubbs, Elizabeth | Jones, Annie Vivian | McNeill, Emma King | Pertain, Dorothy | Shuford, Inez | Watson, Mary Lane |
| Edwards, Elizabeth | Guy, Betty | Kanipe, Dorothy | McNeill, Margaret E. | Pettigrew, Elizabeth | Sigman, Patricia | Way, Virginia |
| Edwards, Frances | Guyer, Lois | Kaulback, Helen | McNeill, Marion | Pettigrew, Genevieve | Simmons, Mary | Weeks, Mary Alice |
| Edwards, Virginia L. | Hackney, Frances | Kaulback, Shirley | McNeill, Theresa | Pike, Anne | Sircom, Alice | Weinger, Ruth |
| Efrid, Wilhelmina | Hall, Celia | Kearns, Mary Wade | McNisen, Mary | Piner, Marion | Smith, Annie | Wellington, Ruth |
| Efland, Maxine | Hall, Frances | Keller, Sara | McKee, Mary Lou | Pittman, Thelma | Smith, Edith | Westmoreland, Joyce |
| Eley, Anne | Hall, Sarah | Kellogg, Josephine | Mabery, Margaret E. | Plonk, Martha | Smith, Eloise | White, Elizabeth |
| Ellington, Mary | Ham, Nancy | Kelly, Martha | Manget, Martha | Pope, Follie | Smith, Erma | White, Emily |
| Ellis, Elizabeth | Hammond, Angela | Kendall, Margaret | Mann, Lillian | Pope, Ruth | Smith, Evelyn | White, Genevieve |
| Ellis, Grace | Hammond, Thelma | Kenette, Margaret | Marks, Dorothy | Porter, Lois | Smith, Juanita | Whiteside, Sara |
| English, Katherine | Hardee, Roberta | King, Eunice | Marks, Jennie | Potter, Kathleen | Smith, Mabel | Whitley, Helen |
| Esfan, Mae | Harding, Grace | King, Martha Gene | Marshburn, Christine | Powell, Valerie | Smith, Manie Grace | Whitley, Kathryn |
| Evans, Margaret | Harding, Sonia | Kinlaw, Dora | Martin, Catherine | Powers, Mary E. | Smith, Margaret | Wilkinson, Virginia |
| Fason, Margery | Hardwicke, Pauline | Kinlaw, Dovie | Martin, Martha Lee | Prestwood, Martha | Smyth, Beatrice | Willets, Nellie |
| Farmer, Margaret | Harloe, Eleanor | Kinney, Marjory | Matheson, Deane | Prine, Alta | Snow, Ella | Williams, Audrey |
| Fick, Florence | Harrell, Miriam | Kinsey, Eugenia | Matlock, Ora C. | Pruden, Marilyn | Snow, Thelma | Williams, Dorothy |
| Fields, Pauline | Harvey, Jeannette | Kirkman, Ruth | Mathews, Dorothea | Pully, Rose | Snowden, Marleine | Williams, Joan |
| Fincher, Frances | Hartley, Frances | Kirstein, Alma | Mathews, Louise | Purdy, Roberta | Snyder, Hilda | Williamson, Myrtle |
| Finkelstein, Paulyne | Hartman, Margaret | Kiser, Frances | Maye, Laura Love | Qua, Muriel | Spradling, Louise | Wilson, June |
| Fisher, Marian E. | Hartsook, Jean | Klein, Jennie | Meroney, Louise | Railey, Anna | Speros, Helen | Wimbish, Christine |
| Fisher, Virginia | Harward, Frances | Knox, Annie Lee | Meyers, Elaine | Rappoport, Rosalie | Sprull, Mary Jane | Winslow, Packy |
| Flanagan, Elsie | Haugh, Mildred | Koehler, Dorothy | Miller, Frances | Rarden, Jane | Sprull, Sara | Wise, Betty |
| Flanagan, Helen | Hawkins, Mary F. | Koonce, Annie L. | Miller, Lucile | Rash, Jane | Sprull, Virginia | Wolfe, Elizabeth |
| Forester, Helen | Hayes, Bernice | Koonce, Mary | Miller, Mary Beatrice | Ray, Florine | Suttes, Mebe | Wolfsom, Minna |
| Fox, Anne | Hayes, Ellen | Kornblut, Esther | Miller, Millicent | Redding, Mary | Stanton, Catharine | Worthington, Nannie L. |
| Free, Mildred | Hayman, Beatrice | Krall, Margaret | Mims, Charlotte | Redmond, Mary C. | Staton, Maude | Wrem, Kathryn |
| Fretz, Ruth | Hege, Mary Ellen | Krug, Natalie | Mitchell, Joan | Reed, Nola | Sterling, Virginia | Wright, Catherine |
| Frye, Mary Ruth | Held, Fannette | Lahn, Muriel | Mize, Martha | Reynolds, Helen | Stevens, Altha | Wright, Glanmore |
| Fuller, Juba | Hemshill, Emma | Lamm, Kate | Moore, Mary Byrd | Rhodes, Bessie | Stevenson, Evelyn | Wunsch, Evelyn |
| Fuller, Kathryn | Hendryx, Dorothy | Land, Jessie | Moore, Nell | Riback, Janice | Stine, Arthur | Wyate, Margaret |
| Gallagher, Marjorie | Henley, Dorothy | Lane, Virginia | Moose, Ellen | Richardson, Edna E. | Straus, Anita | Wygant, Helen |
| Galloway, Marion | Henry, Lois | Lansche, Josephine | Morgan, Elizabeth | Richardson, Helen | Stringfield, Thomasin | Yates, Nancy |
| Gahmbeck, Phyllis | Herbert, Dorothy | Lansche, Margaret | Morgan, Ruby | Richardson, Margaret | Suiter, Alice | Zertson, Paola |
| Gatling, Nina | Herring, Eloise | LaSpina, Jenty | Morris, Ruby | Ritter, Virginia | Suitt, Edna | Ziel, Jean |



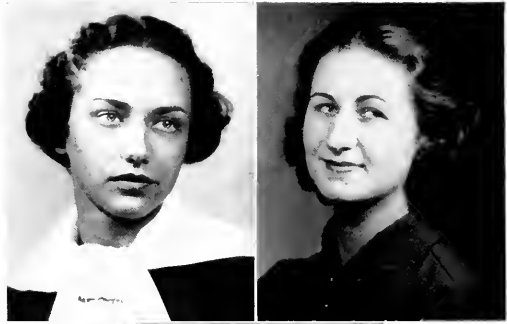
COMMERCIAL CLASS

OFFICERS

DORIS ELEY
President

MARGARET SCOTT
Vice-President

GEORGE M. JOYCE, B.S., M.S.
Director



ELEY

JOYCE

SCOTT



1937 Pine Needles

ALSPAUGH, ANNIE HILL
 ARCHIBALD, KATHERINE
 BALSLEY, DOROTHY S.
 BAND, LORRAINE
 BAREFOOT, JOSAPHINE
 BEALE, FRANCES ADELIA
 BELL, ADDA C.
 BENDER, BERTHA LENA
 BENNETT, JULIA H.
 BENTON, MILDRED
 BERBERT, FRANCES
 BERGEN, ALICE SHEILA
 BETTS, CAROL
 BISHOP, ELIZABETH
 BISHOP, MARION
 BLAND, MARGARET
 BLAND, MEVIS
 BLANTON, KATHRYN
 BOBBITT, MARY ELEANOR
 BOGER, MYRTLE E.
 BONDURANT, LUCY
 BOSTIAN, ALICE VIRGINIA
 BOYD, ESTHER EARLE
 BRADLEY, FANNIE
 BRENNER, BESSIE
 BRIGGS, MARGARET
 BRITTON, MARTHA
 BROOKS, LUCY NEAL
 BROOKS, NELLIE
 BROWN, MARY ANNA
 BROWN, REBECCA
 BRYAN, MAUDE JOHNSON
 BULLUCK, MAVIS L.
 BURCH, ESTHER
 BURGESS, SADIE
 CALVERT, ANGELENE
 CANSLER, MILDRED
 CANTEY, CAROLYN
 CARR, MILDRED
 CARTER, MILLIE
 CASSTEVENS, ANNE
 CHEEK, MARTHA
 CHEEK, MARY HELEN
 CLARK, ANNA RUTH
 CLARK, JENNIE
 CLARK, MARY EVERETT
 CLYMER, DOROTHY MAY
 COATS, MARY LOUISE

COCHRANE, ELLA F.
 COLHARD, DOROTHY
 CONNELL, RUBY
 COOKE, CHRISTINE
 COOKE, SARAH
 COON, HELEN VIRGINIA
 COOPER, MARJORY L.
 CORNWELL, MARGARET
 CORRELL, ELIZABETH
 COX, BLAIR
 CRAGAN, MARY C.
 CRAWFORD, MARY
 CURRIN, MARY HELEN
 CUTHRELL, EUNICE
 DAVIS, ETHEL
 DAWSON, DOROTHY M.
 DEAL, LOUISE
 DECKER, MURIEL
 DONALDSON, MARY O.
 DRISCOLL, ROSSIE E.
 EDMONDSON, VERA
 ELEV, DORIS CARR
 ELLIS, NANCY BURWELL
 ELMORE, KATE DUNN
 EUTSLER, SARAH J.
 FARLOW, WILMA
 FIELDS, MAURINE
 FITZGERALD, GAY
 FLOWERS, HELEN J.
 FLOYD, REBECCA
 FLYNT, MARTHA LOUISE
 FORT, MARGARET C.
 FREDERICKS, ADNA R.
 GAY, MARY ETTA
 GEANES, CAROL
 GLENN, HELEN
 GOFORTH, ELIZABETH
 GOODMAN, MARIE
 GREER, JANE
 GREGSON, MIRIAM
 GRIFFIN, MARIE
 GRIZZARD, ROSALIE V.
 GRUVER, BETTIE JEAN
 GULLEDGE, MARY LOUISE
 GURTNER, MURIEL
 HAIGLER, MARGARET
 HASTY, MARY STEVENS
 HATCH, MARGARET

HAWKINS, EDITH
 HEDRICK, CORNELIA H.
 HENDREN, PAULINE H.
 HENLEY, SADIE
 HIGSMITH, VIRGINIA
 HILL, MARY
 HINES, RUTH
 HODGES, MARGARET
 HORNE, FRANCES
 HUDSON, MARGARET
 HUMPHREYS, LOUISE
 HUNEYUTT, MARGARET
 HUNTER, MARY FURMAN
 HUNTER, NELLIE CLAY
 HURWITZ, NAOMI
 JACKSON, EMMA C.
 JENNINGS, MILDRED A.
 JOHNSON, MARTHA
 JONES, JUANITA
 KAPLAN, LILLIAN
 KENION, JOSEPHINE R.
 KENNEDY, MARY EMMA
 KERSEY, LOUISE
 KING, SARAH
 KIRK, LOUISE BLALOCK
 LAUGHINGHOUSE, RUTH
 LEE, VIVIANNE
 LEGARE, CECILE
 LINDSLEY, MARJORIE
 LITTLE, H. ELLEN
 LOCKHART, JANE G.
 LOGAN, DOVIE B.
 LONG, JANIE EHRNELL
 LUCAS, AGNES L.
 McARVER, GERALDINE
 McCLURE, MIRIAM MAE
 McCORMAC, MARION
 McCURDY, EDNA
 McIVER, MARY
 MacLEAN, MARJORIE
 McMANUS, HELEN
 McNEILL, ETHEL M.
 MABBREY, MARGARET E.
 MARSH, DOROTHY H.
 MATLOCK, OLA
 MAYO, MARY FRANCES
 MEASE, MARGARET
 MELCHOR, DOROTHY

MENDENHALL, RUTH
 MENZIES, CHRISTINA
 MITCHELL, ELIZA W.
 MITCHELL, MARY ALLEN
 MOHORNE, FRANCES
 MOORE, DORIS E.
 MOORE, JOYCE
 MOORE, MARION DINON
 MORGAN, KATHRYN
 MURRAY, FRANCES
 MYERS, DORIS A.
 MYERS, EMILY
 NEAVES, EMALENE
 NEVILLE, LOSSIE
 NEWELL, ETHEL MAE
 NEWLIN, MARGARET
 O'BERRY, LILLIAN RAE
 O'NEIL, EVELYN
 OPENSHAW, NORMA
 OSBORNE, CLARYCE
 OSBORNE, REBECCA SUE
 PALMER, MARY H.
 PARKER, RUTH HELEN
 PASCHALL, DORIS
 PATTERSON, MARGARET
 PEOPLES, MARGARET I.
 PEPPER, EMORIE
 PEPPER, MARJORIE
 PETERSON, JEANNETTE
 PETREE, HAZEL
 PETREE, REBECCA
 PEURIFOY, ELIZABETH
 PHILLIPS, KATHLEEN
 PICKLER, ROBBIE
 PORTER, BEVERLY
 POWELL, FRANCES
 POWERS, ALICE LOUISE
 PRESSON, EVELYN E.
 PROCTOR, MARY LOUISE
 PRUITT, PANSY
 RANKIN, MARY LOUISE
 RASCOE, VIRGINIA
 REAVES, VIRGINIA B.
 REEVES, LORRAINE
 REGISTER, CORNELIA
 RENN, HELEN
 ROTHCOCK, FRANCES
 ROWLAND, NELL

SAWYER, CARRIE MAE
 SCHLOSSER, CHRISTINE F.
 SCOTT, MARGARET
 SESSOMS, ELEANOR
 SEVERANCE, FRANCES
 SHELTON, ESTHER BURCH
 SHELTON, SARAH
 SHOLAR, VIRGINIA
 SHUPING, EUGENIA
 SMITH, FRANCES JUANITA
 SMITH, KATE HENRY
 SMITH, MARY HELEN
 SPRULL, LOUISE
 STARLING, LOC MAE
 STEPTOE, MARGUERITE
 STEWART, SARAH W.
 SUTTON, JEAN
 TAYLOR, MAMIE CLYDE
 TEAGUE, MARY JOSEPHINE
 THIGPEN, HILDA
 THOMAS, FRANCES
 TUGWELL, WILLIE
 TULL, MARION
 TYNDALL, GERALDINE
 VAUGHAN, SUSIE
 VERRILL, VIRGINIA DAVIS
 VESTAL, CHRISTINE
 VINCENT, LOBENE
 WALKER, WINONA LEORA
 WALLIS, DOROTHY A.
 WALTON, DORIS E.
 WARD, RUTH
 WEEKS, EVELYN
 WELLS, SALLY MARGARET
 WHEELER, ALLENE
 WHITE, LYDIA B.
 WHITE, MARY LEE
 WHITENER, LOUISE
 WHITLEY, NELLREE
 WILKERSON, MARGARET N.
 WILKIE, JANIE
 WILLIAMS, EMILY
 WILSON, CAROLINA
 WINFREE, VIRGINIA
 WRIGHT, MARIE
 WYATT, MARY
 YANCY, ANN MARIE





POTEAT



STREET



BYRD

THE ALUMNAE AND FORMER STUDENTS ASSOCIATION
INCORPORATED

OFFICERS

DR. MARY POTEAT

MRS. C. A. STREET (Julia Montgomery)

LAURA H. COIT

CLARA B. BYRD

President

Vice-President

Honorary President

General Secretary

MEMBERS OF THE BOARD OF TRUSTEES

MRS. M. J. WRENN (Louise Clinard)

MRS. T. R. EVERETT (Ruth Vick)

MRS. J. R. BENNETT (Josie Doub)

GERTRUDE CARRAWAY

MRS. JOS. W. JOHNSON (Virginia Batte)

MRS. R. MURPHY WILLIAMS (Lillie Boney)

MRS. GURNEY P. HOOD (Marion Stevens)

MRS. C. E. STEVENS (Carrie Tabor)

MRS. CLAUDE MORRIS (Emma L. Speight)

1937 PINE NEEDLES



- 1833 *Wake Forest Institute is chartered by the General Assembly. For a time it has seemed that anti-Baptist sentiment would block the bill, but on its final reading in the Senate there is a tie. Speaker W. D. Moseley gives the deciding vote in favor of the charter. Later, by legislative act, the name is changed to Wake Forest College and a more lenient charter granted.*
- 1837 *Davidson College is founded by the Concord Presbytery as "preparatory to the Gospel Ministry."*
- 1838 *Greensborough Female School becomes the first female college chartered in North Carolina and the second south of the Potomac.*
- 1838 *The future Duke University has its beginnings in a grammar school near High Point. This school, which soon becomes Trinity College, is under the North Carolina Conference of the Methodist Church, South. In 1924 the great Duke Foundation fund makes possible tremendous expansion.*
- 1891 *The Woman's College of the University of North Carolina, under the name of State Normal and Industrial School, comes into being as the result of a crusade made by Charles Duncan McLever in behalf of the education of women. Dr. McLever often said, "Educate a man and you have educated one person; educate a mother and you have educated a whole family."*

The data listed above, together with those concerning other colleges already referred to in our pages, provide a good index to the rapid development of higher education in North Carolina. This progress began with the chartering of the first State University in the nation and has continued with a slow but steady pace throughout the century and a half which have ensued.

BOOK THREE

WAKE FOREST



DAVIDSON

ORGANIZATIONS



ULLRICH

STUDENT GOVERNMENT

OFFICERS

JUSTINE ULLRICH

President

GERALDINE SPINKS

Vice-President

ALMA HALL

Secretary

GERTRUDE RAINY

Treasurer



SPINKS



HALL



RAINEY

JUDICIAL BOARD



EVELYN JOHNSON
 SHIRLEY MELCHOR
 MILDRED SWIFT
 FANNIE DANIEL
 VIRGINIA TATUM
 BETSY WILLIAMS
 SUSAN HAMLIN

LEGISLATURE

ISABELLE MOSELEY
 DAPHNE SAVAGE
 ELIZABETH DRAKE
 ADRIENNE WORMSER
 GEORGIA ARNETT
 BLAIR LYLE
 DOROTHY FICKER
 PHYLLIS KEISTER
 MARY ELIZABETH TAYLOR



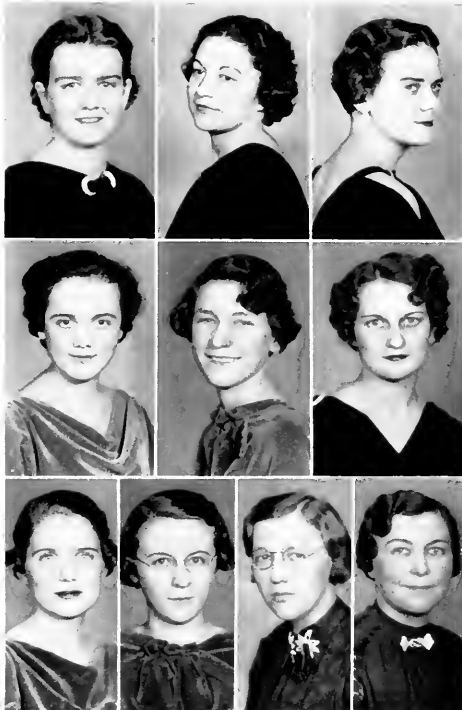
HONOR BOARD

JUSTINE ULLRICH
 BETSY WILLIAMS
 SHIRLEY MELCHOR
 MILDRED SWIFT
 HARRIET ELLIOTT, B.A., M.A.
 A. S. KEISTER, M.A., Ph.D.



ULLRICH
 MELCHOR
 ELLIOTT

WILLIAMS
 SWIFT
 KEISTER



DUPUY
 SCHMIDT
 GILL

SOLOMON
 MULLICAN
 BONEY GULLEDGE

HILL
 MACKIE
 MITCHELL

INTER-FAITH COUNCIL

OFFICERS

BETSY DUPUY

President

GLADYS SOLOMON

Secretary

MEMBERS

RUTH GORHAM

MISS CLEO MITCHELL

BETSY DUPUY

ANNIE MACKIE

GLADYS SOLOMON

RUTH GILL

ELAINE SCHMIDT

MARY BONEY

RACHEL MOSER

MISS MARGARET WILLIAMS

FRANCES MULLICAN

MISS IDALENE GULLEDGE

MRS. MARTHA ALLRED

DAY STUDENTS ORGANIZATION

OFFICERS

RUTH HILL

President

MILDRED MASHBURN

Vice-President

MARGARET GALLOWAY

Secretary-Treasurer



HILL

GALLOWAY

MASHBURN

HOUSE PRESIDENTS

MARGARET DeVANY

SUSAN SWETT

KATHRYN THOMPSON

LILLIAN JORDAN

LAURA ABERNATHY

GWEN McMULLIN

MARY ELIZABETH SANDERS

RACHEL DARDEN

LUCY SPINKS

LOUISE JORDAN

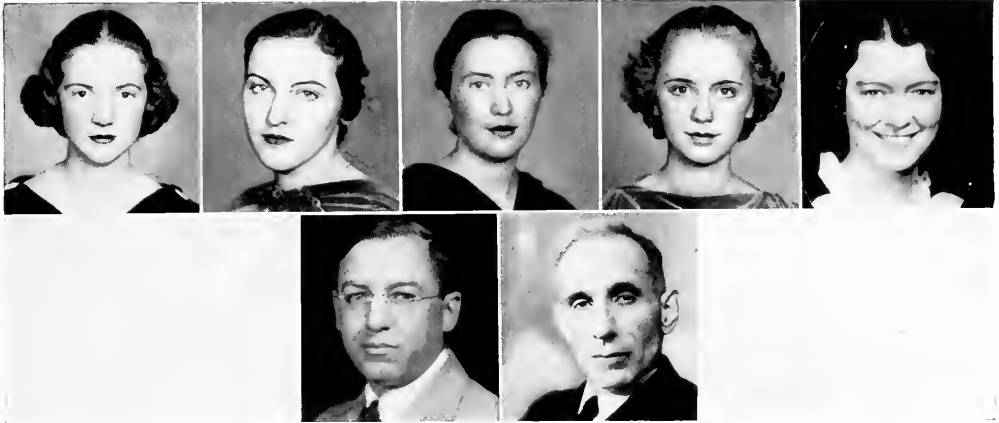
ELEANOR WESTERVELT

ALETHIA HOUGH

GRACE BELL



1937 PINE NEEDLES



BUTLER

WORMSER

KEISTER

NUNN

TEAGUE

NYE

SHERRILL

FINANCE BOARD

JOSEPHINE BUTLER

ADRIENNE WORMSER

MARY NUNN

RACHEL NYE

MISS KATHERINE SHERRILL

A. S. KEISTER, Ph.D.

MR. C. E. TEAGUE



WINSPEAR

WORMSER

GURLEY

QUILL CLUB

OFFICERS

BETTY WINSPEAR

President

SYBIL GURLEY

Vice-President

ADRIENNE WORMSER

Secretary-Treasurer

ZOOLOGY FIELD CLUB

OFFICERS

FIRST SEMESTER SECOND SEMESTER

President

ELIZABETH ANDERSON LORENA STROHM

Vice-President

NELL COBB MARTHA WISWALL

Secretary and Treasurer

PATTIE PITTMAN FRANCES SOWELL

Chairman Program Committee

LORENA STROHM ELIZABETH ANDERSON

Chairman Publicity Committee

MARTHA WISWALL GLADYS PRITCHARD

MEMBERS

ELIZABETH ANDERSON

H. H. BRIMLEY

MARY BRUMMITT

VICTORIA CARLSSON

NELL COBB

CATHERINE COX

ELEANOR DIBBLE

MARION FISHER

J. P. GIVLER

MILDRED HARRIS

HELEN INGRAHAM

EVELYN KERNODLE

R. W. LEIBY

LILA BELLE LOVE

MARTHA WISWALL

ANNIE MACKIE

IRENE PHRYDAS

PAT PITTMAN

GLADYS PRITCHARD

LAWRENCE RITCHIE

MARJORIE ROSENTHAL

LUCILLE SCARBOROUGH

A. D. SHAFESBURY

J. A. SMITH

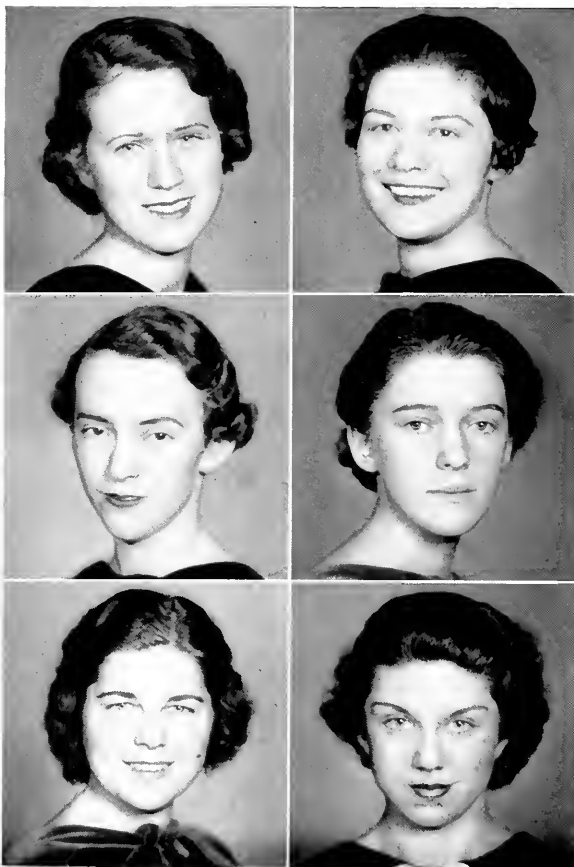
FRANCES SOWELL

CARROLL STOKER

LORENA STROHM

MABEL UPCHURCH

MARY W. WARD



COBB
PITTMAN
STROHM

WISWALL
SOWELL
PRITCHARD



THE CAROLINA MARINE LABORATORY Beaufort, N. C.

This laboratory, which owes its existence chiefly to the enthusiasm and gifts of present and past members of the Zoology Field Club, members of the faculty and friends of the college, and a federal grant from the E.R.A., is available for summer work by students and faculty members.

Y. W. C. A. CABINET

MEMBERS

- ELIZABETH COPELAND
- LEAH SMIRNOW
- MERLE LEAVITT
- MARJORIE GLENN
- MARIE SETTE
- SHEILA CORLEY
- CHARLOTTE MICHLIN
- GRACIE CARMICHAEL
- SARAH STEWART
- ANNA KATHERINE OWEN
- SUSANNAH THOMAS
- ELEANOR KERCHNER
- FRANCES YERGER
- ROSEMARY SNYDER



OFFICERS

- | | |
|-----------------|-----------------------|
| RUTH GORHAM | <i>President</i> |
| BETSY DUPUY | <i>Vice-President</i> |
| JULIA LOVELACE | <i>Secretary</i> |
| MAXILLA EVERETT | <i>Treasurer</i> |



GORHAM

DUPUY

LOVELACE

EVERETT

PLAYLIKERS

OFFICERS

ELIZABETH ASHLEY

President

ELAINE SCHMIDT

Secretary



ASHLEY

SCHMIDT

MASQUERADERS

BETSY WILLIAMS

JUSTINE ULRICH

ELIZABETH ASHLEY



PRIDE AND PREJUDICE

ART CLUB

OFFICERS

EVELYN KERNODLE

PATTIE PITTMAN

SARAH ATKINSON

LILLIAN JACKSON

VIRGINIA JACKSON

President

Vice-President

Secretary-Treasurer

Chairman of Program Committee

Chairman of Publicity Committee



MEMBERS

BETTY ALDRICH

SARAH ATKINSON

SUSAN BARKSDALE

WILLIE BOYD

MARY COCHRANE

JESSIE DOUGLAS

ELIZABETH HUNT

MRS. GREGORY IVY

MR. GREGORY IVY

LILLIAN JACKSON

VIRGINIA JACKSON

EVELYN KERNODLE

JANE MCKEE

MARGUERITE MANN

BARBARA MOORE

MOLLY ANNE PETERSON

PATTIE PITTMAN

ELIZABETH REEVES

ELIZABETH REHM

VIRGINIA ROGERS

MR. ROBERT M. SKELTON

ROSEMARY SNYDER

ALMA M. SPARGER

JUNE TORIAN

ELIZABETH UZZELLE

MRS. ELIZABETH WEATHERSPOON

MARGARET WHITEHURST

PHI BETA KAPPA

Foundation: W. C. JACKSON, Ph.D.

OFFICERS

GEORGE UNDERWOOD, Ph.D.

President

WINFIELD S. BARNEY, Ph.D.

Vice-President

RUTH COLLINGS, M.D.

Secretary-Treasurer

ALUMNAE OUT OF COLLEGE OVER TEN YEARS

CLASS OF 1906

MARTHA E. WINFIELD*

CLASS OF 1910 AND 1922

JANE SUMMERELL

CLASS OF 1920

MRS. JULIA SPRUILL

CLASS OF 1931

MABEL ADDERHOLT
NANCY BAKER

MRS. HELEN SEIFERT KAFER
MRS. MARY JANE WHARTON THAYER

CLASS OF 1932

MRS. PANSY McCONNELL HOOD, MARY LEWIS
EVELYN UNDERWOOD

CLASS OF 1933

MARGARET BANE
MARJORIE HEFREN
ELIZABETH LANGFORD
MRS. EKNESTINE McDONALD

KATHERINE MOSER
PAULINE MOSER
ELEANOR SHELTON
JULIA WATSON

CLASS OF 1934

ALICE ARMFIELD, RUTH LONG
MARGARET BROWN

CLASS OF 1935

KATHERINE BAXTER
PHOEBE BOBBITT
MARY BRANTLEY
MILDRED CONKLIN
GENEVIEVE CORBETT
JANE COSTNER
ROBBIE DUNN
LORENA FAIRBANKS
FRANCES GRANTHAM
LORRANE GRAY
MARY ALICE HUTCHINSON
ALICE JOHNSON

MARION McDOWELL
MARY HAZEL MEACHAM
KATHERINE M. MILLER
MARGARET MOSER
RUBY BASS SMITH
ALICE MARIE SQUIRES
ALICE SMITH
MARGARET TILLET
MARY TORIAN
KATE WILKINS
MARY E. WOODARD
RUTH WORLEY

CLASS OF 1936

ELIZABETH BARINEAU
MARY REYNOLDS BRADSHAW
ELIZABETH BUDMANN
MAUSLEAT GARRARD
BETTY GRIESINGER
BLANCHE NEWSOME HARDY
ROSABELLE HINTON

RUBY JANE KELLER
CHRISTIANA McFADYEN
MARY CATHERINE PROCTOR
CORNELIA SNOW
MARY CLARE STOKES
MARTHA BYNUM THOMAS
ELIZABETH YATES

*Deceased



LINDA MITCHELL, *Chief Marshal*

S O C I E T I E S

The Adelpgian, Cornelian, Dikean, and Aletheian are the four social organizations. They occupy a most important place in student life. Managed entirely by the students, they give opportunity for friendly intercourse and social improvement.

ALETHEIA



ALMA HALL



BARBARA CUTHRELL



DORIS COCKERHAM
President

SONG

*Ah! Truth, whose light throughout the countless years
Has been passed down to us from soul to soul,
We seek Thee, tho' through toil and pain and tears,
Until we find Thee, that we may be who'e.
A spark of Thee is born within each breast;
We strive to feed that tiny altar fire
With other sparks we find upon our quest,
O Aletheia, of our pure desire.*

*Thou art an ideal, boundless, unattained,
While yet we strive to live Thee every day;
Thou art in all, and yet cannot be gained
Save by long search, and weary, and the way
Winds by strongholds of ignorance and sin.
But seeking Thee in all we know, at last
We'll break the gates that there may enter in
Thy light of understanding when our search is past.*



MARTHA McRAE



DOROTHY FITZPATRICK



RACHEL MOWER



WEITZEL



SCHMIDT



DRAUGHON



TART



MITCHELL

OFFICERS

DORIS COCKERHAM

President

RUTH WEITZEL

Vice-President

ELAINE SCHMIDT

Recording Secretary

RACHEL DRAUGHON

Corresponding Secretary

EVELYN TART

Treasurer

LINDA MITCHELL

Inter-Society Representative

ADELPHIA



PEGGY DeVANY

MARIETTA MUELLER



SARAH DALTON
President

SONG

*Shoulder to shoulder, hearts filled with devotion,
With purpose not aimless but earnest and true,
United by all the ties of deep friendship,
We bring, O Adelpi, our homage to you.*

*We pledge to you loyalty long and unending,
Loyalty which will be firm, which will be true,
Devotion we pledge you that never shall perish,
And love which through all coming time will endure.*

*With courage undaunted we'll march ever onward,
Up heights to be won along parts strange and new;
But now and forever one great band of sisters
We'll be, O Adelpia, still loyal to you.*



LUCY SPINKS



ISABELLE MOSELEY



RACHEL DARDEN



HAYNES



PEDEN



GAULT



JACKSON



NYE

OFFICERS

SARA DALTON

President

ANNE HAYNES

Vice-President

ELIZABETH PEDEN

Recording Secretary

LILLIAN JACKSON

Treasurer

RACHEL NYE

Inter-Society Representative

DIKE



ALETHEA HOUGH



GERALDINE BONKEMEYER



GRACE HARRIMAN
President

SONG

*Dike, who speaks with reverberant grandeur,
Through listening portals of true womanhood,
Into thy vastness, we come none entrusting
Powers as yet latent with will's hope imbued;
Glad for the toiling, the common endeavor,
Glad for the wideness of ways to be won,
To do for the deed's sake, sti'l keeping the vision,
Trusting secure in the lives 'round us throen.*

*Stamped with that beauty and light of thy image
We would go forth with a creative faith;
Builders potential and makers of highways,
Easing for others the paths they may take,
And as the sunset gives place to the sunrise,
After us cometh the child of the dawn
To fashion the fabric of dreams scarce completed
And serve Thee forever, O Light, farther on.*



ELIZABETH ASHLEY



KATHRYN THOMPSON



SUSAN SWETT



BUTLER



SNYDER



PEASE



MALLO

OFFICERS

GRACE HARRIMAN

President

JULIA BUTLER

Vice-President

ROSEMARY SNYDER

Treasurer

HELEN PEASE

Corresponding Secretary

OLGA MALLO

Inter-Society Representative

CORNELIA AND THE GRACCHI



MARY ELIZABETH SANDERS



LILLIAN JORDAN



SUSANN HAMLIN
President

SONG

*In joy and praise come let us sing
With anthem clear and strong;
Let all Cornelian voices ring
In free, exultant song,
Of pride for that fair name we bear,
Cornelia, glorious word,
To make us gladly do and dare,
Whene'er 'tis thought, whene'er 'tis heard.*

*We'll onward, upward ever more,
Our footsteps forward pressed;
Together more in sister-love
Upon the mountain's crest,
To gain the fair, wide, spreading view
Which round the mountain lies,
And give us understanding new,
Enlightening our eager eyes.*

*May Cornelia's name have ne'er a stain
From any daughter's deed,
For her, all glory will be given
And give her honor's meed;
For firm and staunch we'll ever stand
Unto each other true,
And loyal to her noble band,
Hers, yea, her own, our whole lives through.*



CAROLYN PROUT



VIRGINIA TATUM



BETTY CALDER



McCAIN



SNYDER



DANIEL



WATKINS

OFFICERS

SUSAN HAMLIN

President

ALMA McCAIN

Vice-President

ELIZABETH SNYDER

Secretary

FANNIE DANIEL

Treasurer

ANNE WATKINS

Inter-Society Representative



WARD
KING

BOTANY CLUB

OFFICERS

MARY WILLIAMS WARD
President

GOLDA PEEDIN
Secretary-Treasurer



HOME ECONOMICS CLUB

EXECUTIVE COUNCIL

MARY HELEN KING, *President*

- BETTY COOKE
- FRANCES YERGER
- SALLY TAYLOR
- JANE UMSTEAD
- ISABELLE MOSELEY
- MISS MARY YORK



MADRIGAL CLUB

OFFICERS

ANNIE CRAWFORD

President

ALLEINE GRIMES

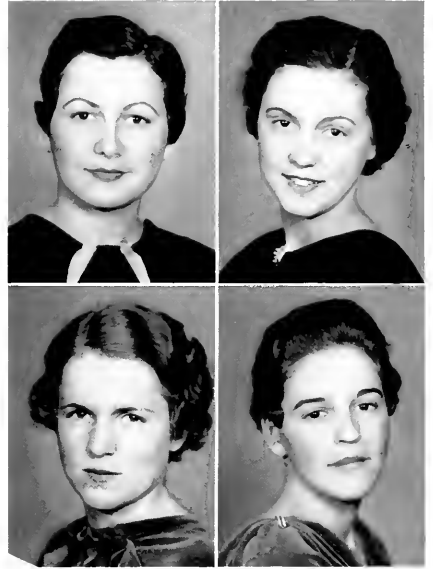
Vice-President

FRANCES MOSELEY

Secretary

ANNIE LOUISE SLOOP

Treasurer



MEMBERS

MARGUERITE BARNHARDT
FRANCES BARRETT
ANNICE CRAWFORD
BESS FEIMSTER
DOROTHY GASKINS
MARJORIE GLENN

ALLEINE GRIMES
ELEANOR McCLUNG
KATHRYN MEWBORN
MAUREEN MOORE
FRANCES MOSELEY
YLIA PUIG
LOUISE WINGATE

ELAINE REAGAN
MARY E. SANDERS
INEZ SHUFORD
ANNIE LOUISE SLOOP
MARGARET TYSON
ALICE WALTERS

FACULTY MEMBERS

BIRDIE H. HOLLOWAY

GRACE VAN DYKE MORE



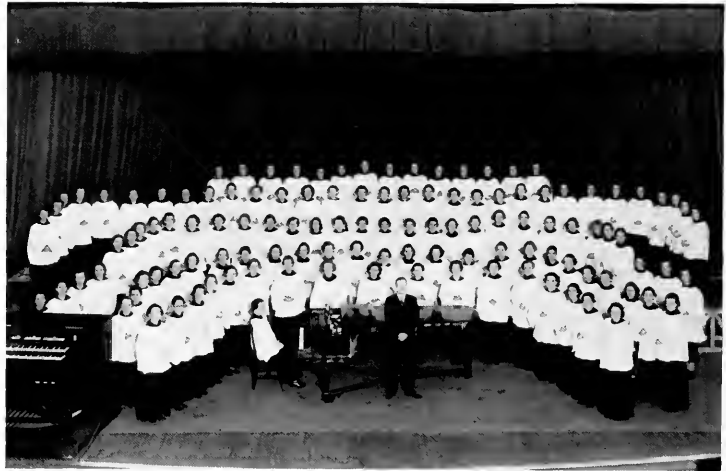
COLLEGE CHOIR

OFFICERS

- RACHEL MOSER *President*
 ELIZABETH DRAKE *Vice-President*
 ANNIE LOUISE SLOOP *Secretary*
 ANNICE CRAWFORD and MARY NEAL SAUNDERS *Librarians*
 GRACE CARMICHAEL *Vestment Chairman*
 MARY PATE and FRANCES BARRETT *Assistants*
 MR. GEORGE M. THOMPSON *Director*



MOSER



MEMBERS

CRAWFORD, ANNICE
 TYSON, MARGARET
 RIGG, CAROLINE JANE
 BROWN, BARBARA
 BARNHARDT, MARGARET
 CARMICHAEL, GRACE
 MUES, ELSIE
 TATE, KATHERINE
 PEREZ, MARIE
 SALTMAN, KATHRYN
 MILLER, MILLICENT
 OLIVER, DOROTHY
 LASSITER, JEAN
 MEWBORN, KATHRYN
 SWAIM, OLIVA
 JORDAN, ANNE
 BLADES, ALICE
 WINGATE, LOUISE
 EVERETT, MAXILLA
 WEBER, ANN
 GILL, RUTH
 WEINGER, RUTH
 PALMER, RUTH
 SMITH, EVELYN
 STOKER, CARROLL

SELLERS, VIOLA
 ROSE, ANNIE LEA
 MOORE, MARTHA
 SCHULTZ, MADELYN
 TAYLOR, MARY ELIZABETH
 SHUFORD, INEZ
 UHL, BARBARA
 YOUNG, GERALDINE
 HUNT, FLORENCE
 LOVELL, DOROTHY
 DeVANY, MARGARET
 DRAKE, ELIZABETH
 HELLEN, MILDRED
 HENDERSON, ELINOR
 MALOCK, ORA
 CARPENTER, KATHERINE
 EDMONDSON, EDITH
 HARRISON, REBECCA
 MOSER RACHEL
 OWEN, ANNA C.
 TRIPP, GLADYS
 JONES, DOROTHY
 GRIMES, ALLEINE
 FORESTER, HELEN
 SMITH, MAMIE GRACE

GORDON, MARY
 MCKEE, JANE
 REDDING, MARY
 FEIMSTER, BESS
 BONEY, MARY
 CONRAD, CAROLINE
 MOORE, BARBARA
 EMMETT, RACHEL
 BRABBLE, CATHERINE
 COCHRANE, MARY
 PATE, MARY
 MARSTON, ELSIE
 MICHELIN, CHARLOTTE
 STEWART, JULIA
 HEFFNER, BERNICE
 SNOW, THEREAS
 SAUNDERS, MARY NEAL
 BARRETT, FRANCES
 SAVAGE, DAPHNE
 FICKEE, DOROTHY
 AYRES, RUTH
 FAIRBANKS, MURIEL
 GASKINS, DOROTHY
 HALL, EVELYN
 CALDWELL, FRANCES

MITCHELL, ARTHELIA
 BRONSON, MARY JEAN
 GLENN, MARJORIE
 MEEKS, VIRGINIA
 SCHOELLKOFF, DOROTHY
 ZIEL, JEAN
 WALKER, HAZEL
 DOWDY, HILDA
 ROSSEY, GRACE
 PLATT, JEANETTE
 REAGAN, ELAINE
 JOHNSON, DOROTHY
 GRIER, JANE
 BRISTOL, SARAH E.
 SANDERS, MARY E.
 MOSELEY, FRANCES
 ARMSTRONG, JEANETTE
 KIRK, LOUISE
 LAWRENCE, JOSEPHINE
 SLOOP, ANNIE LOUISE
 SHARP, LOUISE
 WILLIAMS, CHARLOTTE
 ROBERTSON, ELAINE
 WALTERS, ALICE

CHEMISTRY CLUB

OFFICERS

DOT SHERWIN

President

MABEL LIVINGSTON

Vice-President

RUTH WESCOTT

Secretary-Treasurer

MISS FLORENCE SCHAEFFER }
MISS MARY WELSH PARKER }

Faculty Advisers



SHERWIN
SMIRNOW



ORCHESIS

OFFICERS

LEAH SMIRNOW
President

WILMA LEVINE
Secretary-Treasurer

MISS DAVIS
Faculty Advisor



SPEAKERS CLUB

OFFICERS

BETSY DUCY

President

MARY ELIZABETH PURVIS

Secretary

MR. C. W. PHILLIPS

MISS LOUISE ALEXANDER

DR. ELBERT MOSES, JR. }

Faculty Advisers



DUCY

DOLPHIN CLUB

OFFICERS

JULIA BUTLER

President

ANNE WATKINS

Secretary

MISS DOROTHY DAVIS

Faculty Advisor





SWIFT

ROBERTS

FRENCH CLUB

MILLIE SWIFT

President

PHYSICS CLUB

MARIE ROBERTS

President

HELEN PLAYER

Vice-President

DOT SHERWIN

Secretary-Treasurer



WILKINSON

SQUARE DANCE CLUB

ROWENA WILKINSON

President

EDUCATION CLUB

OFFICERS

KATHRYN HOLLOWELL

President

VIRGINIA MOSELEY

Vice-President

MARIE MOORE

Secretary

SARAH DALTON

Treasurer



HOLLOWELL
MOORE

MOSELEY
DALTON

MEMBERS

Anderson, Elizabeth
Andrews, Martha
Ashley, Elizabeth
Baruhardt, Marguerite
Barrier, Marguerite
Bell, Grace
Bell, Mary
Belton, Anne
Boyer, Camille
Bohannon, Rebecca
Bolick, Helen
Bost, Fan
Boyd, Willie
Brag, Matilda
Brittain, Virginia
Brown, Esther
Bunn, Margaret
Burgess, Marjorie
Burnette, Louise
Butler, Josephine
Butler, Julia
Caldwell, Louise
Cann, Margaret
Carmichael, Grace
Carpenter, Edna
Clark, Gertrude
Cobb, Nell
Cockerman, Doris
Cole, Ethel
Collette, Mataline
Cornwell, Mary
Correll, Lois Mae
Crawford, Annice
Crouch, Katherine
Crowder, Aileen
Crutcheheld, Helen
Dalton, Sarah
Dennis, Ruth
DeVany, Margaret
Dickinson, Alice
Dowdy, Hilda
Dray, Betty
Efland, Eloise
Ellis, Kathryn
Ely, Esther
Farmer, Belva
Fehner, Mary Lee
Fitzgerald, Louise
Gamble, Gladys
Gant, Elizabeth

Gardner, Mary Lee
Gibson, Eugenia
Gilbert, Katherine
Godwin, Etta Mae
Goodwin, Jane
Gorham, Josephine
Gorham, Ruth
Grey, Mrs. Margaret
Grier, Helen
Griffin, Janet
Grimes, Allene
Grimsley, Elizabeth
Governan, Elizabeth
Garley, Sybil
Gwyn, Scott
Hamrick, Helen
Hankins, Mary L.
Hardison, Wilma
Harrell, Leone
Harrison, Rebecca
Haynes, Flora
Hassell, Lillian
Hellen, Mildred
Henry, Pauline
Hicks, Ethalyn
Holland, Marguerite
Hollowell, Kathryn
Holt, Ruth
Hood, Lucinda
Hough, Alethea
Johnson, Evelyn
Johnson, Wilma
Jones, Dorothy
Kilhan, Thelma
King, Mary Elizabeth
King, Mary Helen
Klut, Blyte
Knox, Clara
Leavitt, Merle
Lee, Annabel
Lee, Marjorie
Lee, Sidney
LeRoy, Margaret
Livingston, Mabel
Lowey, Gladys
Lucas, Josephine
McBee, Belle
McCracken, Lura
McDonald, Rossell
McDonald, Dorothy

Mackie, Annie
Mallo, Olga
Moore, Marie
Morrall, Phyllis
Morrison, Janet
Moseley, Isabelle
Mossley, Virginia
Mower, Rachel
Nelson, Florence
Oliver, Mattie
Pendleton, Aileen
Perry, Margaret
Pooser, Helen
Powell, Lucy
Pritchard, Gladys
Prout, Carolyn
Pugh, Lillian
Reed, Laura
Reid, Ruth
Reynolds, Grace
Roberts, Helen
Robinson, Florence
Rollins, Billie
Royall, Letha
Ryan, Alice
Saunders, Mary Elizabeth
Scott, Eva Mae
Sherwin, Dorothy
Shore, Audree
Shores, Carrie
Shumate, Mildred
Silverman, Dorothy
Sloop, Erlean
Smith, Dorothy
Spinks, Geraldine
Steele, Maude
Strickland, Maxine
Sturdivant, Patricia
Swain, Lenore
Swift, Mildred
Talbert, Nancy
Tart, Evelyn
Torrian, June
Towne, Willa
Trice, Sarah
Underwood, Mildred
Vancannon, Hazel
Wakefield, Kathleen
Ward, De Willa
Ward, Mary

Watkins, Anne
Weitzel, Ruth
Wenz, Elizabeth
Westervelt, Elizabeth
Wilkinson, Rowena
Williams, Betsy
Williams, Esther
Williams, Fae
Williams, Rebecca
Winspear, Elizabeth
Wissall, Martha
Whiteside, Sara
Witherspoon, Mary
Young, Marie

FACULTY MEMBERS

Chuts, O. P.
Cook, John
Denney, Marie
Fitzgerald, Mary
Fitzgerald, Ruth
Flintom, Margaret
Gunter, Ruth
Holloway, Birdie
Hunter, Eugenia
Kephart, A. P.
Kimmel, Herbert
Kreimier, Anne
Krug, Helen
Kyser, Frank
Ladd, Geraldine
Land, Betty Aiken
Lloyd, Eunice
MacFadden, Miriam
Martus, Ethel
Meheffie, Harriet
More, Grace Van Dyke
Park, Herbert
Reaser, Anna
Sichelton, Robert
Smith, John
Sparger, Alma
Spier, Etta
Sprull, Patty
Street, Mrs. Madelene
Weatherspoon, Mrs. Elizabeth

SQUARE CIRCLE

OFFICERS

MARGARET LeROY *President*
 OLGA MALLO *Vice-President*
 ANNABEL LEE *Secretary-Treasurer*
 MISS CORNELIA STRONG, *Faculty Advisor*



LeROY MALLO LEE

MEMBERS

IMO JEAN ANTHONY	MILDRED KNOX	HELEN PEASE
DR. HELEN BARTON	MERLE LEAVITTE	ALICE POWELL
MARY E. BUNCH	ANNABEL LEE	ESTHER ANN QUINN
DORIS COCKERHAM	MARGARET LeROY	EMILY STANTON
SARAH DALTON	DOROTHY LEWIS	MISS CORNELIA STRONG
CATHERINE DAVIS	OLGA MALLO	NELL TYSON
MADELINE FARTHING	BESSIE McFADDEN	MISS EMILY WATKINS
CATHERINE FLEET	MACHEL McLAIN	LORETTA WILLIS
PAULINE FIELDS	REMA MORGAN	HELEN VEASEY
MARGARET IDOL	FLORA PEARSALL	MARY ZIMMERMAN



GRIFFIN

STEGALL

THE 1937 PINE NEEDLES

After graduation is over, a yearbook becomes an invaluable means of reviving memories and aspirations of the past. Realizing this truth, we have attempted to record in the pages of the 1937 PINE NEEDLES the familiar scenes and everyday occurrences of our college life. In its pages will be pictured daily routine rather than spectacular endeavor. The clubs with their manifold interests, the frenzied battles waged on the athletic fields, the laboratories where unholy brews are concocted by eager students, the dormitories with their studious occupants (and bits of gossip flying about occasionally)—all our varied activities are portrayed within this volume. Because it thus vividly reflects the college year, we hope that the 1937 PINE NEEDLES will long be cherished.

To Miss Nettie Sue Tillett we extend our most sincere gratitude for her kind assistance in compiling this yearbook.

THE 1937 PINE NEEDLES

LITERARY STAFF

MARY LEE GARDNER
ANNE BELTON
MARGARET BOATMAN
MAXILLA EVERETT
MINNIE LOU PARKER
KITTY MAYFIELD
BETTY ALDRICH
JEAN ABBITT
VIRGINIA LANE
AGNES GRAHAM
FRANCES BERBERT

BUSINESS STAFF

HELEN DENNIS
MARY ZIMMERMAN
EMILY HARRIS
KATHERINE LANDEN
ETHEL CODY
VIRGINIA EDWARDS
EVA MAE SCOTT
BARBARA MOON
JO WAGNER
JANE GOODWIN



GARDNER
MAYFIELD

WAGNER
DENNIS

BELTON
ALDRICH

SCOTT
EVERETT

CODY
PARKER

1937 PINE NEEDLES

KATE UROUHART
Editor-in-Chief

GERALDINE BONKEMEYER
Business Manager

BETTY CALDER
Managing Editor

BETTY TRIMBLE
Advertising Manager



UROUHART



BONKEMEYER

CAROLINIAN



EDITORS

KATHERINE GILBERT
LUCILE SCARBOROUGH
GLADYS MEYEROWITZ
ADRIENNE WORMSER
MANINE GARNER
MARJORIE LEE
ELEANOR KERCHNER
ELIZABETH PHILLIPS
CARROLL STOKER
SUSANNAH THOMAS
RUTH WESTCOTT
ELIZABETH COPELAND

VIRGINIA JACKSON *Art Editor*
PHYLLIS MORRAH *Book Review Editor*
GRACE REYNOLDS ... *Photography Editor*
HELEN PEASE *Society Editor*
NELL STURKEY *Sports Editor*
ALETHEA HOUGH } *Circulation Managers*
EVELYN JOHNSON }

EDITORIAL BOARD

BETTY WINSPEAR
RACHEL DARDEN
VIRGINIA TATUM
LEAH SMIRNOW
GERTRUDE RAINEY
PHYLLIS KEISTER

WINSPEAR
HOUGH

JOHNSON
REYNOLDS

CALDER

SCARBOROUGH
TRIMBLE

1937 PINE NEEDLES



CRUTCHFIELD



SWIFT

HELEN CRUTCHFIELD
Editor-in-Chief

BELUS SWIFT
Business Manager

THE CORRADI

EDITORIAL STAFF

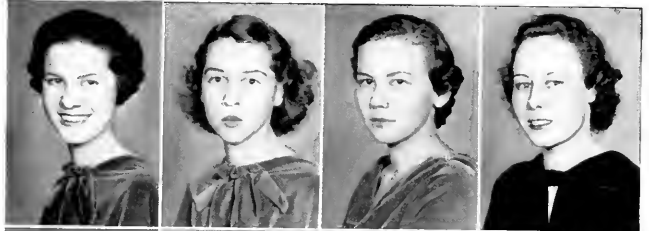
PHYLLIS MOFRAH GLADYS MEYEROWITZ
SYBIL GURLEY ADBIENNE WORMSER
SHEILA CORLEY MARIE SETTE
BETTY WINSPEAR RUTH HILL
 GEORGIA ARNETT

BUSINESS STAFF

RUEL CAPEL VIOLA GRADECK
 EDNA EARLE BOSTICK

ART STAFF

EVELYN KERNODLE ELIZABETH REEVES
MIRIAM SLOAN VIRGINIA JACKSON



KERNODLE
WINSPEAR
CORLEY

JACKSON
MEYEROWITZ
HILL, WORMSER

SLOAN
SETTE
CAPEL

GURLEY
ARNETT
BOSTICK

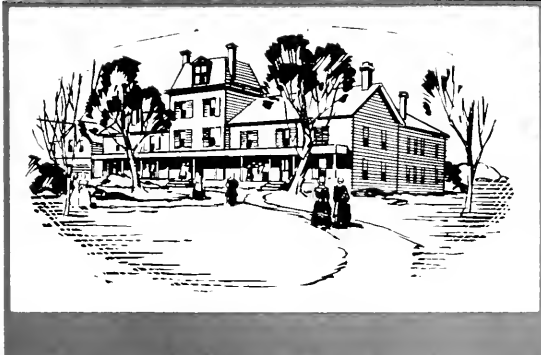
- 1852 *Calvin H. Wiley becomes first General Superintendent of Common Schools.*
1864 *The plan for the graded school system as outlined at the meeting of the State Board of Education in 1860 is passed by the Legislature.*
1865 *The Legislature recognizes the right of the Negro to be educated, setting up Shaw University, Raleigh, and Washburn Seminary, Beaufort.*
1870 *Despite post-war confusion, the first public white graded school, aided by money from the city treasury, is established in Greensboro.*

"Our teacher was, in many respects, a good-natured man; but even Job's patience would not have been proof against the trials he endured in the grievous misprints of text-books. By some odd fatality, every hard sum in Daboll's Arithmetic had the answer wrong; and we shall never forget the earnestness with which the good old man, after having tugged for hours over a tough question which had stumped our feebler capacities, would expound on the blunders of Daboll's Arithmetic and the merits of Pike's Arithmetic, the book which he had studied and which he recommended to us as the very pink of perfection in figures. Misfortunes, however, never came singly. A copy of Pike was at length procured; we prized it as a treasure and bore it in triumph to our venerable teacher. His eyes glistened with delight. It looked as if the course of arithmetic would run smooth. But to our consternation and amazement we found that we were still the sport of mischievous printers, and that every hard sum, even in Pike, had the wrong answer!"

—From an old manuscript.

BOOK FOUR

CHOWAN



OXFORD FEMALE

ATHLETICS

ATHLETIC ASSOCIATION



LUCAS

OFFICERS

JO LUCAS	<i>President</i>
EDITH WATTS	<i>Secretary</i>
LEAH SMIRNOW	<i>Treasurer</i>



WATTS

SMIRNOW

CABINET

SUSAN HAMLIN
 RUTH WESTCOTT
 GRACE HARRIMAN
 STEPHEN WILEY
 ROWENA WILKINSON
 JOSEPHINE BUTLER
 GWEN McMULLEN
 MARIE ROBERTS
 JULIA BUTLER
 JANET MORRISON
 ALICE DICKINSON
 JULIA ROOT
 CAROLYN PROUT
 JEAN WILSON
 EVELYN TART
 KATHERINE CROUCH
 AILEEN PENDLETON
 BEE WESTERVELT
 NELL STURKEY



HOCKEY



TENNIS



BASKETBALL



SWIMMING



VOLLEY BALL



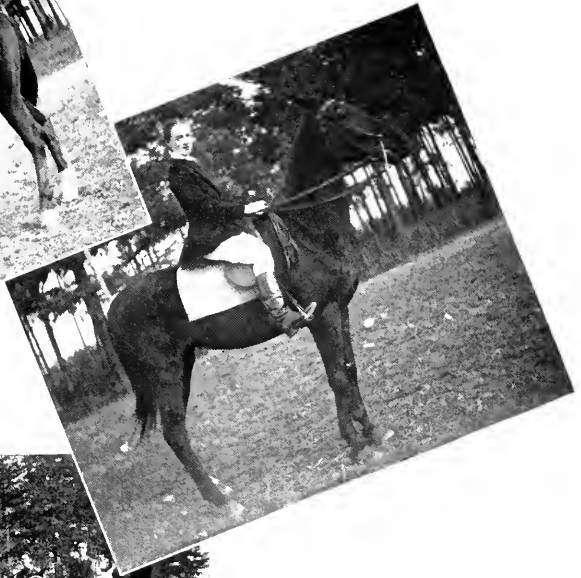
SOCCER

GYMNASTICS



BASEBALL







- 1901 *Governor Aycock is elected, pledged to give every child a chance for an education.*
- 1915 *There is a public high school in every county in the state, and the State University publishes a list of the accredited schools.*
- 1917 *Definite standardization of teacher training for certification is begun.*
- 1921 *Through the Rosenwald fund and the General Assembly's Special Building fund, counties are enabled to borrow money to set up high schools for negroes respectively.*
- 1933 *The State assumes complete support for a term of eight months of school*

With the election in 1901 of North Carolina's great education governor, Charles B. Aycock, a zealous campaign for state-wide education was launched. By 1915 the State University was able to publish a list of accredited high schools. Two years later the definite standardizing of teacher training was begun. Meanwhile, about 1912, night schools for adults were opened in the public school house on moonlight nights. The object of "Moonlight schools" was the reduction of adult illiteracy. It was expected that the response would be slow, but more than a thousand men and women from 18 to 86 years old were enrolled the first evening. Among these were not only illiterate farmers and their illiterate wives, sons, and daughters, but also illiterate merchants, or "storekeepers," illiterate ministers, and illiterate lumbermen. Mothers, bent with age, came that they might learn for the first time to read letters from absent sons and daughters, and that they might learn for the first time how to answer these letters. Trooping over the hills and out of the hollows, they came, some to add to the meager education received in the inadequate schools of their childhood, some to receive their first lessons in reading and writing.

BOOK FIVE

ST. MARY'S



PEACE

FEATURES



Justine Ullrich
MT. CLEMENS, MICHIGAN



Josephine Butler
SAVANNAH, GEORGIA



Geraldine Spinks
RALEIGH, NORTH CAROLINA



Josephine Lucas

GREENSBORO, NORTH CAROLINA



Kate Urquhart

WOODVILLE, NORTH CAROLINA



Elizabeth Ashley

WESTFIELD, MASSACHUSETTS



Daphne Savage
NORFOLK, VIRGINIA



Lillian Jordan

HARTSVILLE, SOUTH CAROLINA

May Day

1936

May Day



May Queen

ALICE DUNLAP
Albemarle, North Carolina



... 1936







THE PIEDMONT PRESS

Specialists in

*School, College and Social
Printing*

429 W. Gaston Street

Phone 2-1196

*Always First to Show the Latest
Millinery, Bags, Gloves, and
Lingerie*

BETTY LOU SHOPPE

Greensboro, N. C.

120 S. Elm Street

**JEFFERSON ROOF
RESTAURANT**

On Top Jefferson Standard Building

Delicious Food

*Special Attention Given to Private
Parties*

Greensboro, N. C.

Phone 6814

SERUNIAN & SONS

Oriental and Domestic

— R U G S —

Cleaning—Repairing—Storing

224 S. Green Street

Phone 2-2065

**MARY LEE
RIDING ACADEMY**

Safe Horses

The horses pictured in this book are from our stables. You will find there a good, well-schooled, easy to handle horse, and when you are riding, you will always be accompanied by a competent instructor.

Telephone 7214 :: :: :: Telephone 7214

KOONTZ

DRY CLEANERS

for

Guaranteed Satisfaction

EFIRD'S

New Modern Department Store

EFIRD'S

For Correct Fitting and Style

Patronize Our

Advertisers

*The "Best Dressed" Students' Dependable
Fashion Source*

The New
BROWNHILL'S

108 North Elm Street Greensboro, N. C.

Younts-DeBoe Co.
WHILE QUALITY IS HIGHER THAN PRICE

106 North Elm Street
GREENSBORO, N. C.

QUALITY CLOTHING

Hats, Furnishings, Shoes

ARNOLD'S
Smart Shop

PIEDMONT BUILDING
112 N. Elm Street

— *Inexpensive SMART Fashions* —

— **THE ART SHOP** —

118 West Market Street

Kodak Finishing :: Enlarging

Portrait Photography

Kodaks :: Pictures :: Frames

GREENSBORO DRUG CO.

C. M. FORDHAM DEWEY FARRELL

Prescriptionists

230 West Market Street Dial 6147

THE GRILL

"Courteous Service"

At THE GRILL you will find your favorite sandwich
and drink, also deliciously prepared

PLATE LUNCHES

9461 — PHONES — 9465

FRED SHOWFETY, *Proprietor*

PROMPT DELIVERY ON DORM ORDERS

*Where You'll Always Find "Darling"
Styles and Outstanding Values*

DRESSES COATS
FURS SUITS

MILLINERY

DARLING SHOP

106 SOUTH ELM STREET

Patronize Our

Advertisers

DIXIE SUNDRY SHOP

MR. AND MRS. BERT D. HAYMS
332 Tate Street

50 Varieties of
DELICIOUS SANDWICHES

For Prompt Delivery Call That
MAGIC NUMBER 9283

— ALL NEW CARS —

25c—*One or Five Passengers*—25c
Anywhere in City

BLUE BIRD TAXI

DIAL 5112

DIAL 5112

**MODERN CHARM BEAUTY
SHOP**

We specialize in all lines of
BEAUTY CULTURE

You will find us conveniently located

331 Tate Street

Dial 6526

CAROLINA PHARMACY

401 TATE STREET
Corner Walker Avenue

— DIAL 8197 —

For More Than a Third of a Century . . .

THE STORE OF QUALITY FASHIONS
for the
COLLEGE GIRL

ELLIS STONE & COMPANY

"Greensboro's Best Store"

MANGEL'S

Misses' and Women's
APPAREL

216 S. Elm Street Greensboro, N. C.

We invite you to visit the studios



of
W B I G

In the O. Henry Hotel
GREENSBORO

"The Favorite Station in the Favored Region"

Patronize Our

Advertisers

FOR

Quality

IN

Photography

SIDDELL'S
OFFERS THE BEST

SIDDELL STUDIOS

RALEIGH, N. C.

Official Photographers for
PINE NEEDLES



Achievement



~ACHIEVEMENT IN ANY LINE
OF ENDEAVOR IS THE NATURAL
RESULT OF ABILITY AND
EXPERIENCE, PLUS OPPORTUNITY.
~THIS ORGANIZATION TAKES PRIDE
IN ITS SUCCESS~SUCCESS EARNED
BY THE ABILITY OF ITS MEMBERS,
THE EXPERIENCE GAINED IN
TWENTY YEARS OF EFFORT, AND
THE OPPORTUNITIES OFFERED BY
ITS CLIENTS.

CHARLOTTE ENGRAVING
COMPANY INC.

ARTISTS-PHOTO-ENGRAVERS-DESIGNERS

CHARLOTTE
NORTH
CAROLINA

ESTABLISHED NINETEEN FIFTEEN



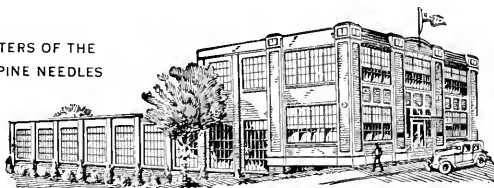
SCHOOL PUBLICATIONS

THE many high awards won each year by school publications produced by us is the result of specialization based on a comprehensive knowledge of art motifs, design, layout and publication trends.

A modern printing plant operated by highly efficient craftsmen in every department provides a quality and a distinctiveness that is unsurpassed.

THE LASSITER PRESS, INC.
QUEEN CITY PRINTING COMPANY
CHARLOTTE, NORTH CAROLINA

PRINTERS OF THE
1937 PINE NEEDLES



A u t o g r a p h s

A u t o g r a p h s

A u t o g r a p h s







